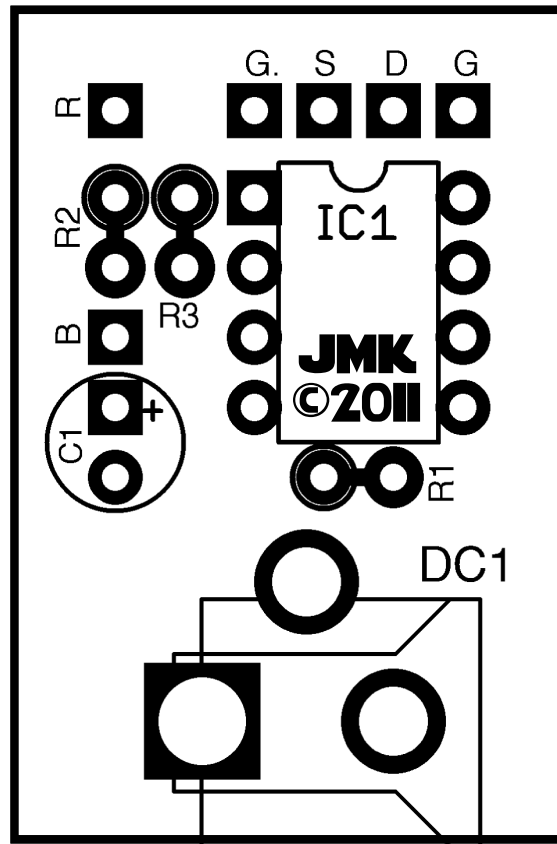
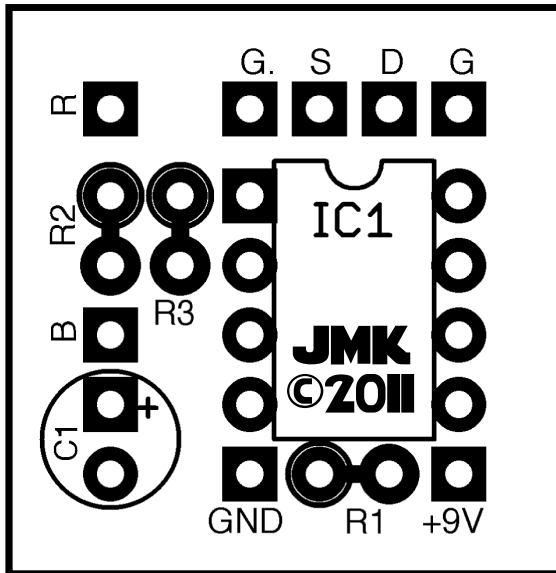


JMK PEDALS PRESENTS...

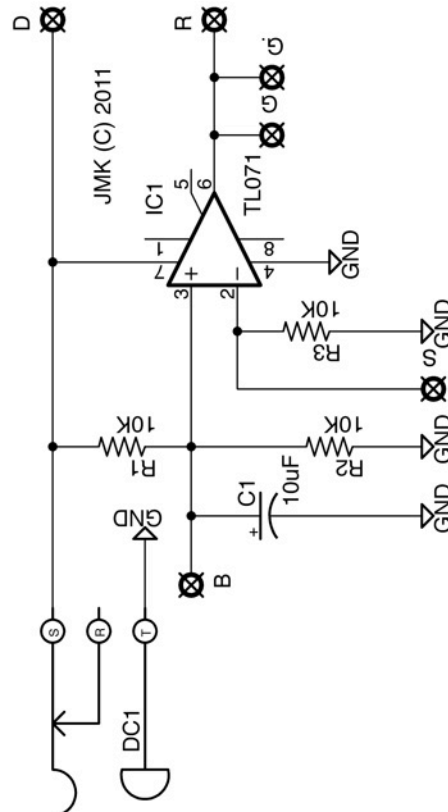
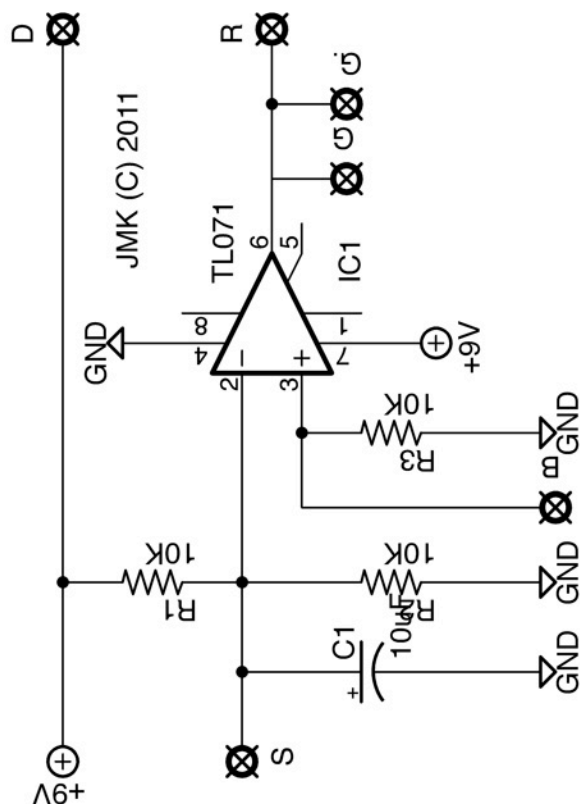
# JFET MATCHER

PCB AND SCHEMATIC ARTWORK (C) 2011 JMK PEDALS

VERSION 1.4: 12/9/11

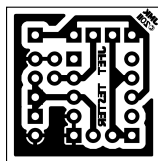


Resistors		Capacitors		ICs	
R1	10K	C1	10uF	IC1	TL071
R2	10K				
R3	10K				

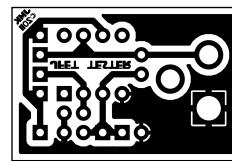


### Notes:

- There are two versions of the same project. One version (left side) is for a normal wired connection for power and ground. The second version (right side) is designed to include a PCB mount DC Jack connection for power and ground.
- The correct part for the Jack version is: <http://www.smallbearelec.com/Detail.bok?no=634>
- We recommend you use a row of SIL sockets for connecting your JFET transistors to the circuit. Notice that you can easily use this matching circuit to connect any pinout of JFET that you might come across. G stands for Gate, D for Drain, S for Source. Check your transistors datasheet for pinouts.
- Connections marked as B (black) and R (red) on the schematic and layout are for a multimeter. Set the multimeter to DC Voltage, and measure your reading for each JFET as you plug it into the socket. Match up the JFETs according to this reading. You JFETs should measure in the - Vgs range.



PCB Measurements:  
.8" Tall x .825" wide



PCB Measurements:  
.8" Tall x 1.2" wide

### Parts:

- 1/4 watt Axial Film Resistors (Carbon or Metal Film)
- 16V or higher capacitors are recommended.
- Smallbear electronics recommended for purchasing parts (not affiliated with JMK Pedals)

This Document is designed for personal use only! Do not use this to create a product for sale without permission of it's owner: jacobkokura@gmail.com