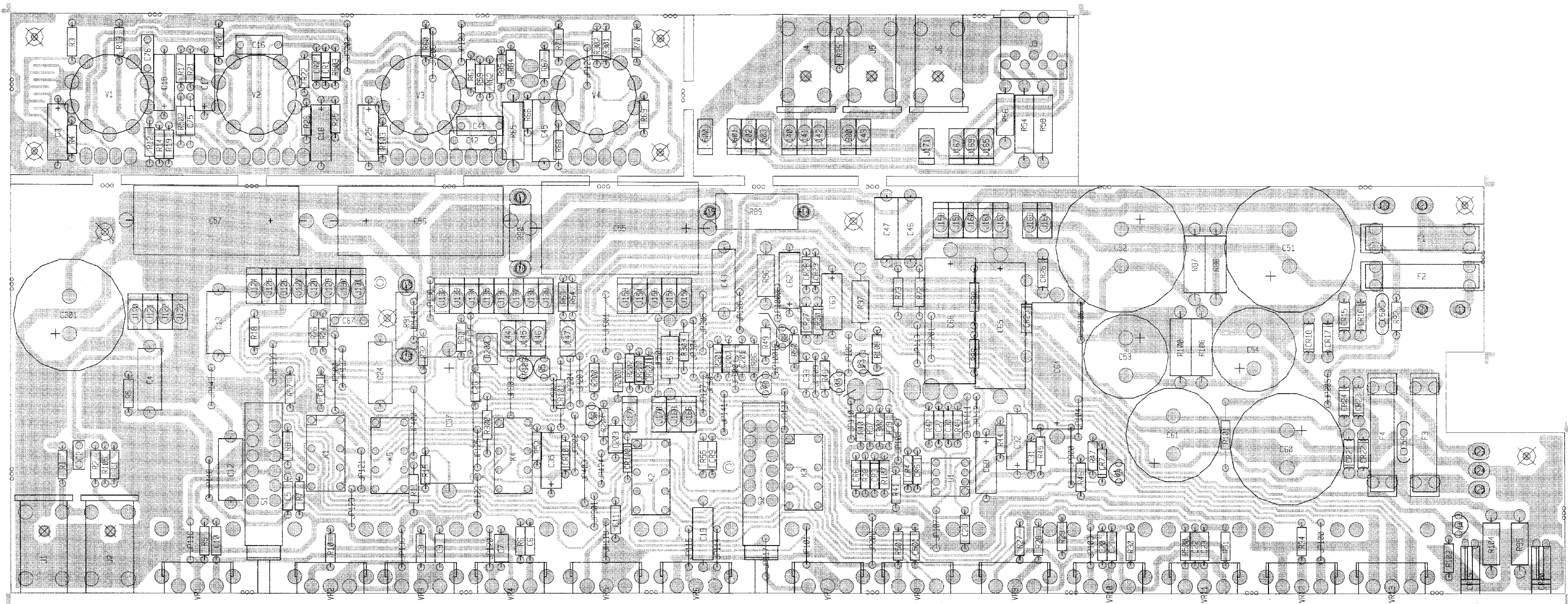


NOTICE: THIS CIRCUITRY IS PROTECTED BY U.S. PATENT NOS. 5,197,102 OWNED BY PEAVEY ELECTRONICS CORP. USE OR COPYING WITHOUT EXPRESS WRITTEN AUTHORITY FROM PEAVEY IS STRICTLY FORBIDDEN AND VIOLATORS WILL BE PROSECUTED TO THE FULLEST EXTENT ALLOWED UNDER U.S. PATENT LAWS.

PEAVEY ELECTRONICS CORP.			
711 A STREET			
MERTOTAN, MISSISSIPPI 39301			
TITLE ULTRA PLUS PREAMP			
SIZE B	CODE	NUMBER 81500107	REV
PRINT DATE	29-APR-97		SHEET 3 OF 3



# Ultra Plus Preamp

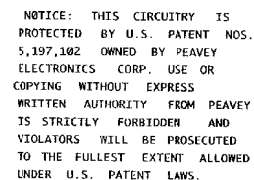
BOARD NAME: ULTRA PLUS PREAMP							
** QTY.	PART NAME	VALUE	PART NUMBER	DESCRIPTION AND DEVICE DESIGNATIONS	*****		
1	39PF	39PF	70340052	39PF-----50VDC---T/C---T&R			
1	.1SF	.1SF	70330113	C1 0.10 MFD 10% 100V STCK FILM T&A			
1	22A25	22A25	70320012	C2 22MFD +/-20% 25VDC EL AXL			
1	.047A400	.047A400	70320105	C3 .047MFD 450 VOLT T&R CAP			
1	.0022	.0022	70340004	C4 .0022MF-10%---50VDC---T/C---T&R			
1	270PF	270PF	70340057	C5 270PF---10%---50VDC---T/C---T&R			
1	.1P10	.1P10	70340101	C6 .1MF---10%---50VDC---MON---T&R			
1	.047	.047	70340017	C7 .047MF---10%---50VDC---MON---T&R			
1	.015	.015	70340010	C8 .015MF---10%---50VDC---T/C---T&R			
2	470PF	470PF	70340058	C9 470PF---10%---50VDC---T/C---T&R			
2	.047A400	.047A400	70320105	C10, C11 .047MFD 450 VOLT T&R CAP			
1	.47A50L	.47A50L	70340063	C12, C13 .47MFD 50V LOW LEAKAGE			
1	.022R400	.022R400	70320106	C15 .022 MFD 400V RADIAL MYLAR			
2	22A25	22A25	70320012	C16 22MFD +/-20% 25VDC EL AXL			
1	.022A400	.022A400	70320283	C17, C18 .022MF-400V-T&R-CAP			
1	.0022	.0022	70340004	C19 .0022MF-10%---50VDC---T/C---T&R			
1	.001	.001	70340000	C20 .001MF---10%---50VDC---MON---T&R			
2	100PF	100PF	70340054	C21 100PF---10%---50VDC---T/C---T&R			
1	.047A400	.047A400	70320105	C22, C23 .047MFD 450 VOLT T&R CAP			
1	22A25	22A25	70320012	C24 22MFD +/-20% 25VDC EL AXL			
1	.0068	.0068	70340008	C25 .0068MF-10%---50VDC---MON---T&R			
2	.047P80	.047P80	70340016	C26 .047MF---80-20%---50VDC---MON---T&R			
2	100PF	100PF	70340054	C27, C28 100PF---10%---50VDC---T/C---T&R			
1	2.2A35	2.2A35	70320200	C29, C30 2.2MFD 35VDC LY. CAP T&R			
1	.058	.068	70340018	C31 .058MF---10%---50VDC---MON---T&R			
1	22A25	22A25	70320012	C32 22MFD +/-20% 25VDC EL AXL			
1	1000A35	1000A35	70320038	C33 1000 MFD 35VDC LYTIC CAP			
2	.022R400	.022R400	70320106	C37 .022 MFD 400V RADIAL MYLAR			
4	.047A400	.047A400	70320105	C41, C42 .047MFD 450 VOLT T&R CAP			
1	.01CD	.01CD	70320248	C43, C45, C46, C47 .01MF---20%---1000VDC---CD-T&A			
2	330V350	330V350	70320169	C50 330 MFD 350 VDC VERT. SNAP-IN			
2	100V350	100V350	70320130	C51, C52 100 MFD 350VDC RADIAL SNAP-IN			
1	47A500	47A500	70320005	C53, C54 47MF 500VDC ELECTROLYTIC -AXIAL			
2	22A450	22A450	70320020	C55 22 MFD 450VDC LYTIC CAP			
1	.01CD	.01CD	70320248	C56, C57 .01MF---20%---1000VDC---CD-T&A			
1	4700R35	4700R35	70350200	C59 4700 MFD 35VDC RADIAL SNAP-IN			
1	2200V35	2200V35	70320113	C60 2200 MFD 35VDC RADIAL LYTIC			
2	22A25	22A25	70320012	C61 22MFD +/-20% 25VDC EL AXL			
3	220A100	220A100	70320017	C62, C63 220 MFD 100VDC LYTIC CAP			
1	.001R630	.001R630	70320160	C64, C65, C66 .001MFD 630VDC B-BOX			
1	22A25	22A25	70320012	C67 22MFD +/-20% 25VDC EL AXL			
1	470PF	470PF	70340058	C68 470PF---10%---50VDC---T/C---T&R			
1	.001R630	.001R630	70320160	C75 .001MFD 630VDC B-BOX			
1	.22M	.22M	70330128	C76 .22M 5% 50Vdc my T&A			
3	.1P10	.1P10	70340101	C200 .1MF---10%---50VDC---MON---T&R			
1	.015	.015	70340010	C201, C202, C203 .015MF---10%---50VDC---T/C---T&R			

1	4700R35	4700R35	70350200	4700 MFD 35VDC RADIAL SNAP-IN	1	1.5K	1.5K	70240018	1.5K-1/4W-5%---CF-T&R
1	.022	.022	70340012	C301 .022MF---10%---50VDC---MON---T&R	1	220K	220K	70240036	R4 220K-1/4W-5%---CF-T&R
10	1N4148	4148	70464148	C501 1N4148 75V 10MA SILICON DIODE	1	68K	68K	70240032	R5 68K-1/4W-5%---CF-T&R
4	1N4007	1N4007	70464007	CR1, CR2, CR3, CR4, CR5, CR6, CR7, CR8, CR9, CR10 1N4007 1KV, 1A, SILICON DIODE	2	220K	220K	70240036	R6 220K-1/4W-5%---CF-T&R
1	RALEDGN2	RALEDGN2	70450578	CR15, CR16, CR17, CR18 SE-8721-D-GN-25MM LDS REC - RIGHT ANGLE	1	2.2M	2.2M	70240040	R7, R8 2.2M-1/4W-5%---CF-T&R
1	RALEDRD2	RALEDRD2	70450577	CR19 SE-8711-D-RD-25MM LDS REC - RIGHT ANGLE	1	10K	10K	70240025	R9 10K-1/4W-5%---CF-T&R
6	1N4003	1N4003	70464003	CR20 1N4003 200V SILICON DIODE	1	2.2M	2.2M	70240040	R10 2.2M-1/4W-5%---CF-T&R
1	30050	30050	70430050	CR21, CR22, CR23, CR24, CR25, CR26 SZP30050 16V 1 WATT 5% ZENER DIODE T&R	1	1M	1M	70240039	R11 1M-1/4W-5%---CF-T&R
2	1N4148	4148	70464148	CR27 1N4148 75V 10MA SILICON DIODE	1	100K	100K	70240034	R12 100K-1/4W-5%---CF-T&R
1	30050	30050	70430050	CR28, CR29 SZP30050 16V 1 WATT 5% ZENER DIODE T&R	1	1.5K	1.5K	70240018	R13 1.5K-1/4W-5%---CF-T&R
2	1N4148	4148	70464148	CR30 1N4148 75V 10MA SILICON DIODE	1	1M	1M	70240039	R14 1M-1/4W-5%---CF-T&R
1	MAC97	MAC97	70460097	CR100, CR101 MAC97-6 400V .6A TO-92 TRIAC T&A	2	470K	470K	70240038	R15 470K-1/4W-5%---CF-T&R
2	1N4148	4148	70464148	CR102 1N4148 75V 10MA SILICON DIODE	1	47K	47K	70240031	R17, R18 47K-1/4W-5%---CF-T&R
1	10AFB	10AFB	70900370	CR200, CR201 10 AMP F/B FUSE WITH 2 FUSECLIPS #709000816	1	150K	150K	70240035	R19 150K-1/4W-5%---CF-T&R
1	2AFB	2AFB	70900133	F1 AGC 2 AMP FUSE	1	1.5K	1.5K	70240018	R20 1.5K-1/4W-5%---CF-T&R
2	1AFB	1AFB	70900085	F2 AGC 1 AMP FUSE with 2 fuseclips #709000816	1	680K	680K	70240065	R21 680K-1/4W-5%---CF-T&R
2	RAMN6164	71466164	71466164	F3, F4 JK R/A 12.5MM NIN MONO -88	1	1M	1M	70240039	R22 1M-1/4W-5%---CF-T&R
1	DIN7RA	71466226	71466226	J1, J2 CONN 7P R/A PCMTNT DIN W/ 4 MNT. HOLES	1	100K	100K	70240034	R23 100K-1/4W-5%---CF-T&R
3	RAMN6164	71466164	71466164	J3 JK R/A 12.5MM NIN MONO -88	1	1.5K	1.5K	70240018	R24 1.5K-1/4W-5%---CF-T&R
2	SPX1D	SPX1D	73717003	J4, J5, J6 1 STAKE PIN	1	47K	47K	70240031	R25 47K-1/4W-5%---CF-T&R
4	MMPD	73711812	73711812	J7, J8 R93-12 PN C.B. MALE MOLEX PIN	1	10K	10K	70240025	R26 10K-1/4W-5%---CF-T&R
9	MMPU	73711812	73711812	J9, J10, J11, J12 R93-12 PN C.B. MALE MOLEX PIN	1	100K	100K	70240034	R27 100K-1/4W-5%---CF-T&R
2	FMPU	73711811	73711811	J13, J14, J15, J16, J17, J18, J19, J20, J21 M118-171 C.B. FEMALE MOLEX PIN	1	150K	150K	70240035	R28 150K-1/4W-5%---CF-T&R
1	MMPU	73711812	73711812	J22, J23 R93-12 PN C.B. MALE MOLEX PIN	1	220K	220K	70240036	R29 220K-1/4W-5%---CF-T&R
1	FMPU	73711811	73711811	J24 M118-171 C.B. FEMALE MOLEX PIN	1	240K	240K	70241094	R30 240K-1/4W-5%---CF-T&R
20	SPX1D	SPX1D	73717003	J25 1 STAKE PIN	3	100K	100K	70240034	R31 100K-1/4W-5%---CF-T&R
28	SPX1U	SPX1U	73717003	J100, J101, J102, J103, J104, J105, J106, J107, J108, J109, J110, J111, J112, J113, J114, J115, J116, J117, J118, J119 1 STAKE PIN	1	10K	10K	70240025	R32, R33, R34 10K-1/4W-5%---CF-T&R
				J120, J121, J122, J123, J124, J125, J126, J127, J128, J129, J130, J131, J132, J133, J134, J135, J136, J137, J138, J139, J140, J141, J142, J143, J144, J145, J146, J147 1 STAKE PIN	1	220K	220K	70240036	R35 220K-1/4W-5%---CF-T&R
				J148, J149, J150, J151, J152 1 STAKE PIN	1	10	10	70240003	R36 10-1/4W-5%---CF-T&R
				J153, J154, J155, J156, J157, J158, J159, J160, J161, J162, J163, J164, J165, J166, J167, J168, J169, J170, J171, J172, J200, J201, J300, J500, J501, J502, J503 DPDT OMRON RELAY 12VDC	1	4.7K	4.7K	70240023	R37 4.7K-1/4W-5%---CF-T&R
5	12VRELAY	71322277	71322277	K1, K2, K3, K4, K5 SPACER, 1/8,R(#4),.187 SWAGE ALUM.	1	10	10	70240003	R38 10-1/4W-5%---CF-T&R
4	125SOWD	70900788	70900788	M10, M11, M12, M13 2N5951-3586-J231 40V N-CHANNEL PET T&A	1	100K	100K	70240034	R39 100K-1/4W-5%---CF-T&R
1	J231	J231	70460231	Q1 MPS-6531 TO92 NPN TRANS.	1	270	270	70240013	R40 270-1/4W-5%---CF-T&R
1	6530	6531	70466531	Q2 MPS-6533/34 TO-92 PNP TRANS T&A	1	22K	22K	70240029	R41 22K-1/4W-5%---CF-T&R
1	6533	6534	70466533	Q3 SKA-3919 TO92 NPN TRANS T&A	1	10K	10K	70240025	R42 10K-1/4W-5%---CF-T&R
1	2N3919	3919	70463919	Q4 J-174 30V TO-92 P-CHAN FET T&A	1	2.2M	2.2M	70240040	R43 2.2M-1/4W-5%---CF-T&R
1	J174	J174	70460174	Q5 J-111 35V TO-92 NFET LOW T&A	1	10K	10K	70240025	R44 10K-1/4W-5%---CF-T&R
1	J111	J111	70460111	Q6 J-174 30V TO-92 P-CHAN FET T&A	1	4.7K	4.7K	70240023	R45 4.7K-1/4W-5%---CF-T&R
1	J174	J174	70460174	Q7 MPS-6531 TO92 NPN TRANS.	1	100W1	100W1	70210003	R46 100-1W-5%---MO-T&R
1	6530	6531	70466531	Q8 22K-1/4W-5%---CF-T&R	1	330W2R	330W2R	70250074	R47 330-RSS2W-5%---MO-AXL
2	22K	22K	70240029	R1, R2 150K-1/4W-5%---CF-T&R	1	100	100	70240010	R48 100-1/4W-5%---CF-T&R
1	150K	150K	70240035	R3 150K-1/4W-5%---CF-T&R	1	1.5KW1	1.5KW1	70210007	R49 1.5KW-1W-5%---MO-T&R
					1	100	100	70240010	R50 100-1/4W-5%---CF-T&R

1	330W2R	330W2R	70250074	330-RSS2W-5%-MO-AXL R58
1	470K	470K	70240038	470K-1/4W-5%-CF-T&R R59
1	100K	100K	70240034	100K-1/4W-5%-CF-T&R R60
1	1.5K	1.5K	70240018	1.5K-1/4W-5%-CF-T&R R61
1	1M	1M	70240039	1M-1/4W-5%-CF-T&R R62
1	10K	10K	70240025	10K-1/4W-5%-CF-T&R R63
1	1K	1K	70240017	1K-1/4W-5%-CF-T&R R64
1	22KW1	22KW1	70210005	22K-1W-5%-MO-T&R R65
1	470K	470K	70240038	470K-1/4W-5%-CF-T&R R66
1	470	470	70240015	470-1/4W-5%-CF-T&R R67
1	68K	68K	70240032	68K-1/4W-5%-CF-T&R R68
1	100K	100K	70240034	100K-1/4W-5%-CF-T&R R69
2	68K	68K	70240032	68K-1/4W-5%-CF-T&R R70, R71
2	220K	220K	70240036	220K-1/4W-5%-CF-T&R R72, R73
1	68K	68K	70240032	68K-1/4W-5%-CF-T&R R84
1	4.7K	4.7K	70240023	4.7K-1/4W-5%-CF-T&R R85
2	220KW1	220KW1	70210008	220K-1W-5%-MO-T&R R86, R87
1	4KW5	4KW5	70250050	4K-5W-10%-WW-AXL R89
2	22KW1	22KW1	70210005	22K-1W-5%-MO-T&R R90, R91
1	4.7K	4.7K	70240023	4.7K-1/4W-5%-CF-T&R R92
1	1.5KW1	1.5KW1	70210007	1.5K-1W-5%-MO-T&R R95
2	220W1	220W1	70210019	220-1W-5%-MO-T&R R96, R97
1	470	470	70240015	470-1/4W-5%-CF-T&R R98
1	47K	47K	70240031	47K-1/4W-5%-CF-T&R R99
1	220KW1	220KW1	70210003	220K-1W-5%-MO-T&R R100
1	2.2M	2.2M	70240040	2.2M-1/4W-5%-CF-T&R R101
1	4.7K	4.7K	70240023	4.7K-1/4W-5%-CF-T&R R102
1	1.5K	1.5K	70240013	1.5K-1/4W-5%-CF-T&R R103
1	1.5KW1	1.5KW1	70210007	1.5K-1W-5%-MO-T&R R104
1	470K	470K	70240033	470K-1/4W-5%-CF-T&R R105
1	220KW1	220KW1	70210003	220K-1W-5%-MO-T&R R106
2	4.7K	4.7K	70240023	4.7K-1/4W-5%-CF-T&R R107, R108
1	1M	1M	70240039	1M-1/4W-5%-CF-T&R R200
1	47	47	70240003	47-1/4W-5%-CF-T&R R201
2	100K	100K	70240034	100K-1/4W-5%-CF-T&R R202, R203
1	1K	1K	70240017	1K-1/4W-5%-CF-T&R R204
1	100K	100K	70240034	100K-1/4W-5%-CF-T&R R300
2	22FP	22FP	70240100	22FP-1/4W-5%-FP- R301, R302
1	330	330	70240014	330-1/4W-5%-CF-T&R R303
1	10K	10K	70240025	10K-1/4W-5%-CF-T&R R500
1	22K	22K	70240029	22K-1/4W-5%-CF-T&R R501
1	470K	470K	70240038	470K-1/4W-5%-CF-T&R R502
1	1M	1M	70240039	1M-1/4W-5%-CF-T&R R503
2	DRASW	DRASW	71322256	PC MNT SWITCH DUAL S1, S2
5	375SCW	70900295	70900295	SPACER, 3/8,R(#4),.187 SWAGE ALUM. SO1, SO2, SO3, SO4, SO5
1	4558	4558	70404558	IC RC-4558, P DUAL BI-PKG 10 U1
4	12AX7	12AX7	70806612	12AX7 VACUUM TUBE W/9 PIN PC MNT SOCKET V1, V2, V3, V4
1	1MAVBP5	71190522	71190522	1 MEG AUD MIN VPC 5% TAPER W/BRKT VR1

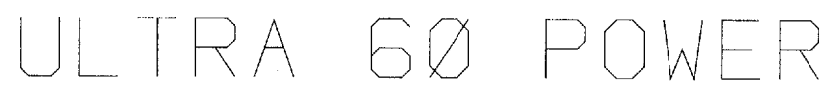
1	250KAVB	71190514	71190514	250K AUD MIN VPC W/BACKET VR2
1	50KBVB	71190511	71190511	50K LIN MIN VPC W/BACKET VR3
1	250KBVB	71190515	71190515	250K LIN MIN VPC W/BACKET VR4
1	50KAVB	71190512	71190512	50K AUD MIN VPC W/BACKET VR5
1	100KBVB	71190517	71190517	100K LIN MIN VPC W/BACKET VR6
1	1MAVBP5	71190522	71190522	1 MEG AUD MIN VPC 5% TAPER W/BRKT VR7
1	100KBVB	71190517	71190517	100K LIN MIN VPC W/BACKET VR8
3	250KBVB	71190515	71190515	250K LIN MIN VPC W/BACKET VR9, VR10, VR11
1	10KBVB	71190510	71190510	10K LIN MIN VPC W/BACKET VR12
1	250KBVB	71190515	71190515	250K LIN MIN VPC W/BACKET VR13

\*\*\*\*\*



M6

COPYRIGHT 1996 PEAVEY ELECTRONICS CORP. PRINTED IN U.S.A.



# ULTRA 60 POWER



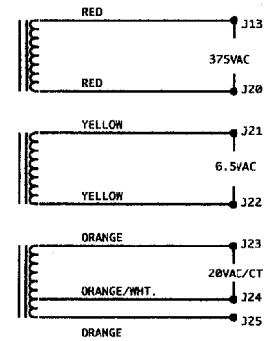
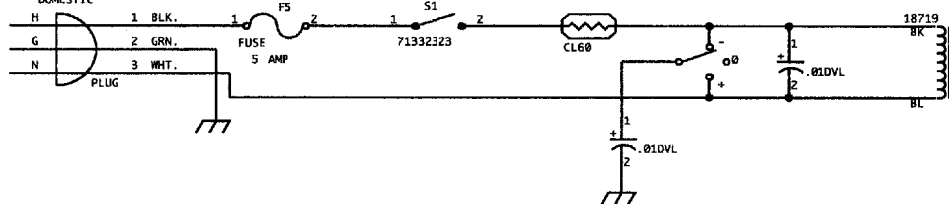
## BOARD NAME: ULTRA+PWR

\*\*\*\*\*  
 \*\* QTY. NAME PART VALUE NUMBER DESCRIPTION AND  
 \*\* QTY. NAME PART VALUE NUMBER DEVICE DESIGNATIONS  
 \*\*\*\*\*

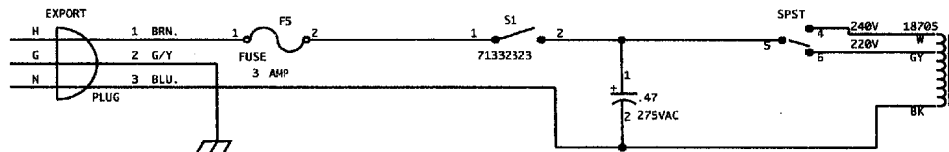
1	.0047	.0047	70340007	.0047M-10%-50VDC-MON-T&R C10
1	22A25	22A25	70320012	22MFD +/-20% 25VDC EL AXL C11
2	100PF	100PF	70340054	100PF-10%-50VDC-T/C-T&R C48, C49
1	100A25	100A25	70320014	100 MFD 25VDC LYTTC CAP C58
2	1N4003	1N4003	70464003	1N4003 200V SILICON DIODE CR11, CR12
2	SR2873	SR2873	70402873	SR2873 2KV, 250MA SILICON DIODE CR13, CR14
5	MMPD	73711812	73711812	R93-12 PN C.B. MALE MOLEX PIN J26, J28, J30, J50, J51
7	SPX1D	SPX1D	73717003	1 STRAKE PIN J100, J101, J102, J103, J104, J105, J106
2	MMPD	73711812	73711812	R93-12 PN C.B. MALE MOLEX PIN J200, J201
1	HIDMNI	71466214	71466214	2 TIP HHD JACK NINS W/SPD J202
1	MMPD	73711812	73711812	R93-12 PN C.B. MALE MOLEX PIN J203
1	SPX1D	SPX1D	73717003	1 STRAKE PIN J204
1	MMPD	73711812	73711812	R93-12 PN C.B. MALE MOLEX PIN J205
1	HIDMNI	71466214	71466214	2 TIP HHD JACK NINS W/SPD J206
1	SPX1D	SPX1D	73717003	1 STRAKE PIN J207
4	MMPD	73711812	73711812	R93-12 PN C.B. MALE MOLEX PIN J208, J209, J210, J211
2	SPX1D	SPX1D	73717003	1 STRAKE PIN J213, J214
1	82K	82K	70240033	82K-1/4W-5%-CF-T&R R10
1	330K	330K	70240037	330K-1/4W-5%-CF-T&R R11
2	22K	22K	70240029	22K-1/4W-5%-CF-T&R R74, R75
2	10K	10K	70240025	10K-1/4W-5%-CF-T&R R76, R80
2	100W1	100W1	70210003	100-1W-5%-MO-T&R R93, R94
1	400W10FP	400W10FP	70250019	400-10W-10%-FP-AXL R100
1	SW2368	71322368	71322368	SPTT TOGGLE SWITCH S3
1	SW2328	SW2328	71322328	2PTT PC MOUNT SLIDE SWITCH S4
2	6L6GC	6L6GC	70806604	6L6GC VACUUM TUBE W/8 PIN SOCKET V5, V6

\*\*\*\*\*

120VAC/60HZ  
DOMESTIC

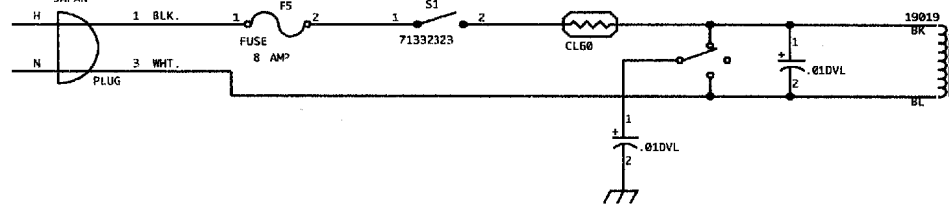


220-230/240VAC/50/60HZ



AC/SECONDARY  
SAME AS ABOVE

100VAC  
JAPAN



AC/SECONDARY  
SAME AS ABOVE

PEAVEY ELECTRONICS CORP.			
711 A STREET			
MERIDIAN, MISSISSIPPI 39301			
TITLE			
ULTRA PLUS/AC			
PRIMARY & SECONDARY WIRING			
SIZE	CODE	NUMBER	REV
B			
PRINT		#81500059	
DATE	10-APR-96		SHEET 1 OF 1