

# Smooth 50

Sheet: PREAMP



File: Preamp.sch

PAGE 1

Sheet: FX LOOP



File: Fxloop.sch

Sheet: POWER AMP



File: Power.sch

PAGE 2

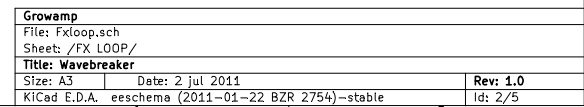
Sheet: POWER SUPPLY

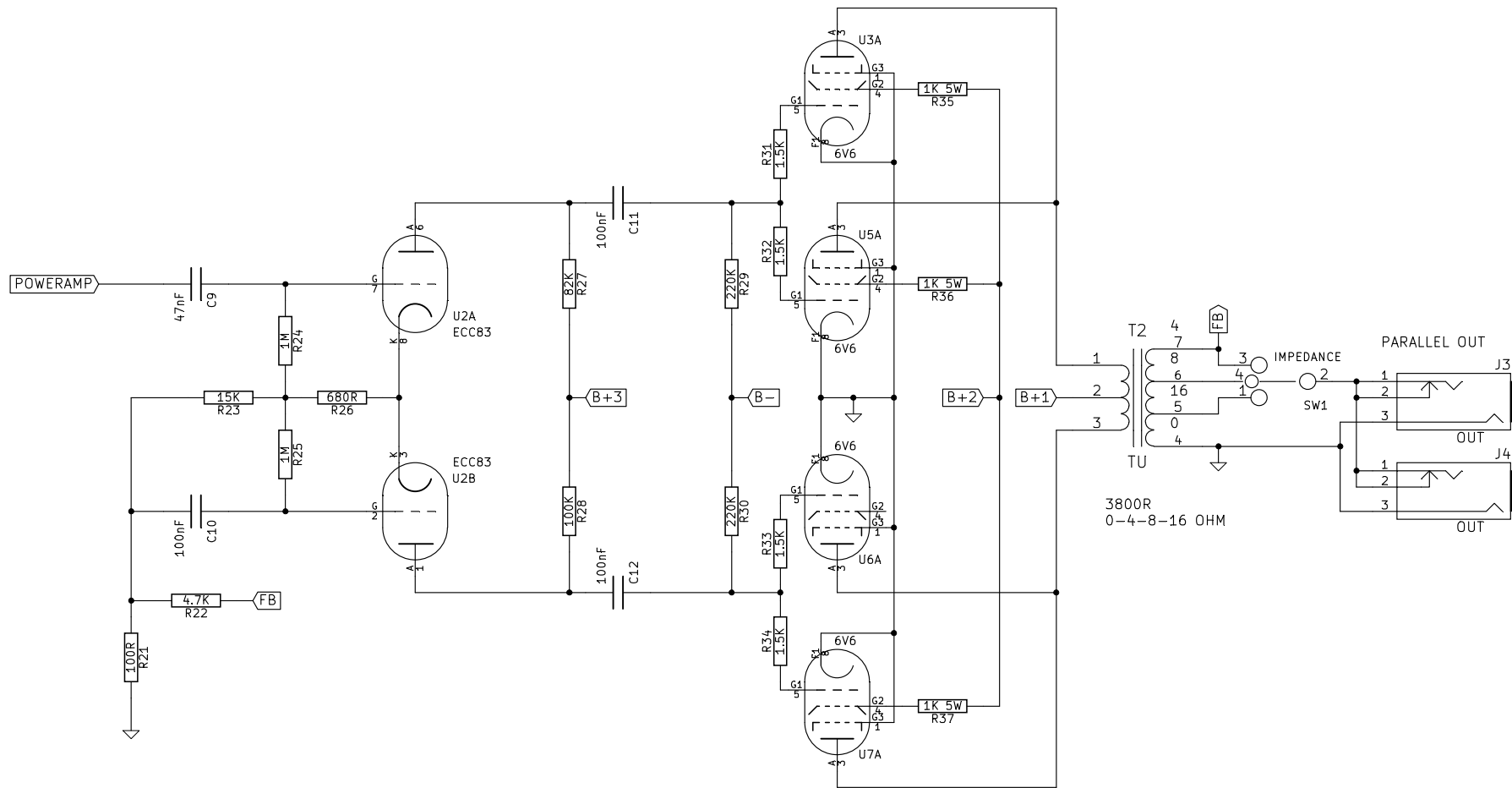


File: Supply.sch

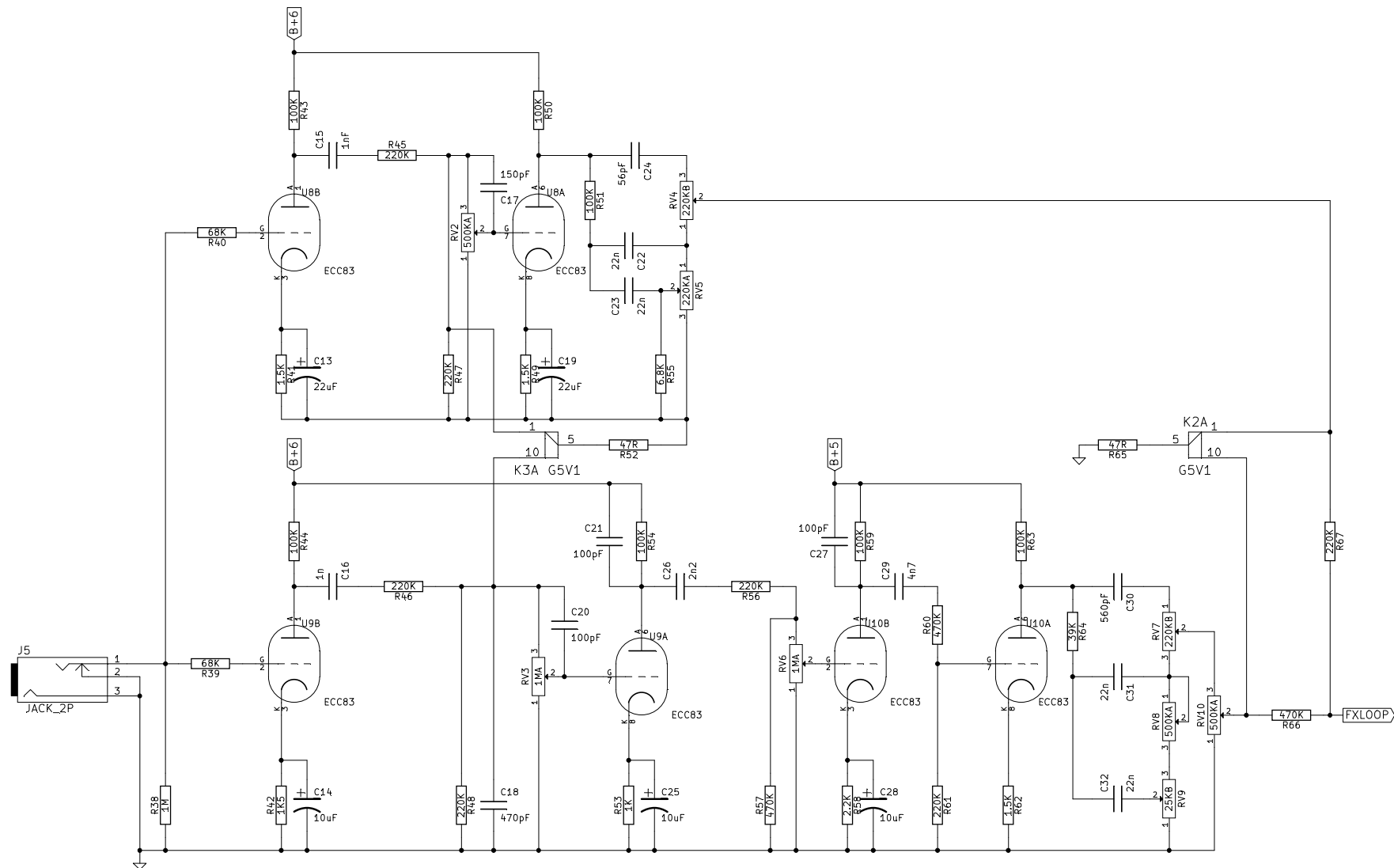
PAGE 3

<b>Growamp</b>		
File: Smooth50.sch		
Sheet: /		
<b>Title: Lead 50</b>		
Size: A4	Date: 2 jul 2011	<b>Rev: 1.0</b>
KiCad E.D.A.	eeschema (2011-01-22 BZR 2754)-stable	Id: 1/5

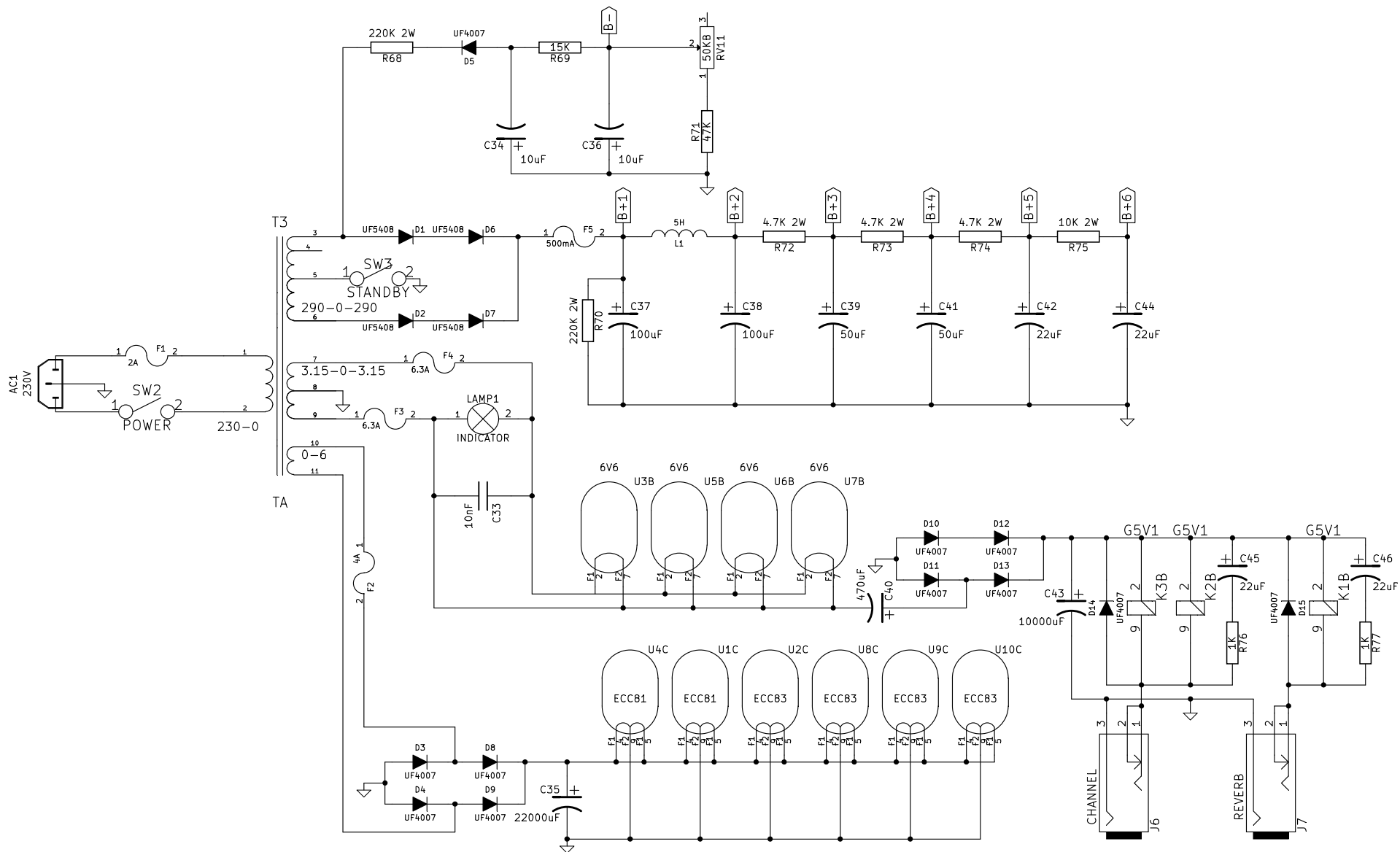




<b>Growamp</b>		
File: Power.sch		
Sheet: /POWER AMP/		
<b>Title: Lead 50</b>		
Size: A4	Date: 2 jul 2011	<b>Rev: 1.0</b>
KiCad E.D.A. eeschema (2011-01-22 BZR 2754)-stable		Id: 3/5



<b>Growamp</b>		
File: Preamp.sch		
Sheet: /PREAMP/		
<b>Title: Lead 50</b>		
Size: User	Date: 2 jul 2011	Rev: 1.0
KiCad E.D.A. eeschema (2011-01-22 BZR 2754)-stable		
Id: 4/5		



<b>Growamp</b>		
File: Supply.sch		
Sheet: /POWER SUPPLY/		
<b>Title: Lead 50</b>		
Size: A4	Date: 2 jul 2011	Rev: 1.0
KiCad E.D.A. eeschema (2011-01-22 BZR 2754)-stable		Id: 5/5