

WARNING! - Please Read this Information Carefully:

The project described in these pages utilizes **POTENTIALLY FATAL HIGH VOLTAGES**. If you are in any way unfamiliar with high voltage circuits or are uncomfortable working around high voltages, **PLEASE DO NOT RISK YOUR LIFE BY BUILDING THEM**. Seek help from a competent technician before building any unfamiliar electronics circuit. While efforts are made to ensure accuracy of these circuits, no guarantee is provided, of any kind!

USE AT YOUR OWN RISK: THE WEBMASTER, PROJECT COORDINATOR, PROJECT CONTRIBUTORS AND WEB SPACE PROVIDER EXPRESSLY DISCLAIM ALL LIABILITY FOR INJURY OR PROPERTY DAMAGE RESULTING FROM THIS INFORMATION! ALL INFORMATION IS PROVIDED 'AS-IS' AND WITHOUT WARRANTY OF ANY KIND.

GENERAL NOTES:

This project is in the **PRELIMINARY STAGES** and is not intended to be built except by **very experienced builders**. These documents have not been extensively debugged, and as such may contain serious errors. Once this project has been officially prototyped and debugged a general release of these documents will be made.

CORE CHASSIS DRILL PLAN:

The chassis drill plan is common to all of the AX84 core series amps. Not all holes are used in all amps. You may want to drill all of them if you plan on upgrading, or modifying the amp in the future.

The chassis hole sizes and locations on these plans are correct for the components used in the construction of the prototype amp. At the current time, not all of the amps have been prototyped, so the size, number, and location are subject to change.

It is the builder's responsibility to insure that the hole sizes, numbers, and locations are correct for the parts used in their own build.

Do not assume that the parts you ordered individually, or bought as a kit, have the same dimensions as those used in the construction of the prototype amp.

CABINET CONSTRUCTION NOTES:

- 1
- THE SPECIFIC TYPE OF CORNER JOINT USED IN THE CABINET CARCASS IS LEFT TO THE BUILDER. AN IMPORTANT POINT TO BEAR IN MIND IS THAT THE INTERIOR CLEARANCE OF THE CABINET IS CRITICAL. THEREFORE THE BUILDER IS ADVISED TO USE A CORNER JOINT THAT DOES NOT REQUIRE ANY SORT OF BRACING, AND THAT DOES NOT REDUCE THE INTERIOR CABINET VOLUME. EXAMPLES OF THIS WOULD BE FINGER JOINTS, DOVETAILS, OR BISQUITS. IN ALL CASES THE WOOD OF THE CABINET SHOULD BE GLUED ON ALL MATING SURFACES.

- 2
- BATTENS ARE ATTACHED TO THE SIDES OF THE CABINET CARCASS WITH WOOD SCREWS AND GLUE. CARE SHOULD BE TAKEN TO ENSURE THAT THE SCREW LOCATIONS DO NOT INTERFERE WITH ANY OF THE REAR PANEL MOUNTING POINTS SHOWN. EXTREME CARE SHOULD BE TAKEN TO ENSURE THAT THE SCREW DOES NOT BREAK THE OUTSIDE SURFACE, NOR COME ANY CLOSER THAN 1/8" TO THE OUTER SURFACE OF THE CABINET CARCASS ESPECIALLY IF THE OUTER SURFACE IS TO BE FINISHED WOOD.

- 3
- THESE DIMENSIONS ARE BASED ON A FACEPLATE THICKNESS OF 1/16". THE BUILDER IS RESPONSIBLE FOR ADJUSTING THESE DIMENSIONS IF THE FACEPLATES ARE THINNER, OR THICKER, THAN 1/16".

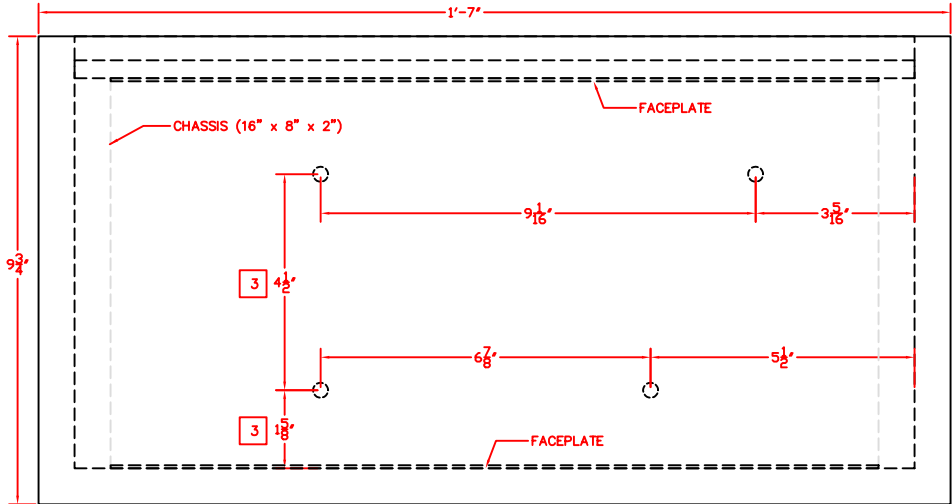
GENERAL CONSTRUCTION NOTES:

- 1
- THIS PLAN HAS NO PROVISIONS FOR EXTERIOR HARDWARE. THE PLACEMENT, AND TYPE OF CABINET HARDWARE SUCH AS CABINET FEET AND HANDLES IS LEFT TO THE BUILDER.

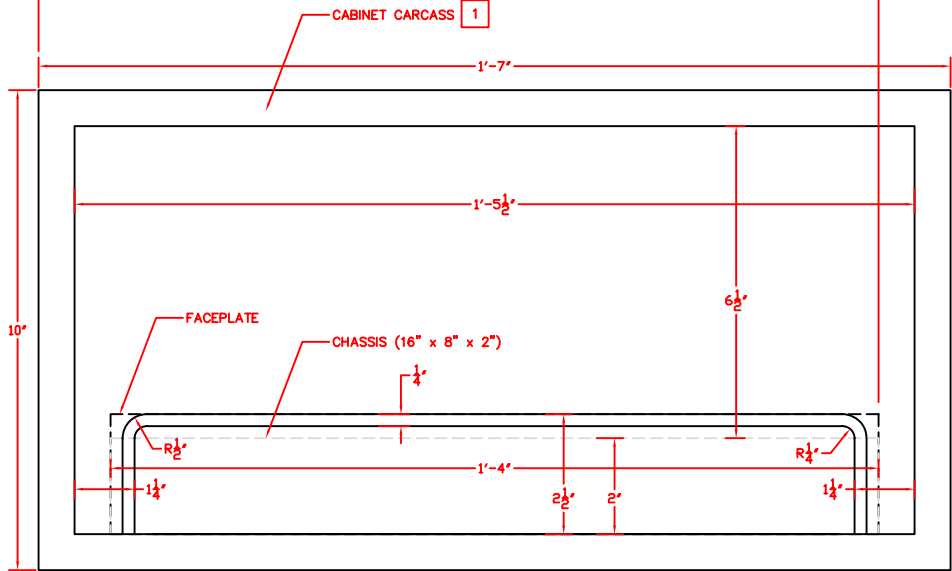
- 2
- EXTERIOR DETAILS SUCH AS CONER ROUNDOVERS, COVERINGS, OR FINISH TYPES ARE LEFT TO THE BUILDER.

- 3
- CABINET CARCASS CONSTRUCTION MATERIALS ARE LEFT UP TO THE BUILDER. SOME TYPE OF COMMON HARDWOOD, SUCH AS OAK, IS RECOMMENDED FOR THE BATTENS AS THEY ARE SUBJECTED TO STRAIN AND/OR MAY BE CONSIDERABLY WEAKENED BY THE HOLES THAT ARE TO BE DRILLED. THE USE OF VOID-FREE, CABINET GRADE PLYWOOD IS RECOMMENDED FOR THE SPEAKER BAFTEL AS WELL AS THE REAR CABINET PANELS AND THE GRILLE FRAME.

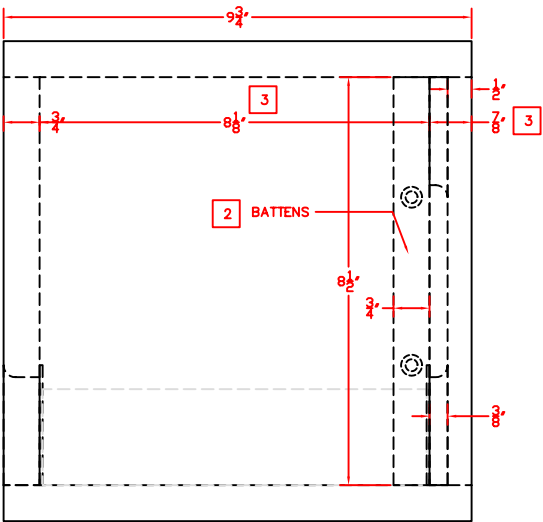
- 4
- BE SURE TO SIZE THE HOLES IN THE BATTENS PROPERLY FOR THE TYPE OF FASTENER, SUCH AS A T-NUT, THAT WILL BE USED TO SECURE THE REAR PANEL. FAILURE TO CORRECTLY SIZE THE FASTENER HOLE IS LIKELY TO CAUSE THE BATTEN TO SPLIT. THE FASTENER, SUCH AS A T-NUT, SHOULD BE MOUNTED TO THE BATTEN PRIOR TO GLUEING AND SCREWING THE BATTEN TO THE CABINET CARCASS.



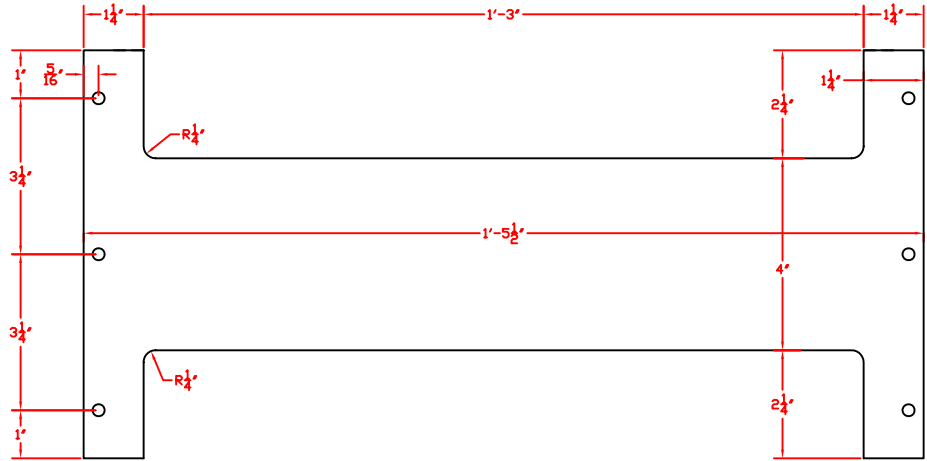
Head Cabinet Top



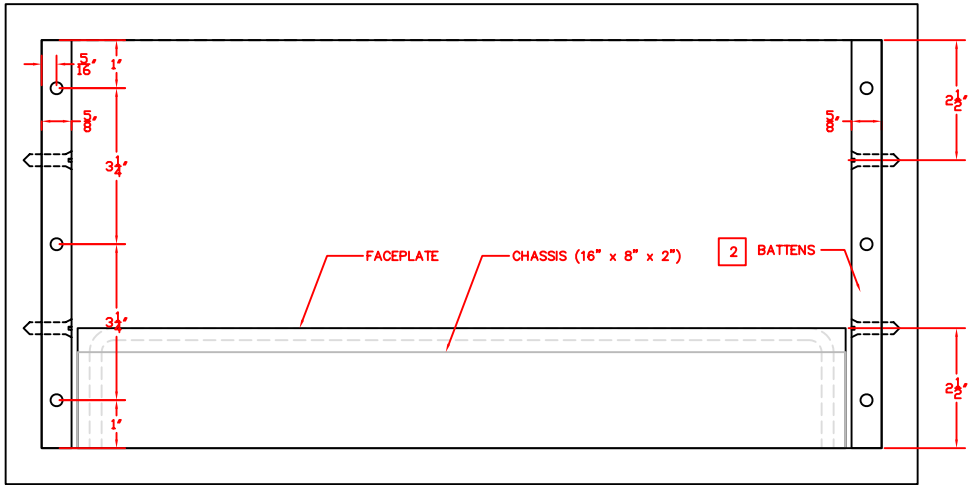
Head Cabinet Front



Head Cabinet Side



Rear Panel



Head Cabinet Back

Revision	Description
07.06.15	Issued For Construction