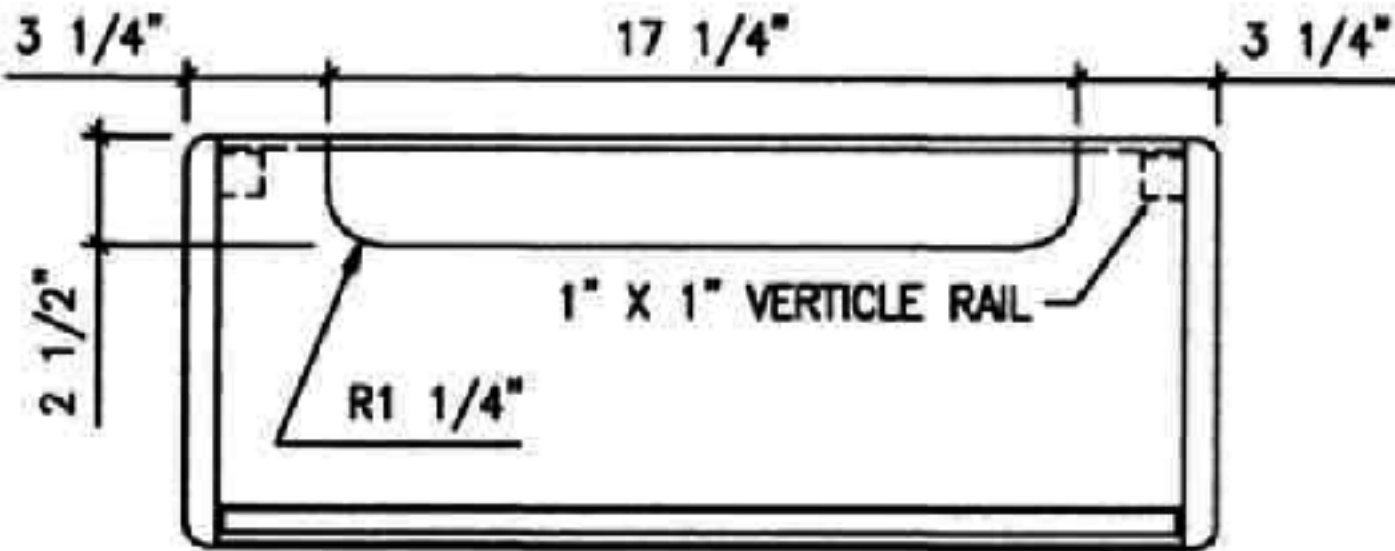
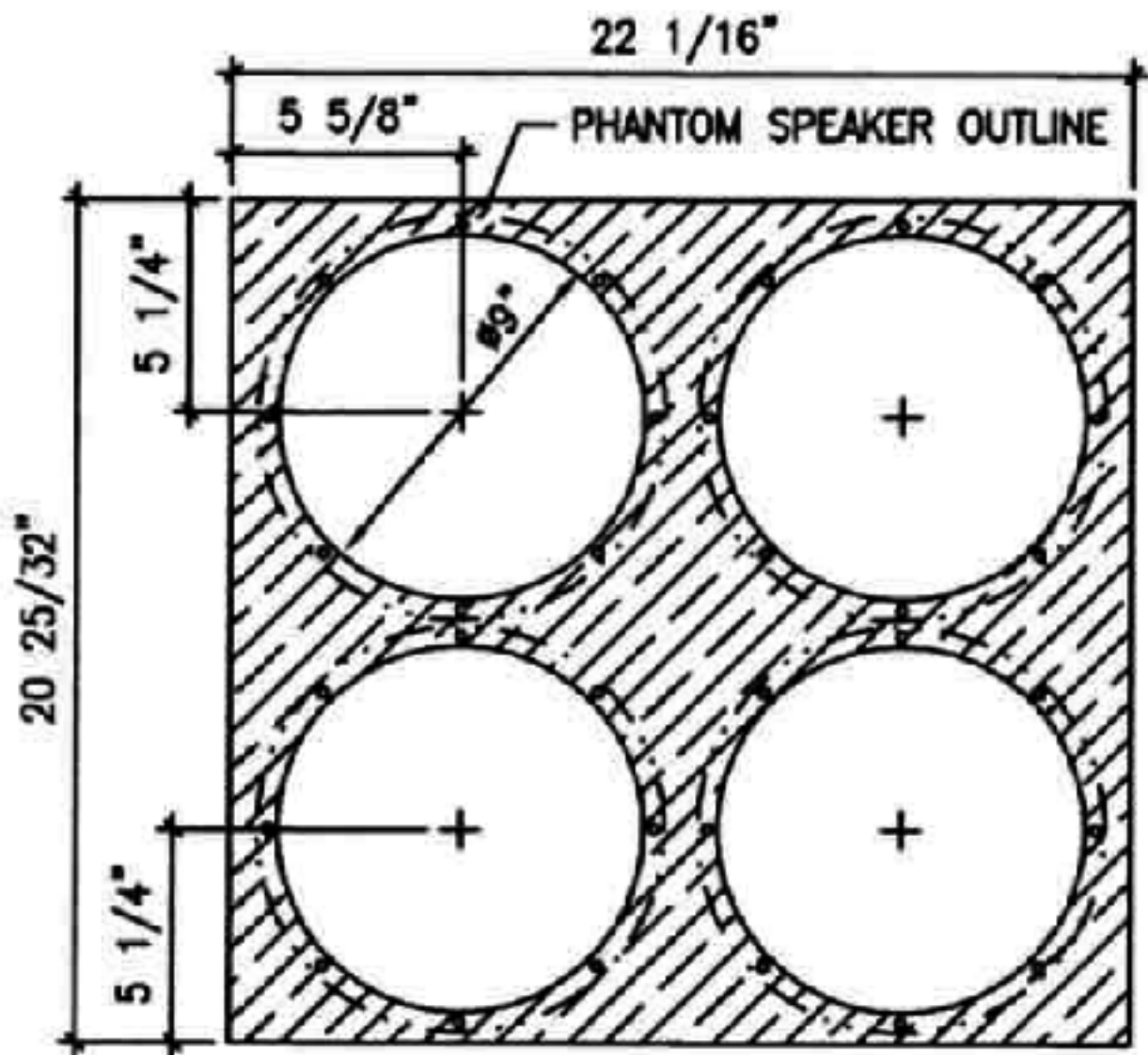


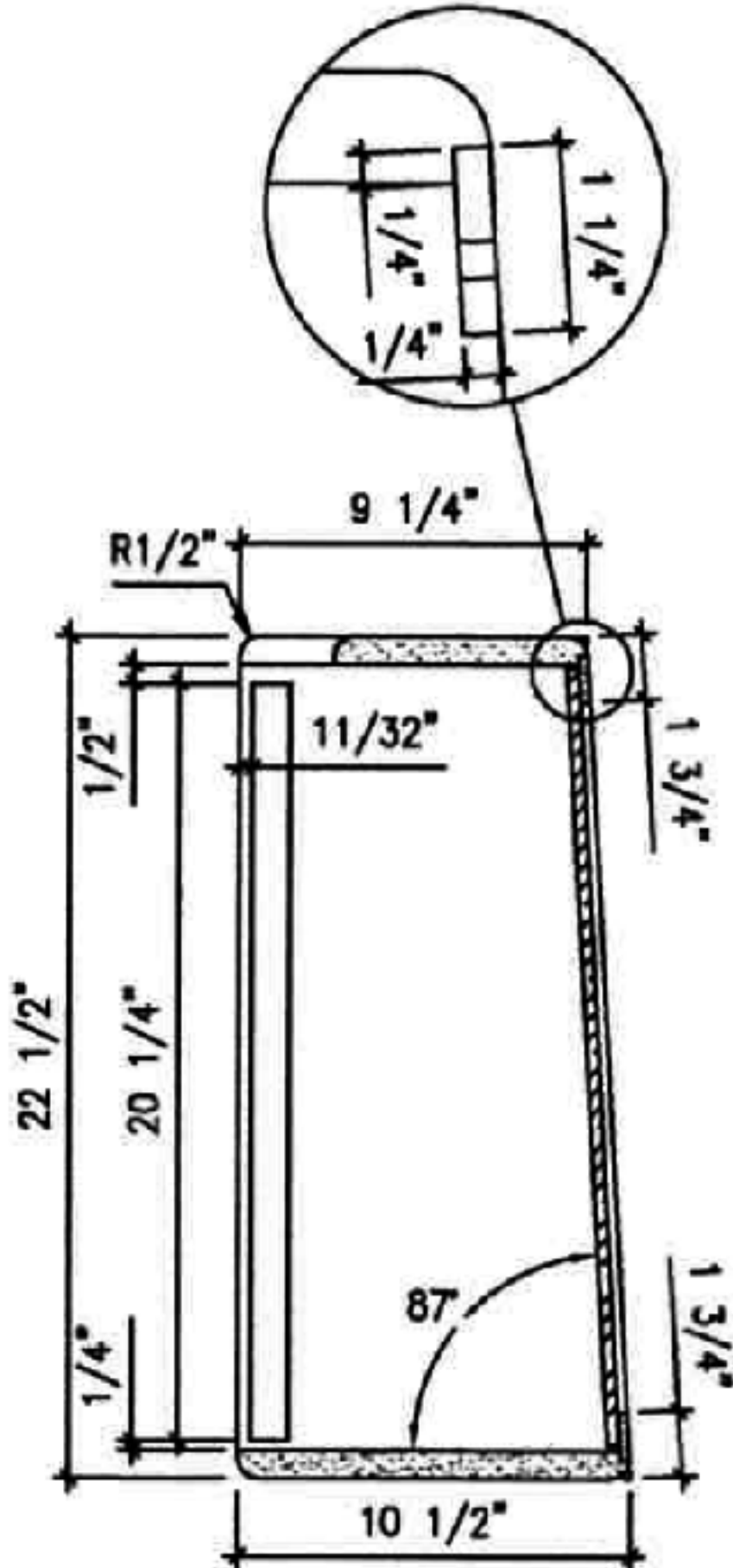
NOTE: 3/32" GAPS HAVE BEEN DEDUCTED FROM BACK PANEL AND BAFFLE DIMS TO ALLOW FOR TWEED AND GRILL CLOTH.



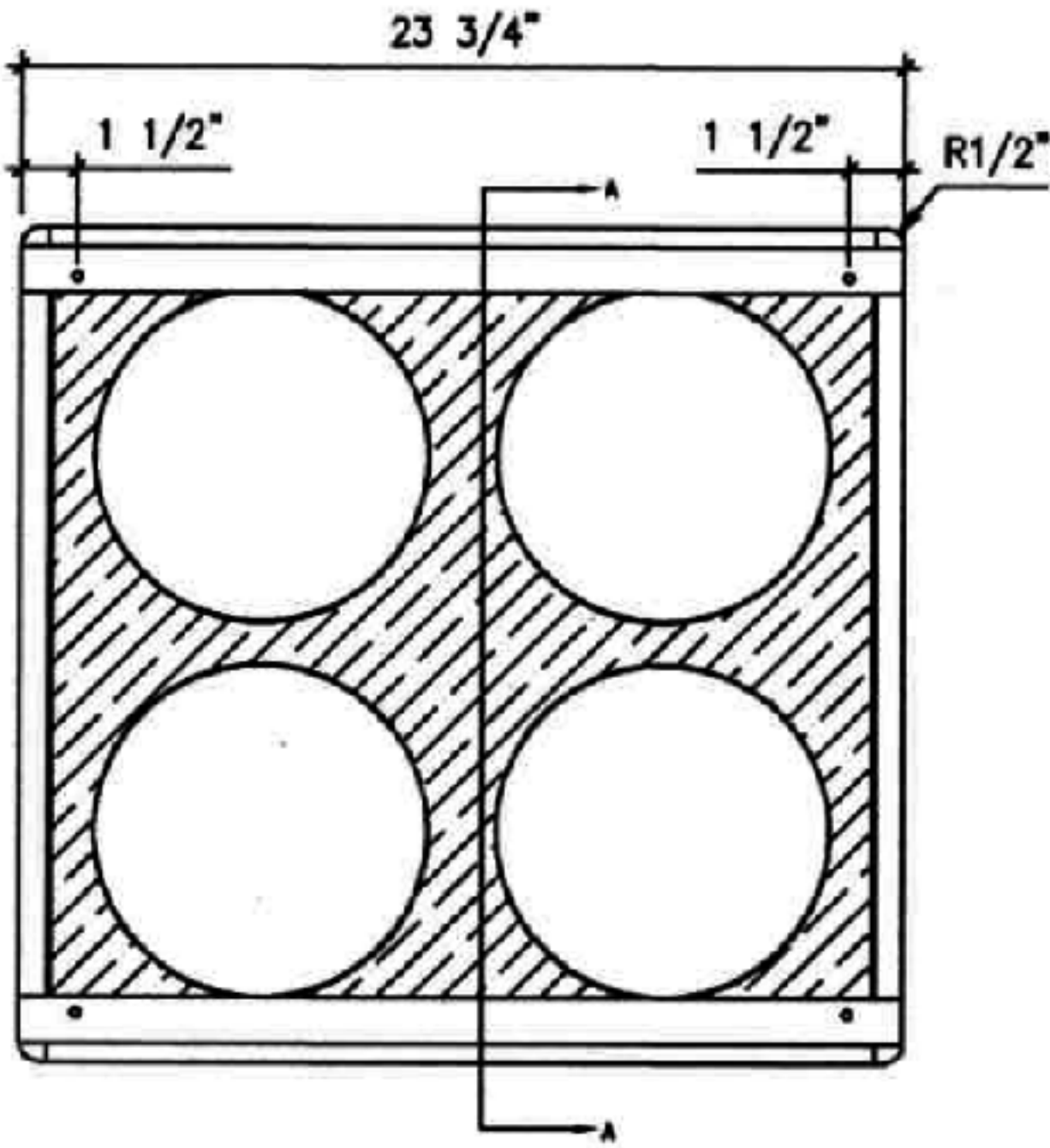
TOP VIEW



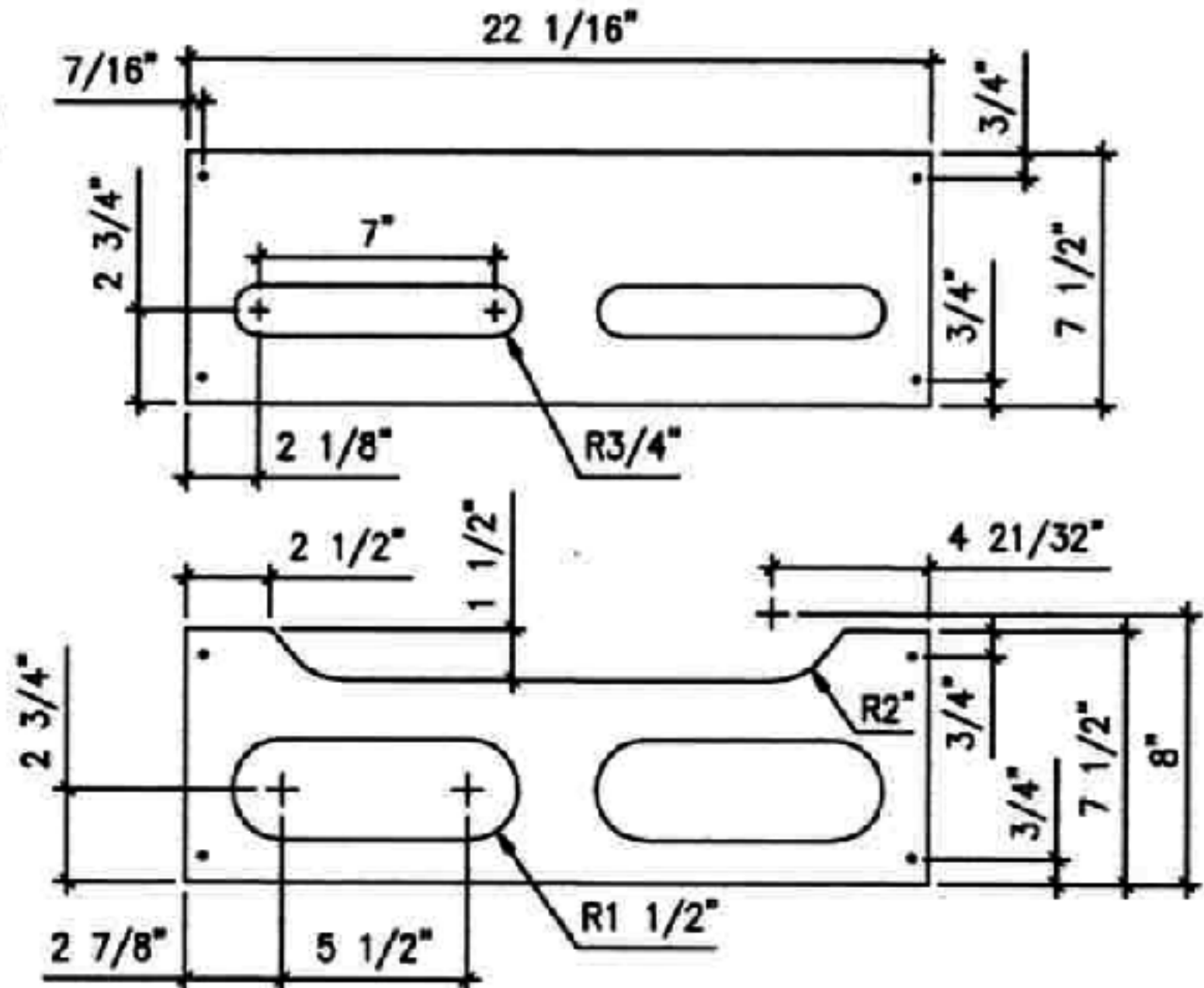
SPEAKER BAFFLE DETAIL



SIDE VIEW (SECTION A-A)



FRONT VIEW



MATERIAL

- 3/4" SOLID PINE
- 1/4" SOLID PINE - FRONT "NARROW" PANELS
- 1/4" PLYWOOD - REAR PANELS
- 5/16" PLYWOOD (OR EQUIVALENT) - SPEAKER BAFFLE

<i>Duel-tone Amps</i>		
CALGARY ALBERTA		WWW.DUEL-TONEAMPS.COM
"BASSMAN" CABINET (5F6-A)		
DRAWING NO. 1 OF 1		
DRAWN BY	DATE DRAWN	REV
JOE ROGERS	APRIL 22, 2004	