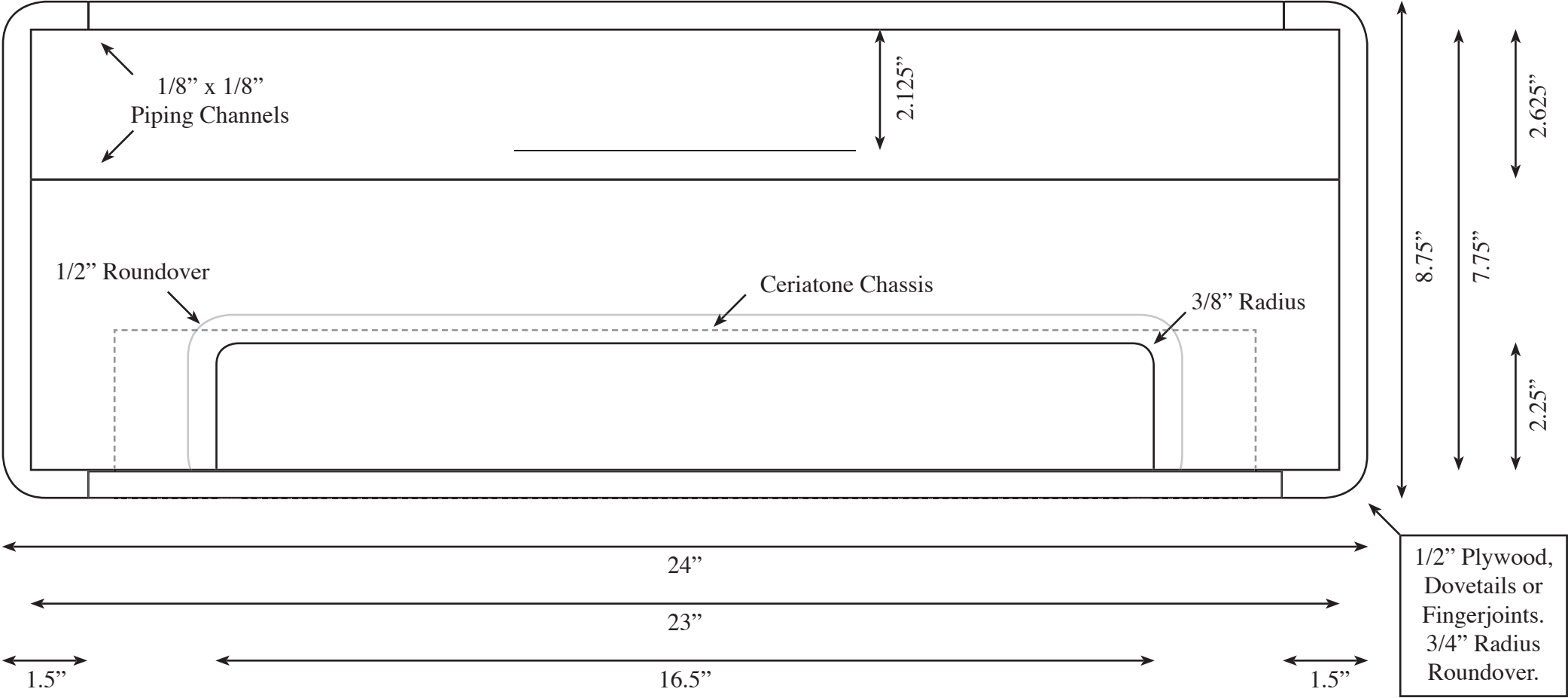
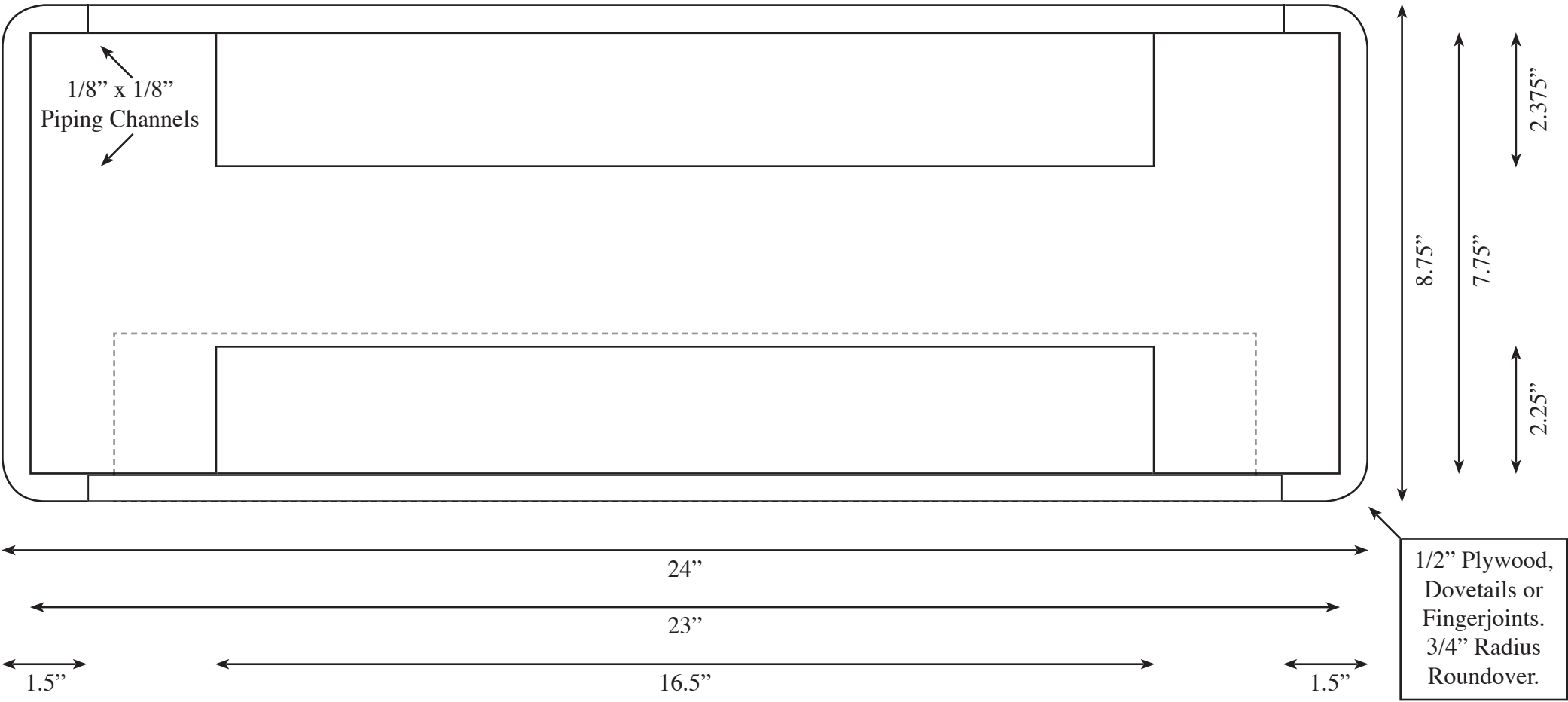


MARSHALL 18 WATT HEAD PLANS - FRONT VIEW



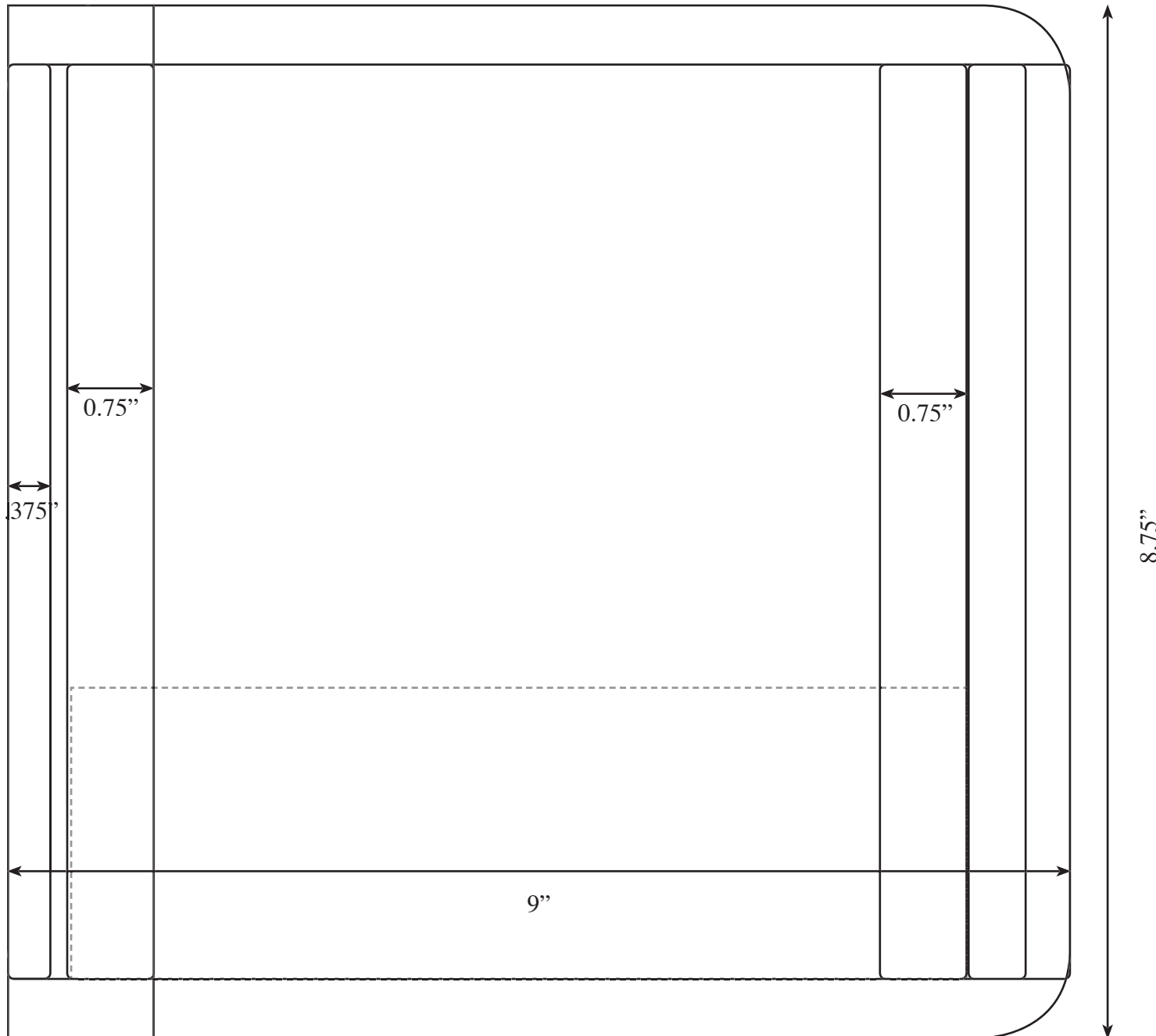
Dimensions gathered from Mark Swanson and the helpful members of 18watt.com.
Rough plan drawn up by Rohan Mansley.

MARSHALL 18 WATT HEAD PLANS - REAR VIEW



Dimensions gathered from Mark Swanson and the helpful members of 18watt.com.
Rough plan drawn up by Rohan Mansley.

MARSHALL 18 WATT HEAD PLANS - SIDE VIEW



The standard clearance from the front of the control panel is $\frac{7}{8}$ inch. $\frac{1}{2}$ is filled up by the front panel and the rest is to keep the control knobs, switches and logo from being hit, bent, broken, etc...

The back is $\frac{3}{8}$ for the back panel + $\frac{1}{8}$ gap between the back panel and the chassis so air can draft up past the rear control panel and out the vent or vents.

Dimensions gathered from Mark Swanson and the helpful members of 18watt.com.
Rough plan drawn up by Rohan Mansley.