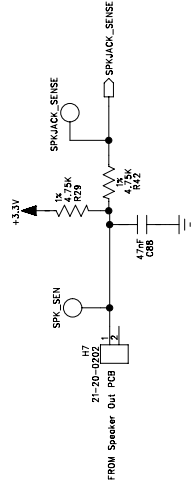
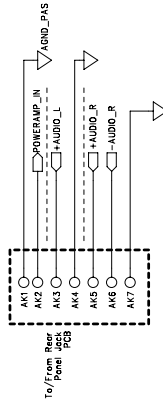
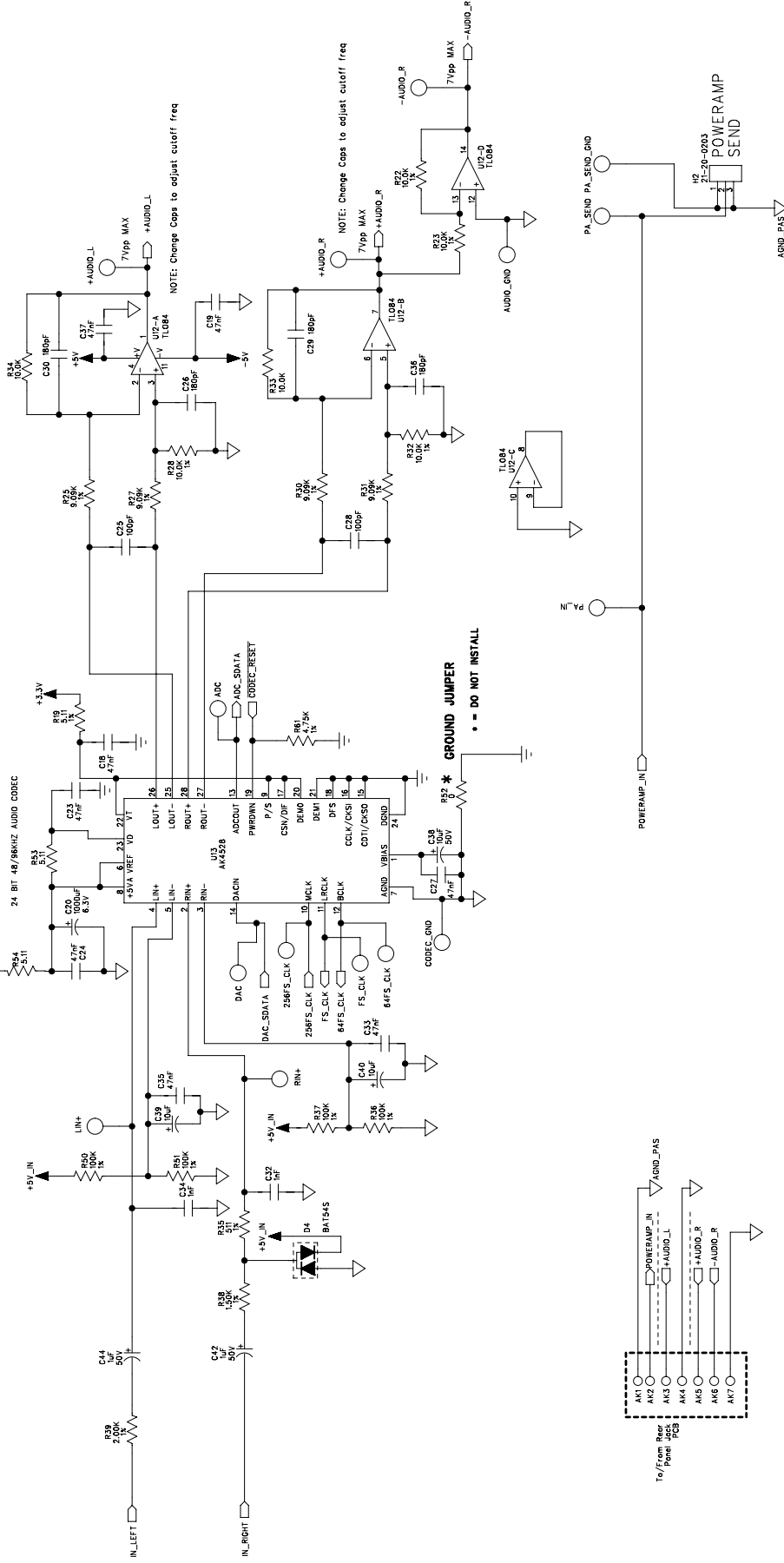


CODEC/DIROUT/PASEND/ETC

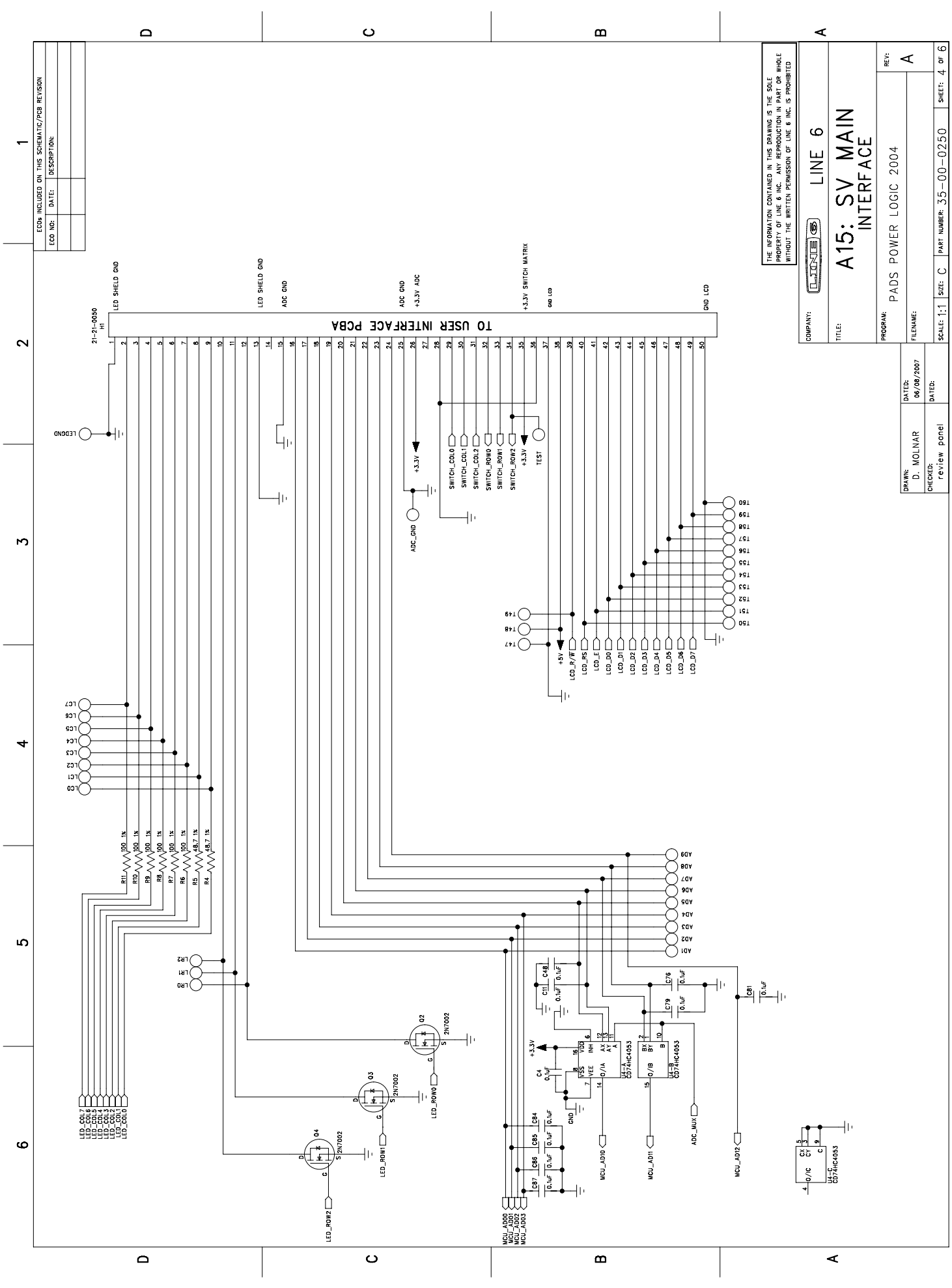
ECOs INCLUDED ON THIS SCHEMATIC/PCB REVISION	
ECO NO:	DATE:
DESCRIPTION:	

CODEC Outputs Are:
2.7Vpp Max / 5.4Vpp diff Max



THE INFORMATION CONTAINED IN THIS DRAWING IS THE SOLE PROPERTY OF LINE 6 INC. ANY REPRODUCTION IN PART OR WHOLE WITHOUT THE WRITTEN PERMISSION OF LINE 6 INC. IS PROHIBITED.

COMPANY:	LINE 6
TITLE:	A15: SV MAIN
PROGRAM:	PADS POWER LOGIC 2004
REV:	A
DRAWN:	G. Kiley / D. McNeil
CHECKED:	review panel
DATED:	06/08/2007
SCALE:	1:1
SHEET:	C
PART NUMBER:	35-00-0250
SHEET:	2 of 6



THE INFORMATION CONTAINED IN THIS DRAWING IS THE SOLE
PROPERTY OF LINE 6 INC. ANY REPRODUCTION IN PART OR WHOLE
WITHOUT THE WRITTEN PERMISSION OF LINE 6 INC. IS PROHIBITED.

COMPANY: LINE 6	
TITLE: A15: SV MAIN INTERFACE	
PROGRAM: PADS POWER LOGIC 2004	REV: A
FILENAME:	
DRAWN: D. MOLNAR	DATED: 06/08/2007
CHECKED: review panel	DATED:
SCALE: 1:1	SHEET: C
PART NUMBER: 35-00-0250	SHEET: 4 OF 6

6

5

4

3

2

1

ECOs INCLUDED ON THIS SCHEMATIC/PCB REVISION

ECO NO: DATE: DESCRIPTION:

INPUT

TUBE SOCKETS

S1 FOR 12AX7 V1
TUBE SOCKET VT9-PT
21-18-0007S3 FOR 5881 V3
TUBE SOCKET VT8-PTS-B
21-18-0006S5 FOR 5881 V5
TUBE SOCKET VT8-PTS-B
21-18-0006S2 FOR 12AX7 V2
TUBE SOCKET VT9-PT
21-18-0007S4 FOR 5881 V4
TUBE SOCKET VT8-PTS-B
21-18-0006S6 FOR 5881 V6
TUBE SOCKET VT8-PTS-B
21-18-0006

BOARD MOUNTING HOLES

MT1 MT2 MT3 MT4 MT5 MT6 MT7 MT8 MT9 MT10 MT11 MT12 MT13

MASTER VOLUME
POT

PRESENCE POT

DESIGN BY REINHOLD BOGNER

PRELIMINARY DRAWINGS
FOR QUOTATION PURPOSES ONLY
DO NOT USE FOR PRODUCTIONDRAWN:
D. MOLNAR
CHECKED:
review panelDATED:
8/7/2007

DATED:

COMPANY:

LINE 6

TITLE:

A15: SV100 POWERAMP-SUPPLY

PROGRAM:

PADS LOGIC 2004

FILENAME:

SCALE: 1:1

SIZE: C

PART NUMBER: 35-00-0245

SHEET: 1 OF 2

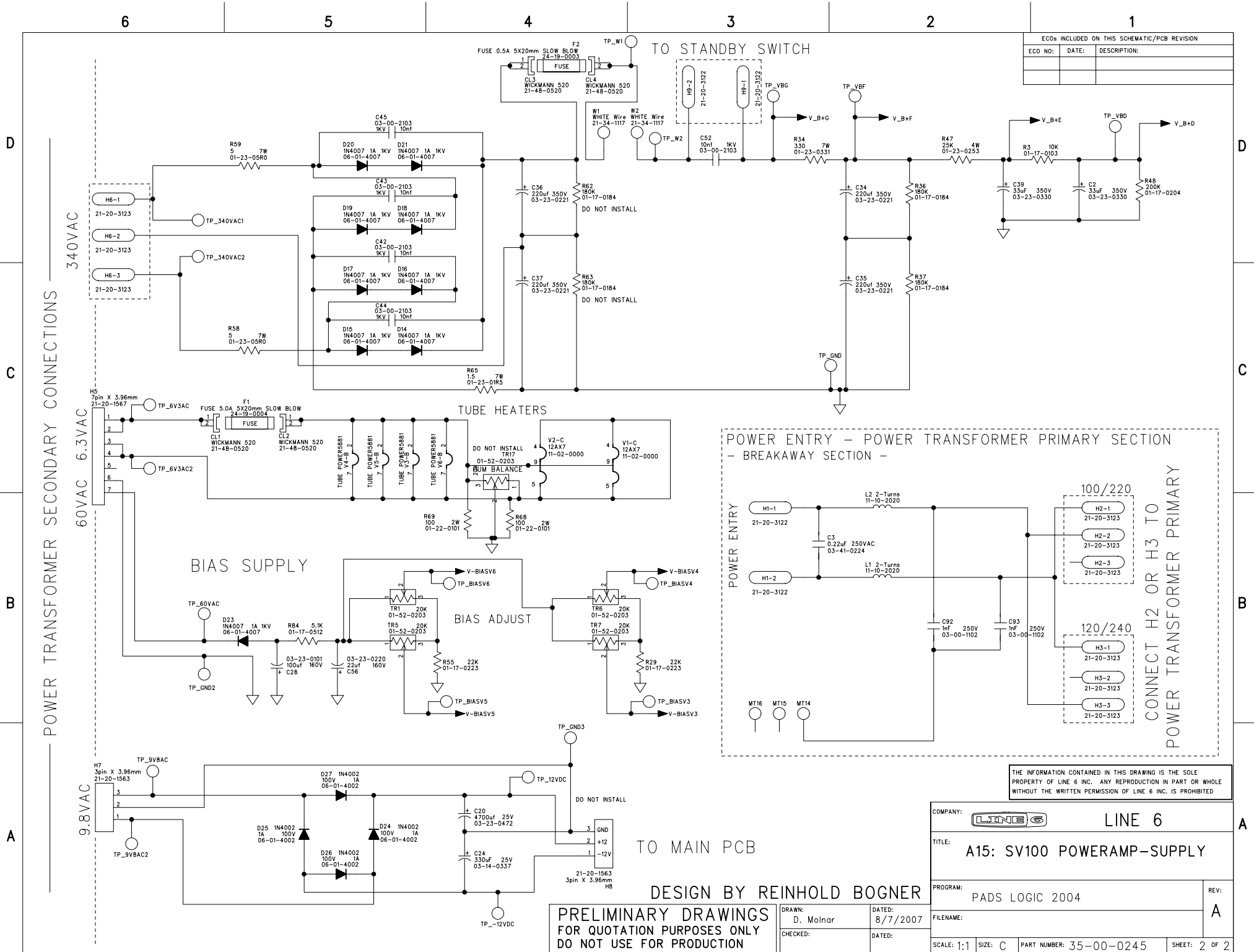
REV:
ATO OUTPUT TRANSFORMER
PRIMARY

H11 and H12 for production BIAS adjust

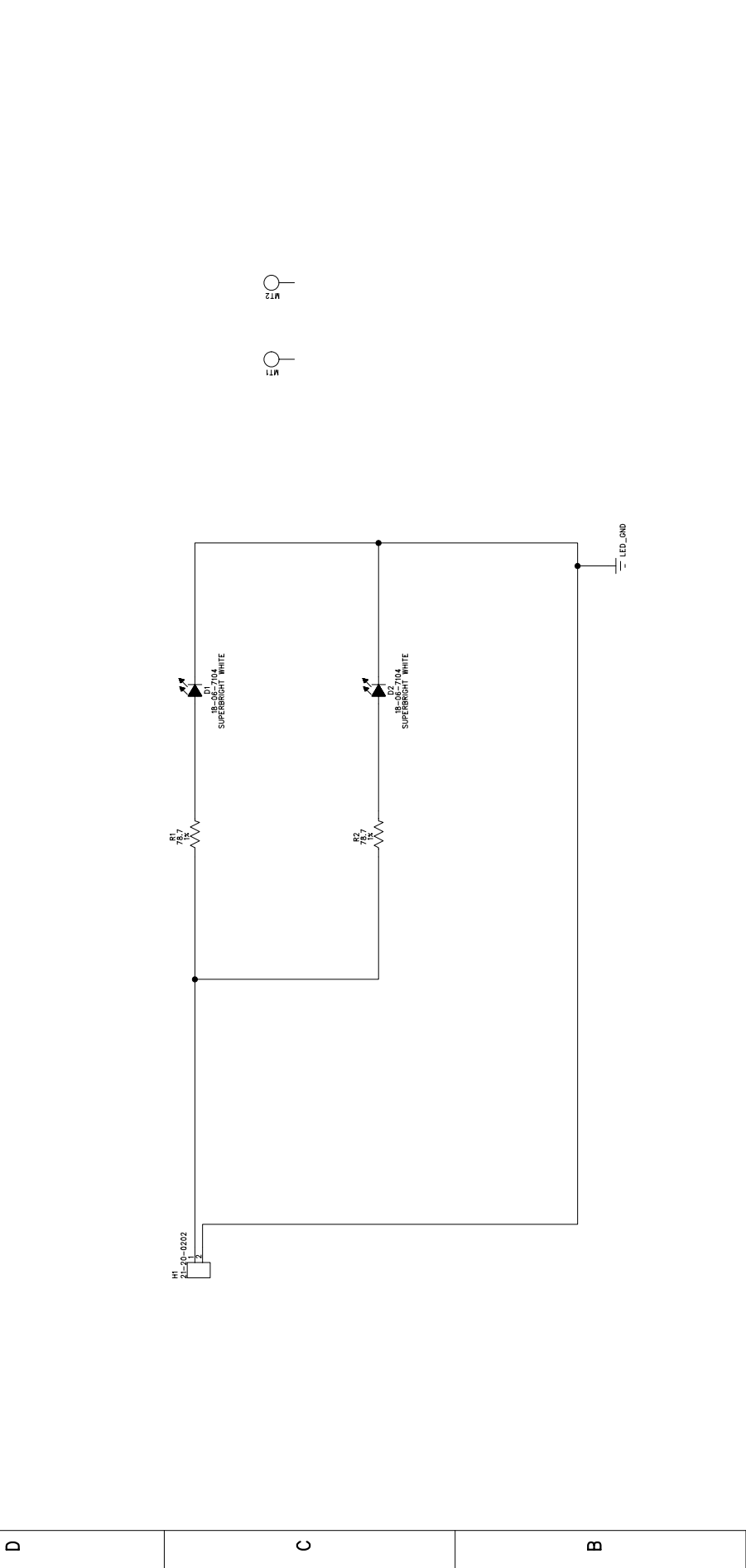
H11-1 21-20-3125 BROWN
H11-2 21-20-3125 RED
H11-3 21-20-3125 BLUE
H11-4 21-20-3125
H11-5 21-20-3125H11-1 21-20-3125 BIAS V3
H11-2 21-20-3125 BIAS V4
H11-3 21-20-3125
H12-1 21-20-3125 BIAS V5
H12-2 21-20-3125 BIAS V6

FEEDBACK


THE INFORMATION CONTAINED IN THIS DRAWING IS THE SOLE
PROPERTY OF LINE 6 INC. ANY REPRODUCTION IN PART OR WHOLE
WITHOUT THE WRITTEN PERMISSION OF LINE 6 INC. IS PROHIBITED



ECOs INCLUDED ON THIS SCHEMATIC/PCB REVISION	
ECO NO:	DATE:
DESCRIPTION:	

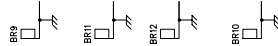


THE INFORMATION CONTAINED IN THIS DRAWING IS THE SOLE
PROPERTY OF LINE 6 INC.. ANY REPRODUCTION IN PART OR WHOLE
WITHOUT THE WRITTEN PERMISSION OF LINE 6 INC. IS PROHIBITED.

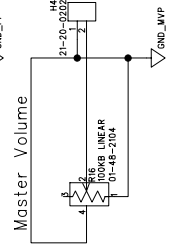
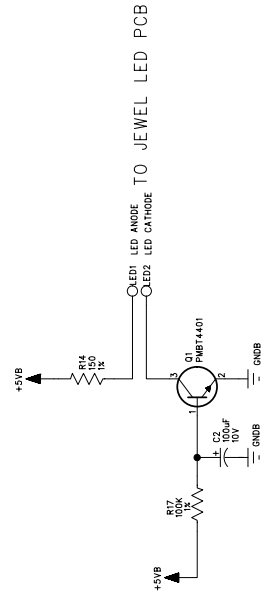
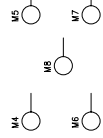
COMPANY: 		LINE 6	
TITLE:		A15: SV LED BOARD	
PROGRAM:	PADS LOGIC 2004		REV: A
	FILENAME:		
SCALE: 1:1	SHEET: C	PART NUMBER: 35-00-0249	SHEET: 1 of 1

DRAWN: D. MOLNAR	DATED: 7/3/2007
CHECKED: review panel	DATED:

PRELIMINARY DRAWINGS FOR QUOTATION PURPOSES ONLY DO NOT USE FOR PRODUCTION	
--	--



Mounting Holes on UI RIGHT PCB Half for 4-way-switch



A15: SV UI PCB
RIGHT HALF

FILENAME:	
-----------	--

D. MOLTAN
CHECKED:

PRELIMINARY DRAWINGS
FOR QUOTATION PURPOSES ONLY
DO NOT USE FOR PRODUCTION

DATED: 6.07.2

review panel.

review panel.

review panel.

6	5	4	3	2	1
ECO's INCLUDED ON THIS SCHEMATIC/PCB REVISION					
ECO NO:		DATE:		DESCRIPTION:	
JEWEL LIGHT LED PCB					
M9					
M10					
THE INFORMATION CONTAINED IN THIS DRAWING IS THE SOLE PROPERTY OF LINE 6 INC.. ANY REPRODUCTION IN PART OR WHOLE WITHOUT THE WRITTEN PERMISSION OF LINE 6 INC. IS PROHIBITED.					
COMPANY: LINE 6					
TITLE: A15: SV UI					
JEWEL LIGHT LED PCB					
PROGRAM: PADS LOGIC 2004					
REV: A					
DRAWN: D. MOLNAR					
CHECKED: review panel					
DATED: 6.07.2007					
PRELIMINARY DRAWINGS FOR QUOTATION PURPOSES ONLY DO NOT USE FOR PRODUCTION					
SCALE: 1:1		SIZE: C		PART NUMBER: 35-00-0247-2	
				SHEET: 3 OF 3	

