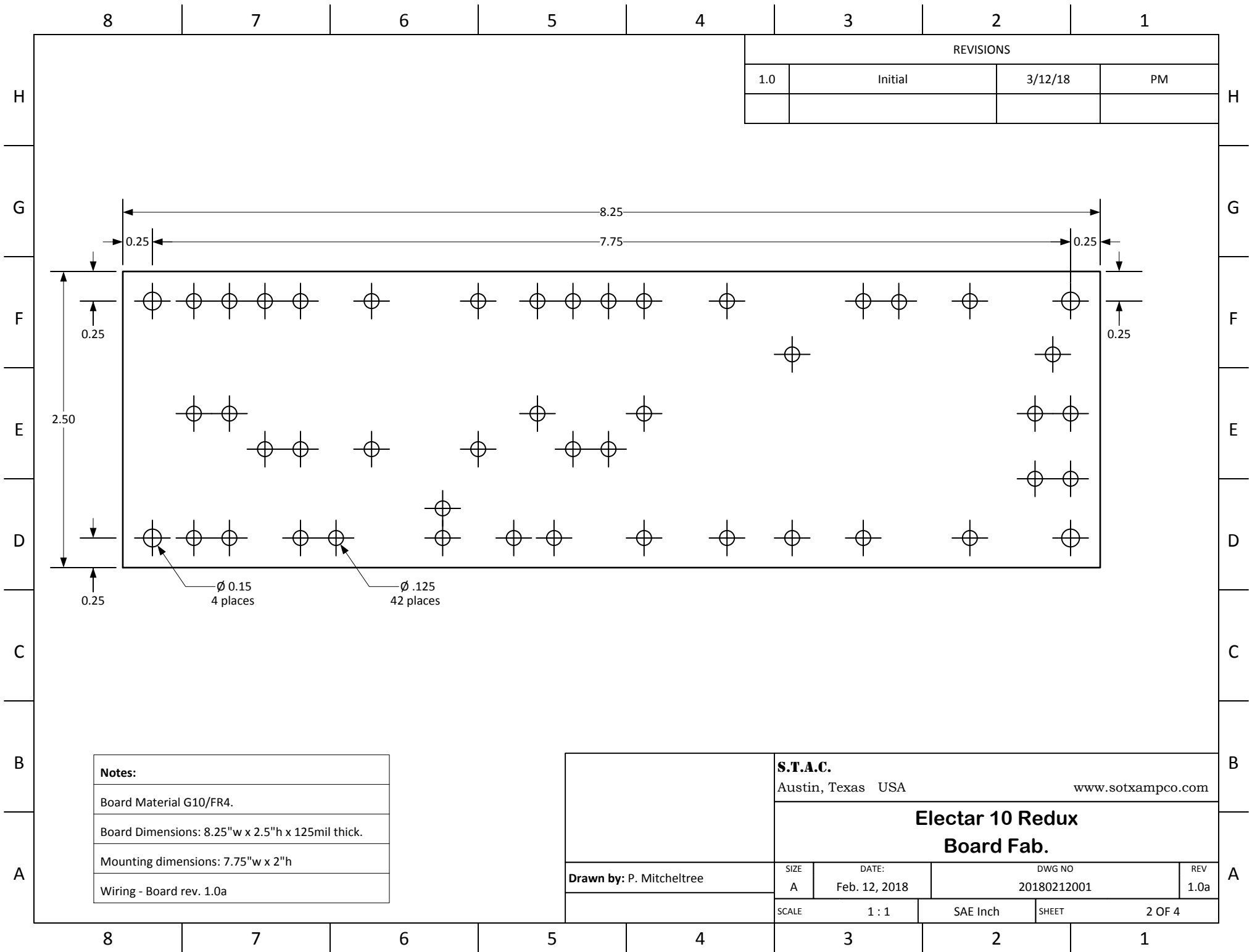
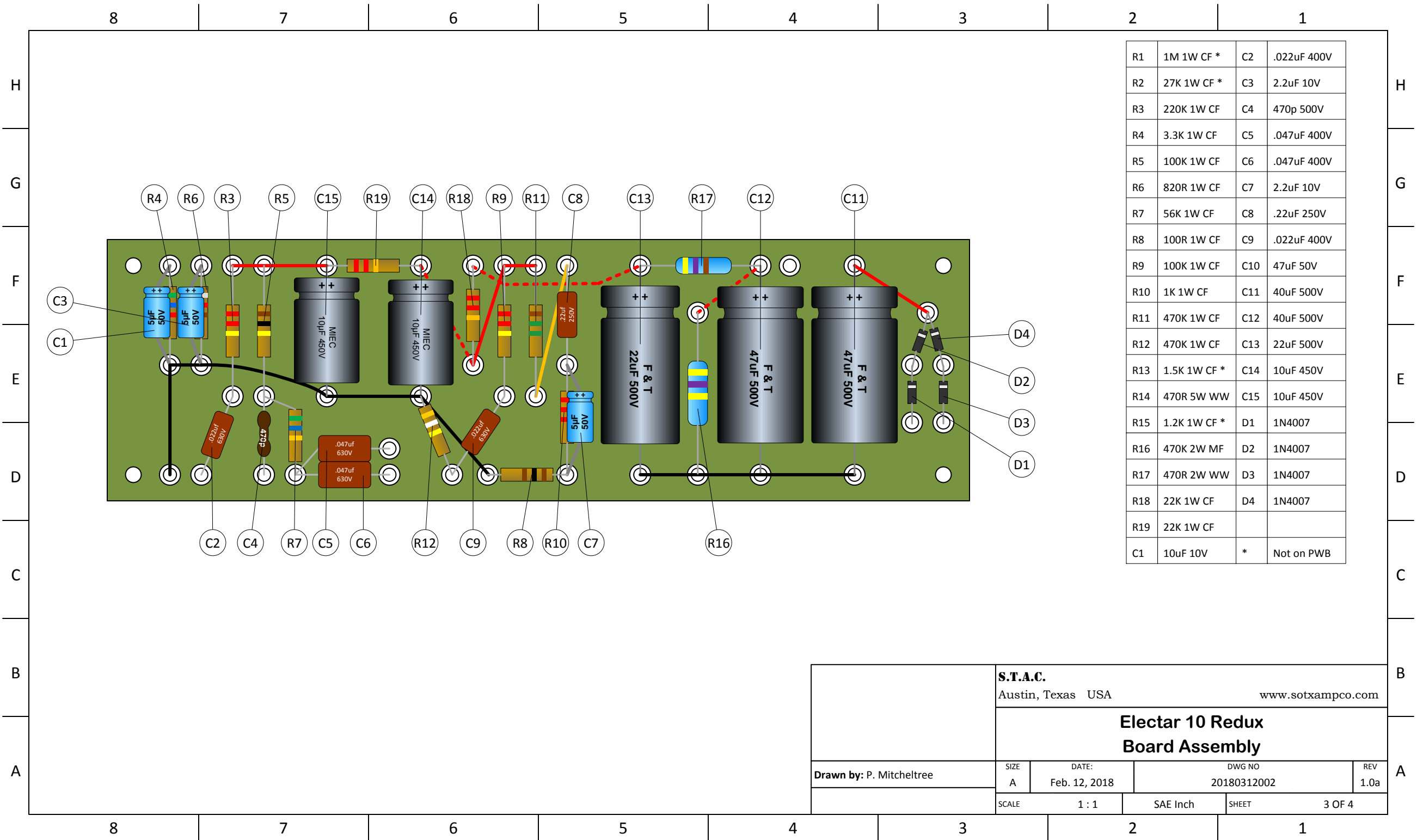
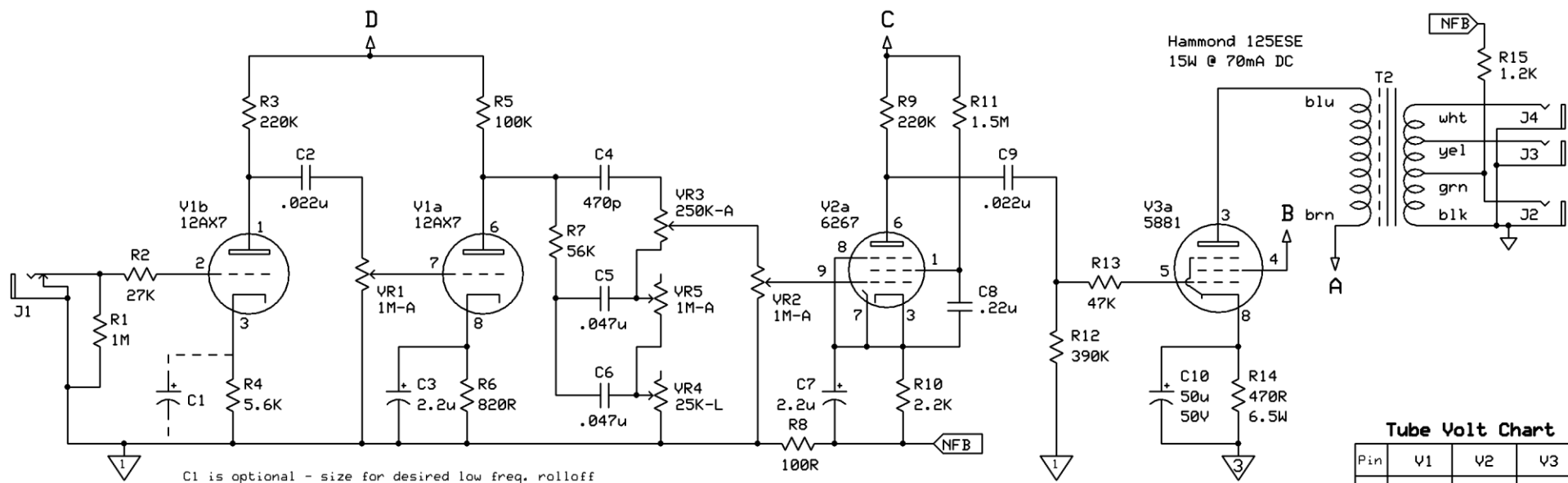


REVISIONS			
1.0	Initial	3/3/18	PM
1.0a	Added tie point for HT	1/20/19	PM

S.T.A.C. Austin, Texas USA www.sotxampco.com	Electar 10 Redux Chassis Wiring		
	SIZE A	DATE: Mar. 3, 2018	DWG NO 20180303001
Drawn by: P. Mitcheltree		SCALE 1 : 1	REV 1.0a
		SAE Inch	SHEET 1 OF 4

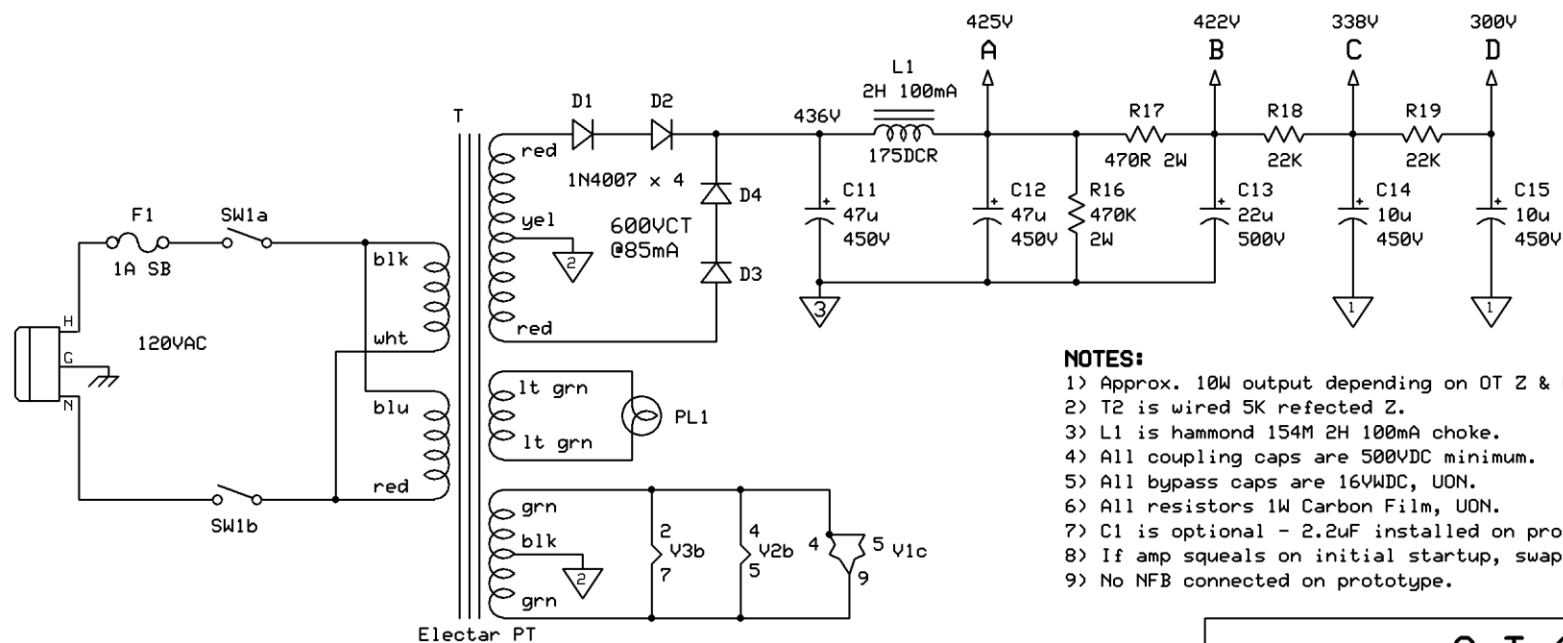






Tube Volt Chart

Pin	V1	V2	V3
1	218	102	n/c
2	g1	n/c	fil
3	2.05	2.37	415
4	fil	fil	422
5	fil	fil	g1
6	173	144	n/c
7	g1	2.37	fil
8	1.06	2.37	32.5
9	fil	g1	g1



NOTES:

- 1) Approx. 10W output depending on OT Z & P_{diss} of V3.
- 2) T2 is wired 5K reflected Z.
- 3) L1 is hammond 154M 2H 100mA choke.
- 4) All coupling caps are 500VDC minimum.
- 5) All bypass caps are 16VWDC, UON.
- 6) All resistors 1W Carbon Film, UON.
- 7) C1 is optional - 2.2uF installed on prototype.
- 8) If amp squeals on initial startup, swap OT blu & brn leads.
- 9) No NFB connected on prototype.

S.T.A.C.

Electar Tube 10 Redux

P. Mitcheltree

Rev 1.0
2/18/2018

Page 1 of 1