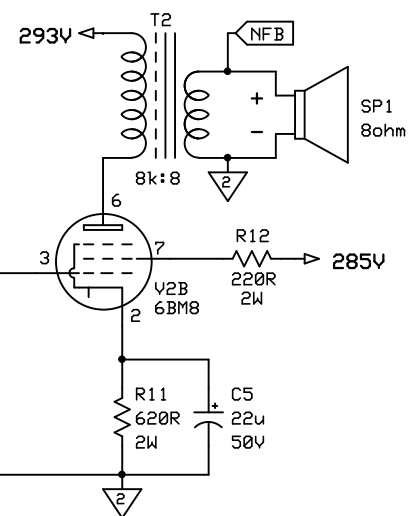
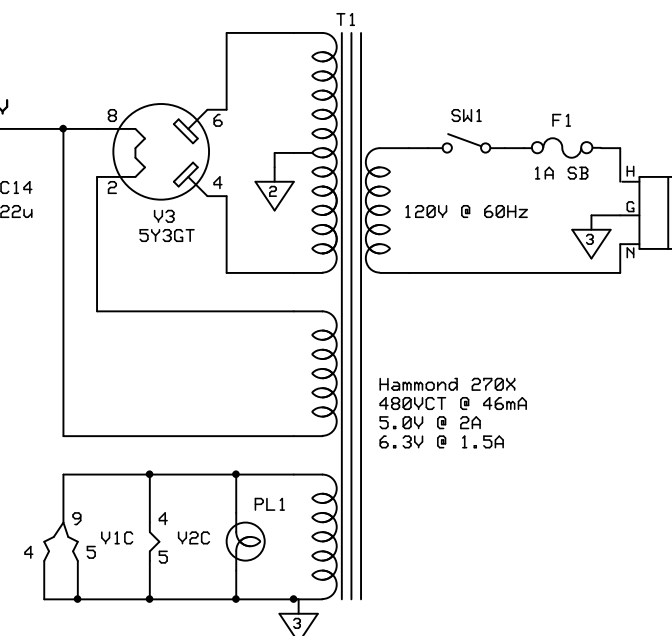
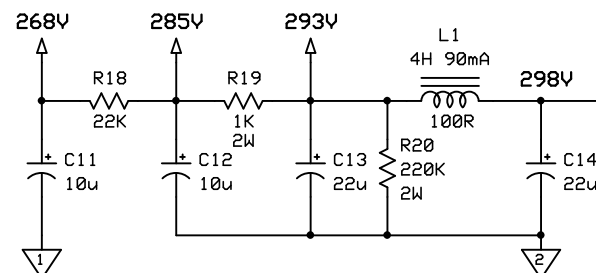
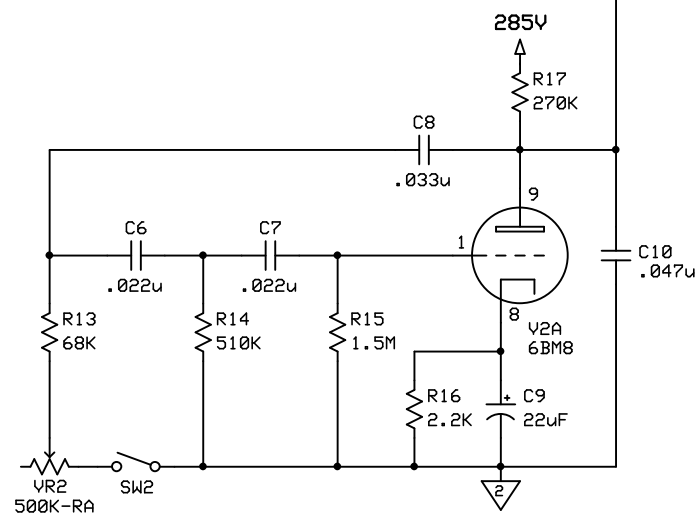


Classictone 40-18030



Valve Voltage Chart

Pin	V1	V2	V3
1		G1	--
2	G1		
3		G1	--
4	Gnd	Fi1	
5	Gnd	Gnd	--
6			
7	G1		--
8			
9	Fi1		N/A



Hammond 270X  
480VCT @ 46mA  
5.0V @ 2A  
6.3V @ 1.5A

# Notes:

R1 & switched jack not present in original.  
L1 & C14 & R20 not present in original.  
All resistors 1W carbon film, UON.  
All power supply caps 350VDC.  
All coupling caps 400VDC.  
All bypass caps 10VDC, UON.

S.T.A.C.

Gibsohn GA5-T Improved

P. Mitcheltree

Rev 1.0

12/26/2017

Page 1