

KOCH
GUITAR ELECTRONICS
Amersfoort
The Netherlands

© Copyright 2006, Koch Guitar Electronics

DRAWN:
Dolf Koch

DATE:
14-11-2007

SUPERNOVA

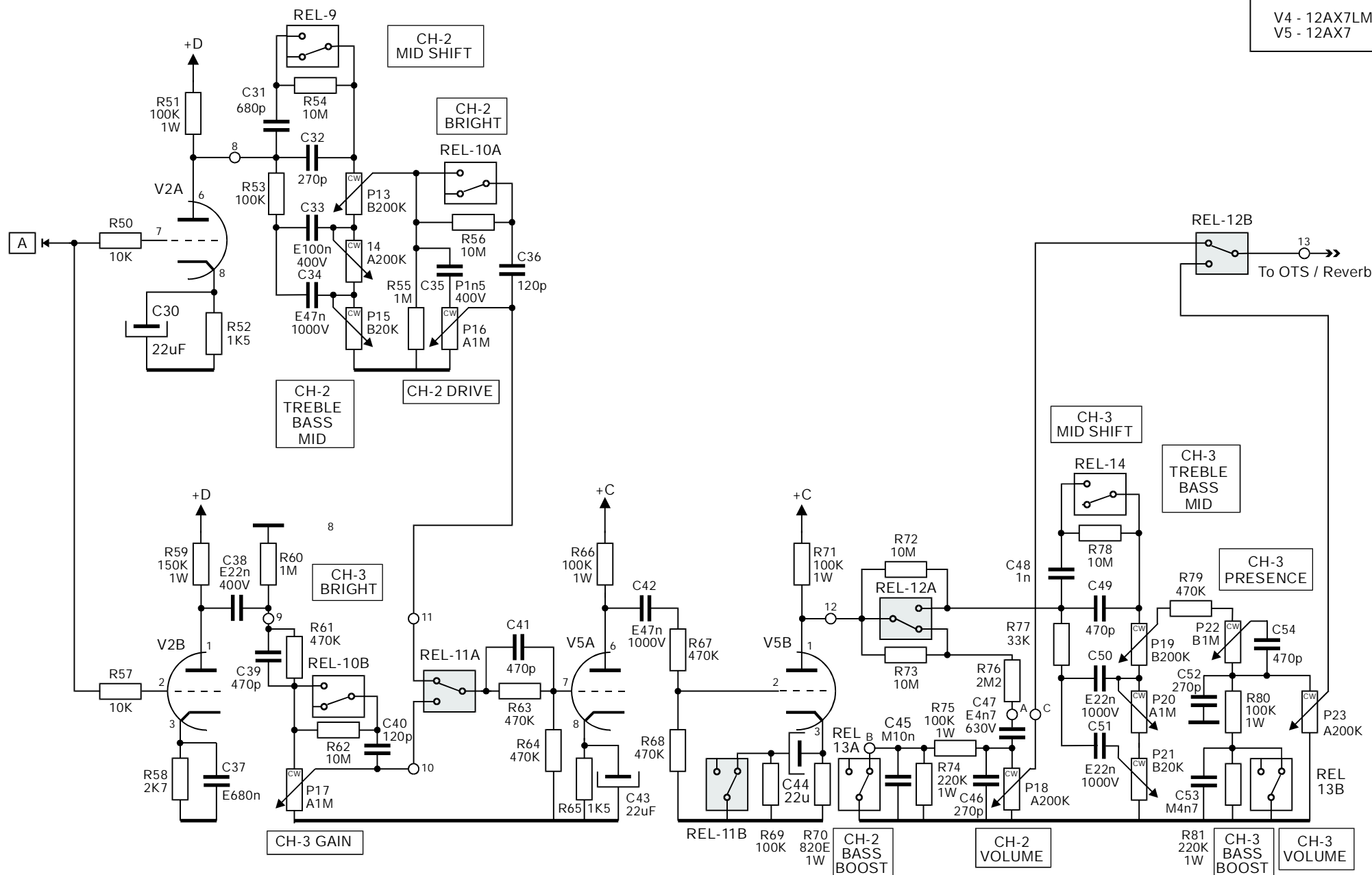
MARK:
1.0

SERIAL NRS:
x... - x...

PRE-AMP 1

PAGE:
1 of 11

V4 - 12AX7LM
V5 - 12AX7



KOCH
GUITAR ELECTRONICS
Amersfoort
The Netherlands

© Copyright 2006, Koch Guitar Electronics

DRAWN:
Dolf Koch

DATE:
14-11-2007

SUPERNOVA

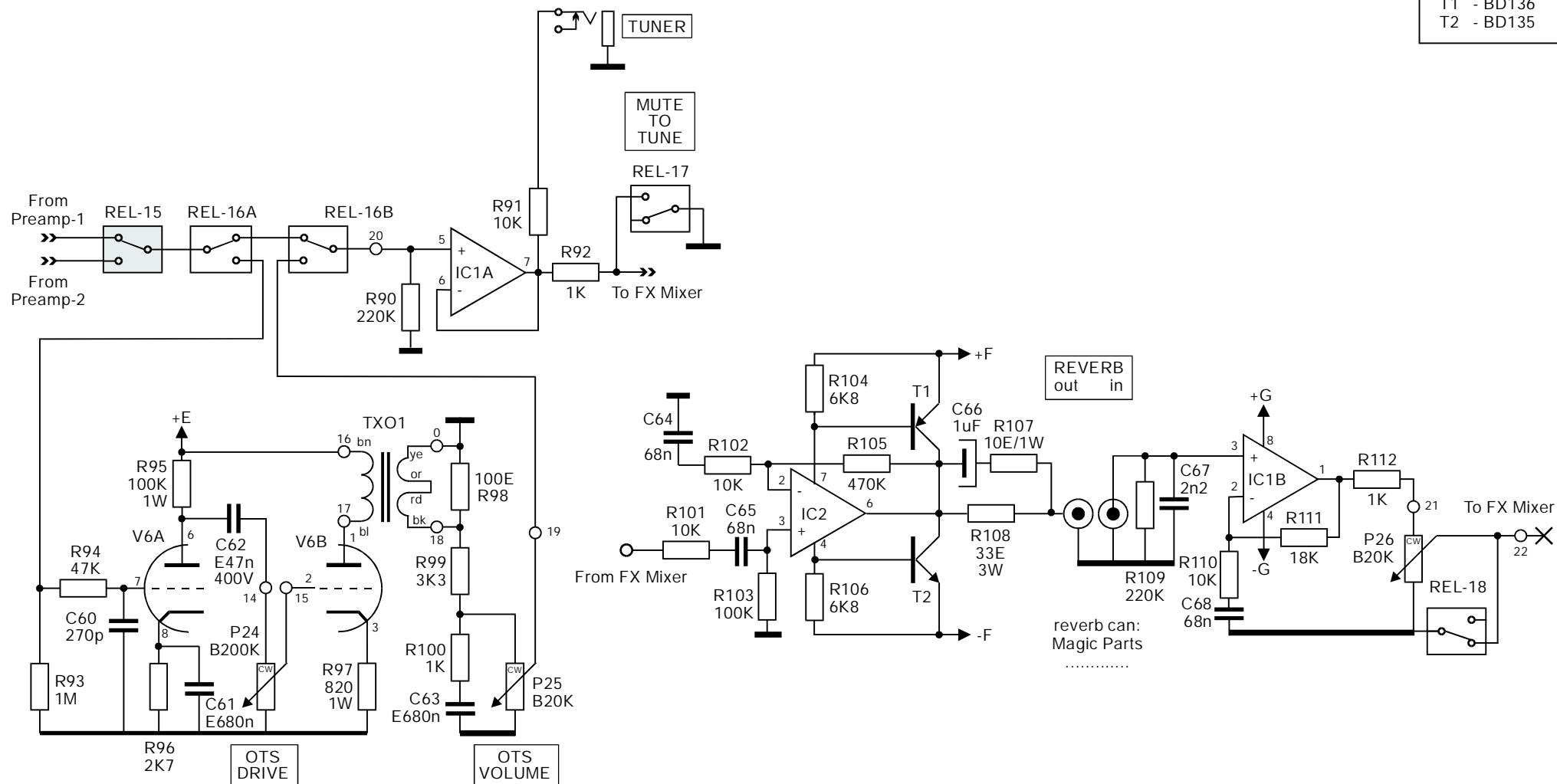
MARK:
1.0

SERIAL NRS:
x.. - x...

PRE-AMP 2

PAGE:
2 of 11

IC1 - OP249
IC2 - TL061
T1 - BD136
T2 - BD135



KOCH
GUITAR ELECTRONICS
Amersfoort
The Netherlands

Copyright 2006, Koch Guitar Electronics

DRAWN:
Dolf Koch

DATE:
14-11-2007

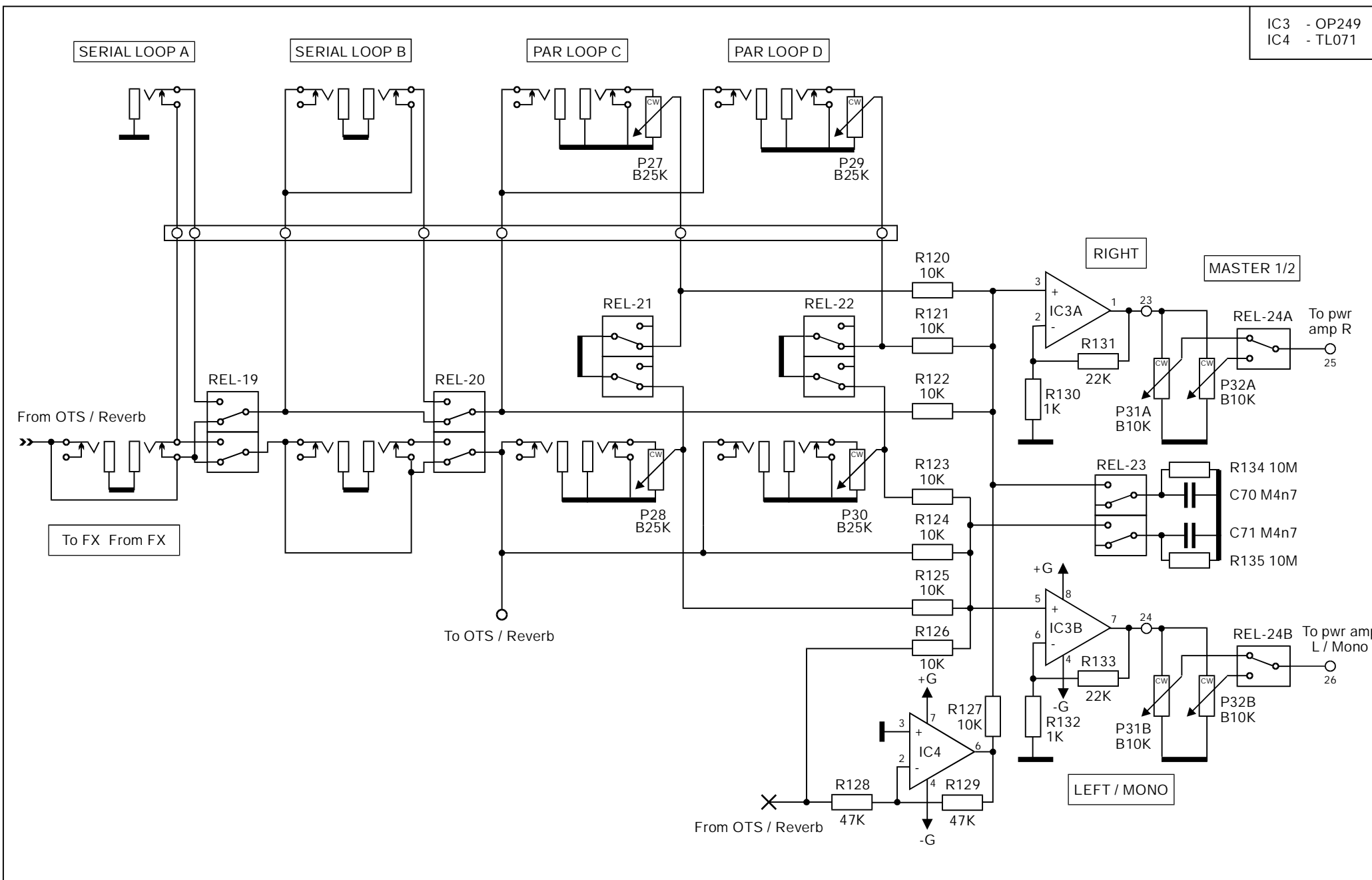
SUPERNOVA

MARK:
1.0

SERIAL NRS:
x... - x...

OTS / REVERB

PAGE:
3 of 11



KOCH
GUITAR ELECTRONICS
Amersfoort
The Netherlands

Copyright 2006, Koch Guitar Electronics

DRAWN:
Dolf Koch

DATE:
14-11-2007

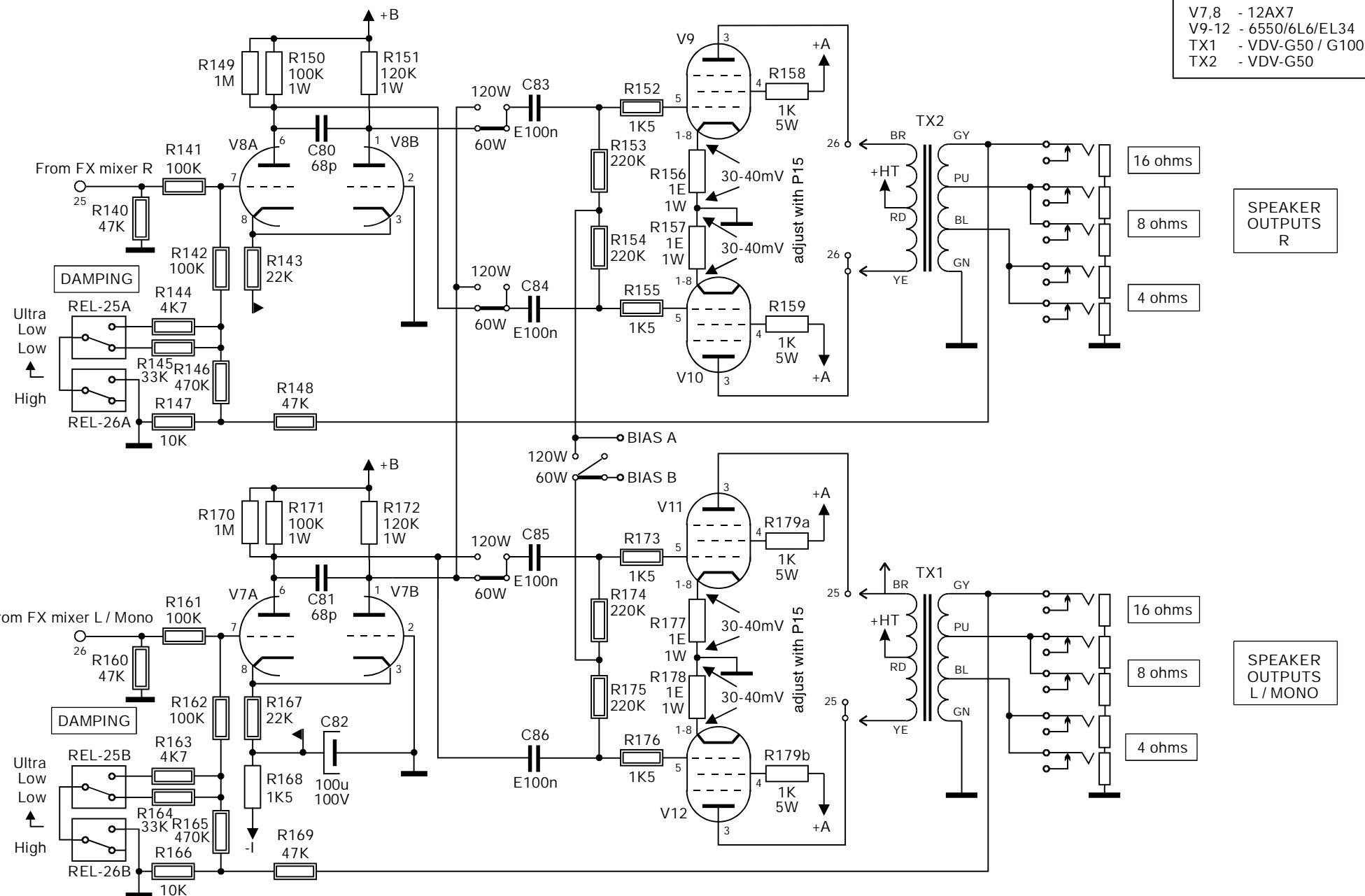
SUPERNOVA

MARK:
1.0

SERIAL NRS:
x.. - x...

FX MIXER

PAGE:
4 of 11



KOCH
GUITAR ELECTRONICS
Amersfoort
The Netherlands

© Copyright 2006, Koch Guitar Electronics

DRAWN:
Dolf Koch

DATE:
14-11-2007

SUPERNOVA

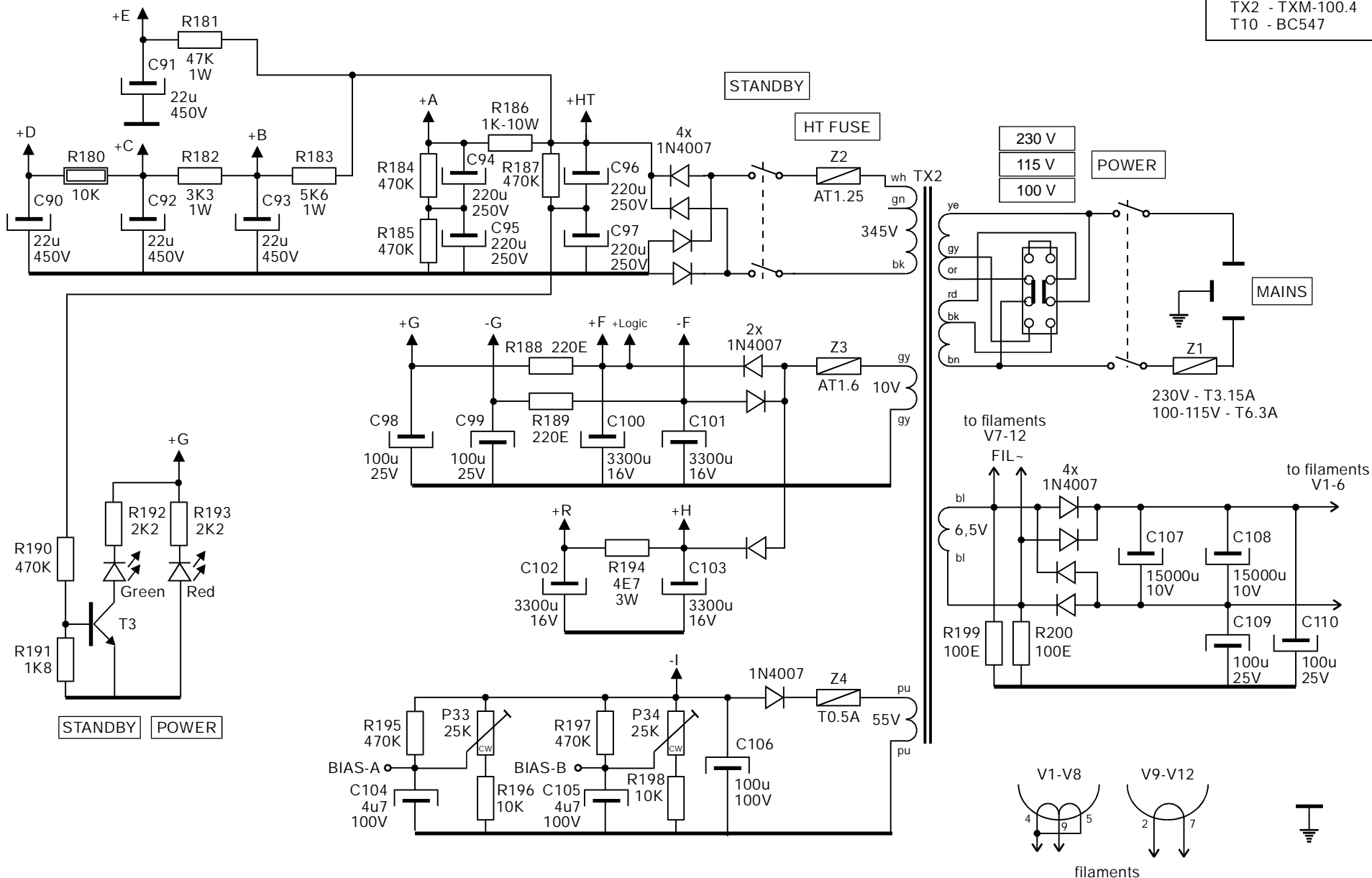
MARK:
1.0

SERIAL NRS:
X... - X...

POWER AMP

PAGE:
5 of 11

TX2 - TXM-100.4
T10 - BC547



KOCH
GUITAR ELECTRONICS
Amersfoort
The Netherlands

© Copyright 2006, Koch Guitar Electronics

DRAWN:
Dolf Koch

DATE:
14-11-2007

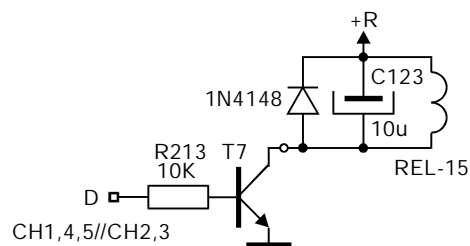
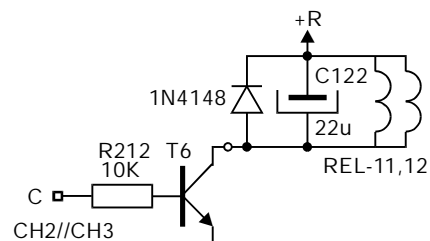
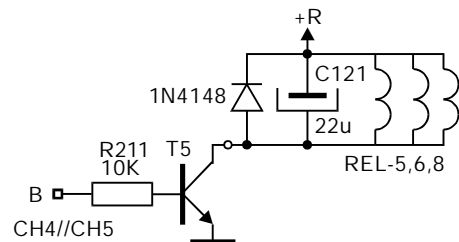
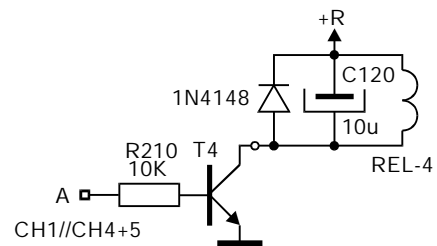
SUPERNOVA

MARK:
1.0

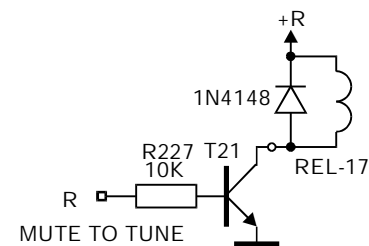
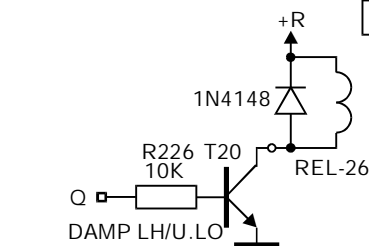
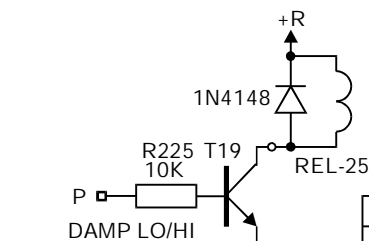
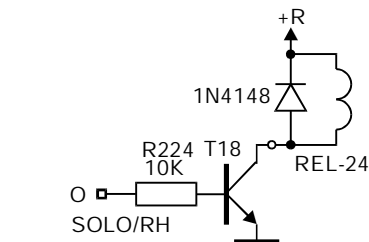
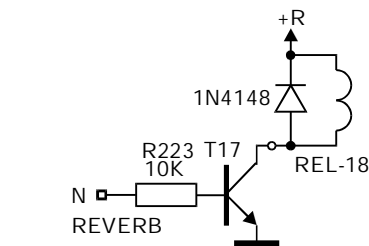
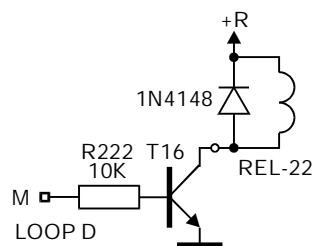
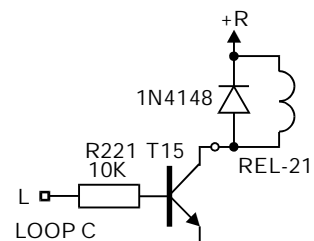
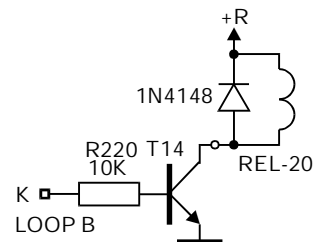
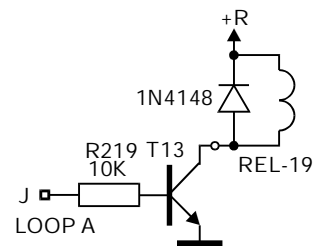
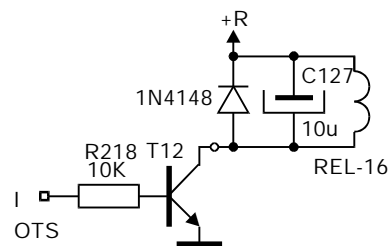
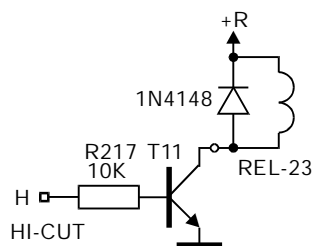
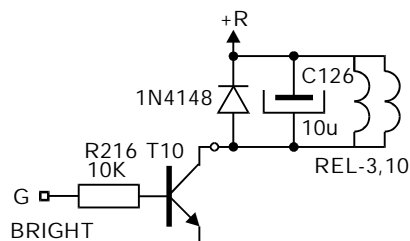
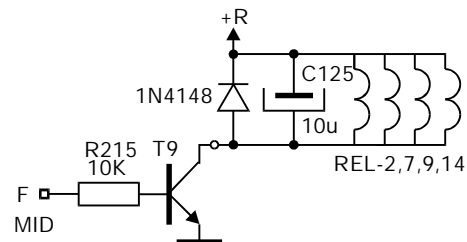
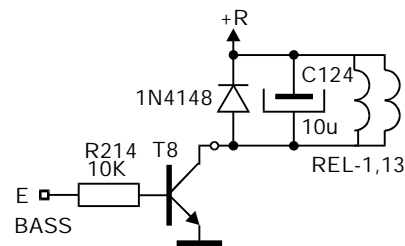
SERIAL NRS:
X... - X...

POWER SUPPLY

PAGE:
6 of 11



| | CH1 | CH2 | CH3 | CH4 | CH5 |
|---|-----|-----|-----|-----|-----|
| A | 0 | 0 | 0 | 1 | 1 |
| B | 0 | 0 | 0 | 0 | 1 |
| C | 0 | 0 | 1 | 0 | 0 |
| D | 0 | 1 | 1 | 0 | 0 |



Tx-x = BC547
REL1-25 = 12VDC

| | Hi | Lo | U-Lo |
|---|----|----|------|
| P | 0 | 0 | 1 |
| Q | 0 | 1 | 1 |



KOCH
GUITAR ELECTRONICS
Amersfoort
The Netherlands

© Copyright 2006, Koch Guitar Electronics

DRAWN:
Dolf Koch

DATE:
14-11-2007

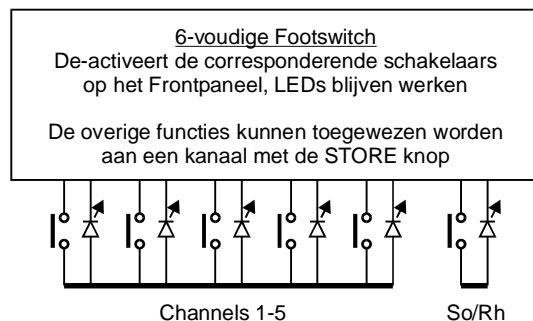
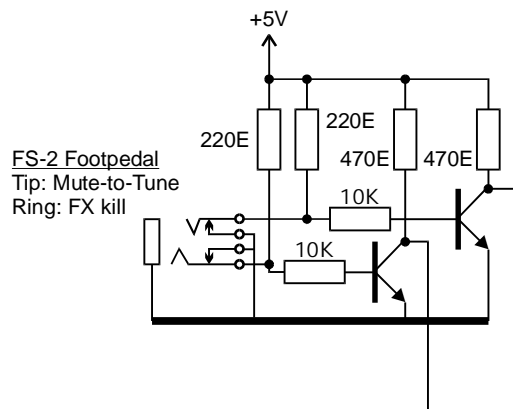
SUPERNOVA

MARK:
1.0

SERIAL NRS:
x.. - x...

Logic

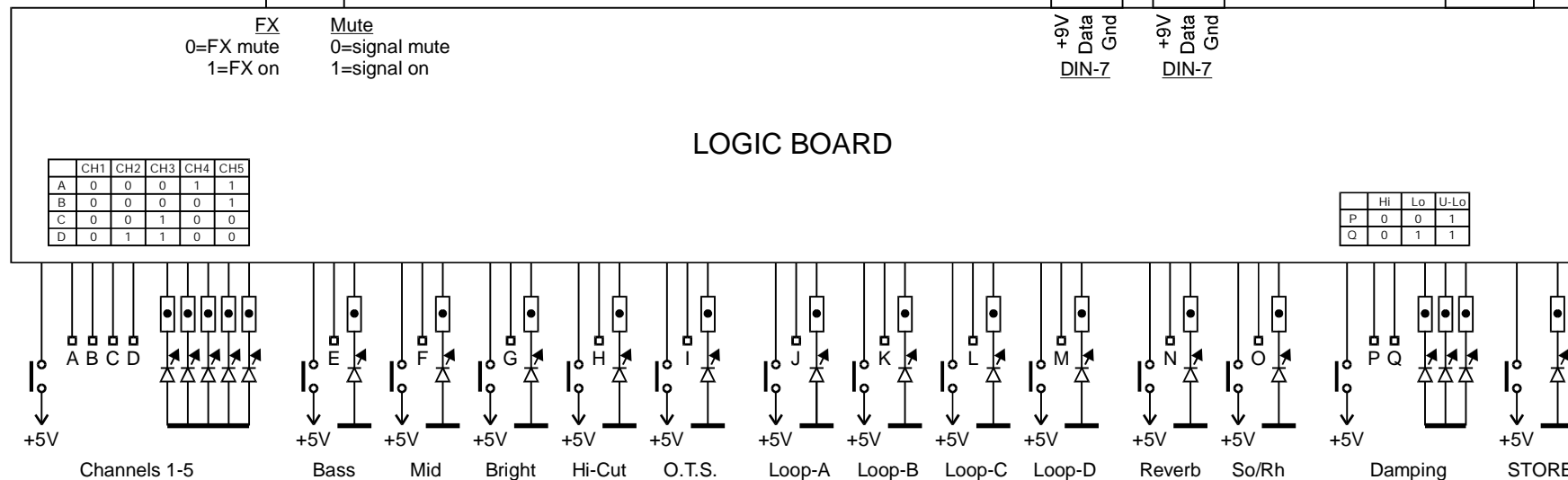
PAGE
7 of 11



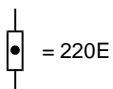
MIDI Channel Select
DIP Switch settings

| | S1 | S2 | S3 | S4 | S5 | S6 |
|------|----|----|----|----|----|----|
| OMNI | 0 | 0 | 0 | 0 | 0 | 0 |
| CH1 | ON | 0 | 0 | 0 | 0 | 0 |
| CH2 | 0 | ON | 0 | 0 | 0 | 0 |
| CH3 | ON | ON | 0 | 0 | 0 | 0 |
| CH4 | 0 | 0 | ON | 0 | 0 | 0 |
| CH5 | ON | 0 | ON | 0 | 0 | 0 |
| CH6 | 0 | ON | ON | 0 | 0 | 0 |
| CH7 | ON | ON | ON | 0 | 0 | 0 |
| CH8 | 0 | 0 | 0 | ON | 0 | 0 |
| CH9 | ON | 0 | 0 | ON | 0 | 0 |
| CH10 | 0 | ON | 0 | ON | 0 | 0 |
| CH11 | ON | ON | 0 | ON | 0 | 0 |
| CH12 | 0 | 0 | ON | ON | 0 | 0 |
| CH13 | ON | 0 | ON | ON | 0 | 0 |
| CH14 | 0 | ON | ON | ON | 0 | 0 |
| CH15 | ON | ON | ON | ON | 0 | 0 |
| CH16 | 0 | 0 | 0 | 0 | ON | 0 |

Connections for MIDI Footcontroller
and FS-6 Footpedal



Switches + LEDs on Frontpanel



KOCH
GUITAR ELECTRONICS
Amersfoort
The Netherlands

© Copyright 2006, Koch Guitar Electronics

DRAWN:
Dolf Koch

DATE:
14-11-2007

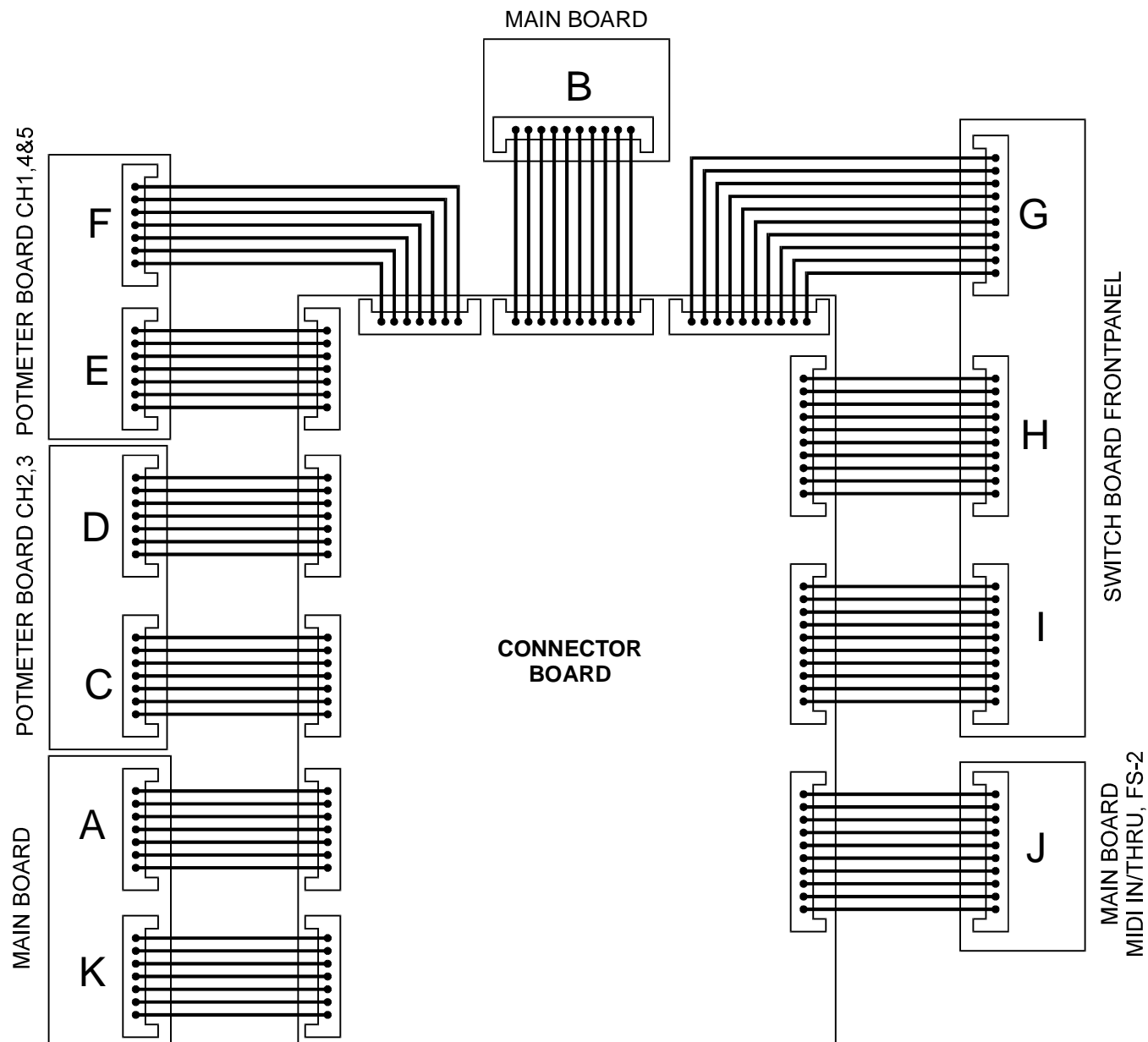
SUPERNOVA

MARK:
1.0

SERIAL NRS:
x.. - x...

LOGIC

PAGE:
8 of 11



KOCH
GUITAR ELECTRONICS
 Amersfoort
 The Netherlands

© Copyright 2006, Koch Guitar Electronics

DRAWN:
 Dolf Koch

DATE:
 14-11-2007

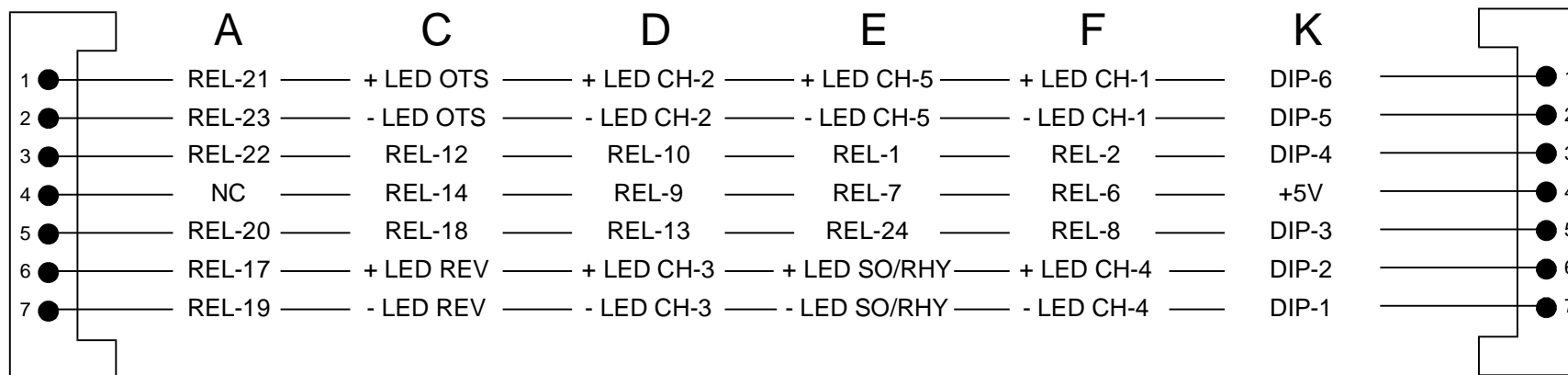
SUPERNOVA

MARK:
 1.0

SERIAL NRS:
 X.. - X...

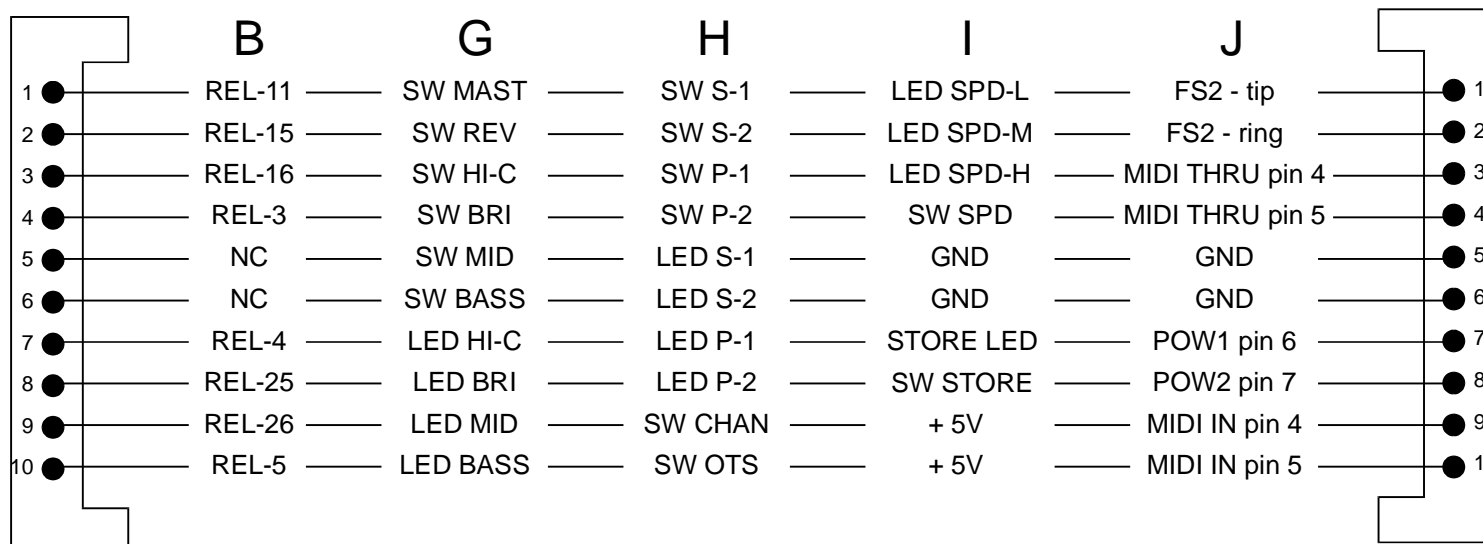
CONNECTOR BOARD

PAGE:
 9 of 11



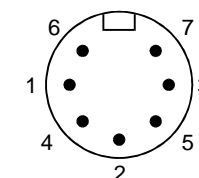
Main, Potmeter &
Switch Board

Connector
Board



Connector
Board

DIN 7
Rear view



KOCH
GUITAR ELECTRONICS
Amersfoort
The Netherlands

© Copyright 2006, Koch Guitar Electronics

DRAWN:
Dolf Koch

DATE:
14-11-2007

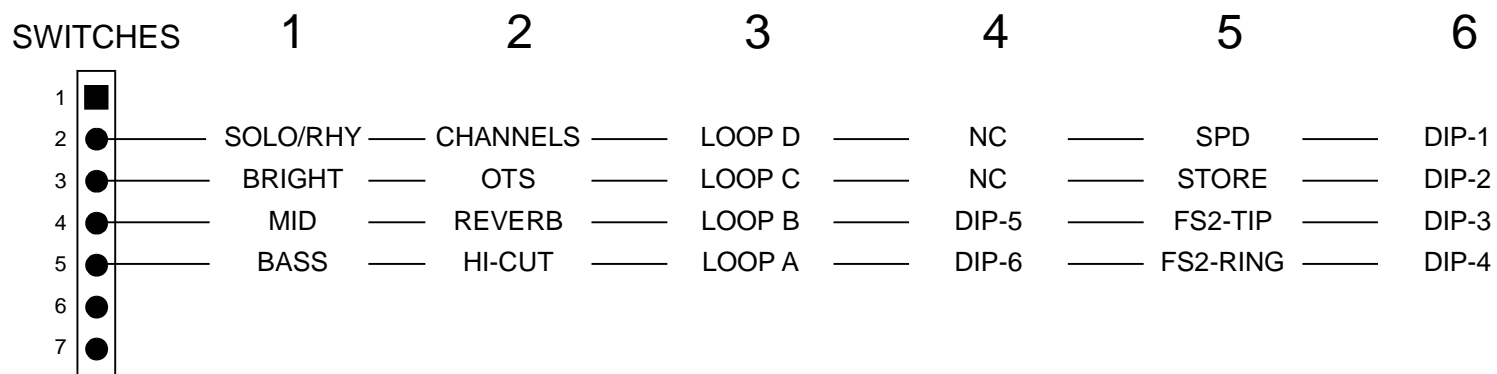
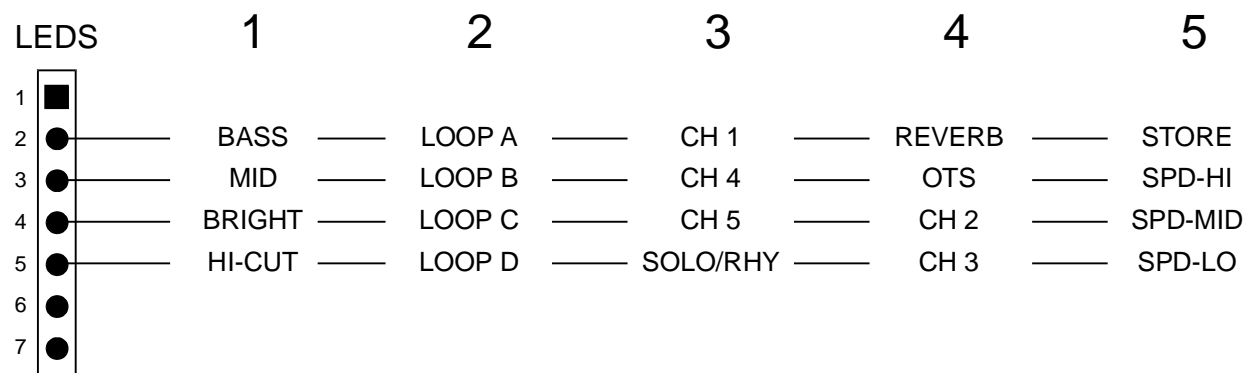
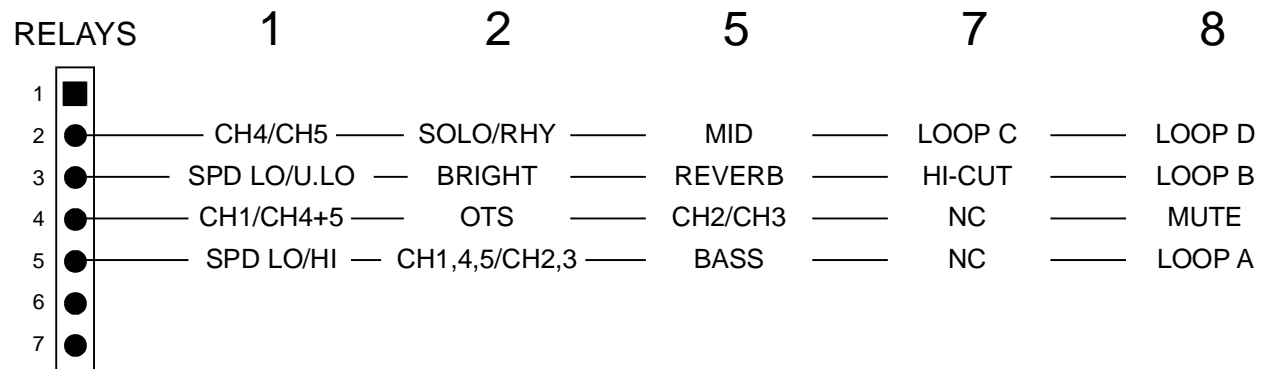
SUPERNOVA

MARK:
1.0

SERIAL NRS:
X.. - X...

CONNECTOR BOARD

PAGE:
10 of 11



KOCH
GUITAR ELECTRONICS
Amersfoort
The Netherlands

© Copyright 2006, Koch Guitar Electronics

DRAWN:
Dolf Koch

DATE:
14-11-2007

SUPERNOVA

MARK:
1.0

SERIAL NRS:
X.. - X...

LOGIC BOARD

PAGE:
11 of 11