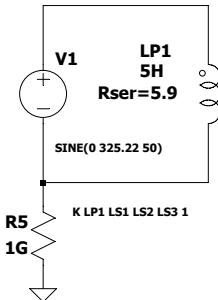


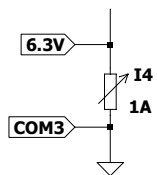
$$K = (260V \text{ RMS} = 367.74 \text{ Vp}) / (230 \text{ RMS} = 325.22 \text{ Vp}) = 1.13$$

$$LS1 = (1.13 \times 1.13) \times 5 \text{ (SE IL PRIMARIO E' 5H)} = 6.38H$$
$$K = (12.6V \text{ RMS} = 17.8 V_p) / (230 \text{ RMS} = 325.22 V_p) = 0.054$$

$$LS1 = (0.054 \times 0.054) \times 5 (SE \text{ IL PRIMARIO E' 5H}) = 14.58 \text{ mH}$$
$$K = (6.3 \text{ V RMS} = 8.9 \text{ Vp}) / (230 \text{ RMS} = 325.22 \text{ Vp}) = 0.027$$

$$LS1 = (0.027 \times 0.027) \times 5 \text{ (SE IL PRIMARIO E' 5H)} = 3.65 \text{ mH}$$


6.2 V rms



LS1
6.38H
Rser=11

LS2
15mH
Rser=0.125

LS3
3.65mH
Rser=0.7

12.4V rms

