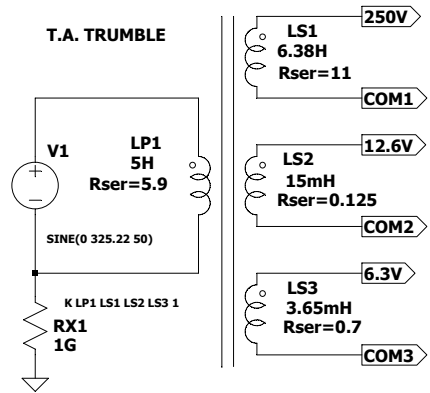


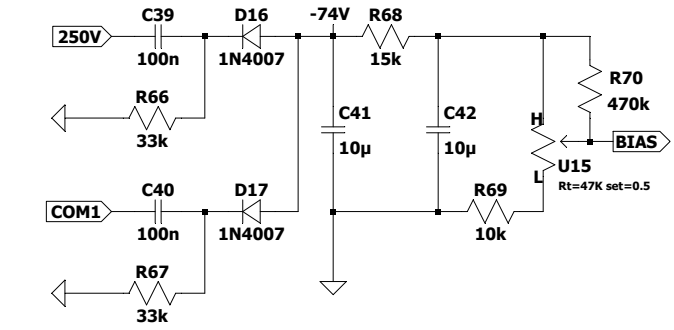
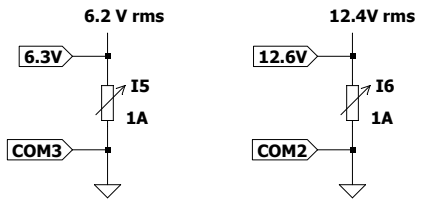
T.A. TRUMBLE



SECONDARIO 0 - 250 V:
 $K = (250 \text{ RMS} = 367.74 \text{ Vp}) / (230 \text{ RMS} = 325.22 \text{ Vp}) = 1.13$
 $LS1 = (1.13 \times 1.13) \times 5 \text{ (SE IL PRIMARIO E' 5H)} = 6.38\text{H}$

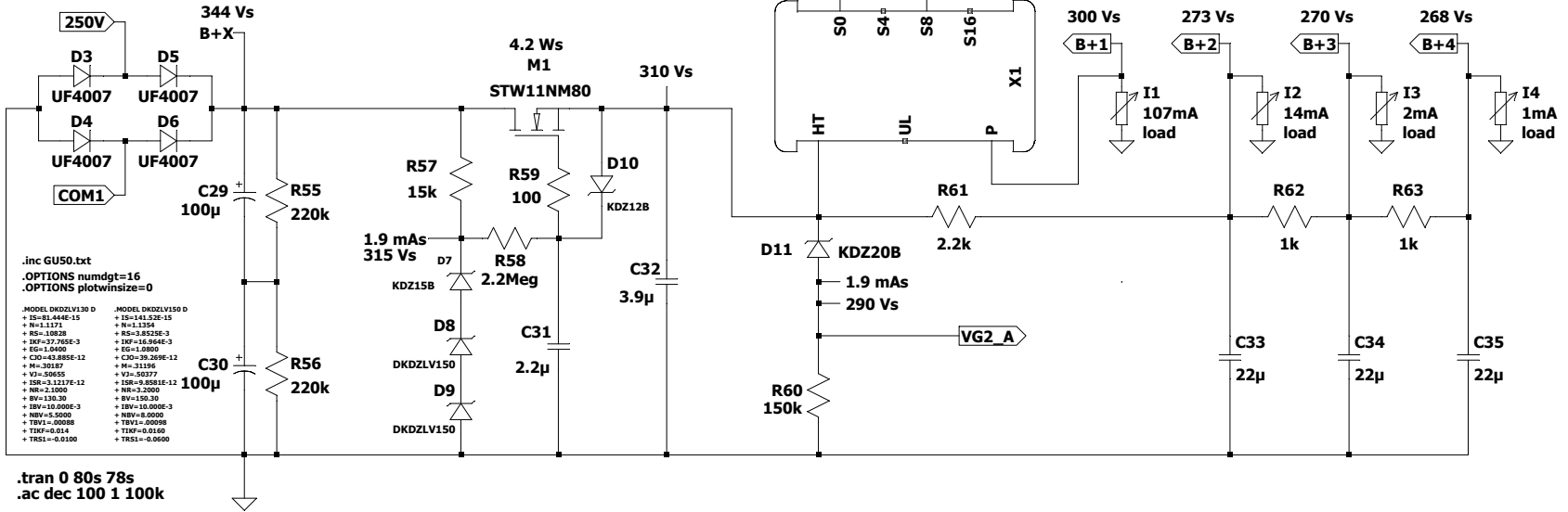
SECONDARIO 0 - 12.6 V:
 $K = (12.6 \text{ RMS} = 17.8 \text{ Vp}) / (230 \text{ RMS} = 325.22 \text{ Vp}) = 0.054$
 $LS1 = (0.054 \times 0.054) \times 5 \text{ (SE IL PRIMARIO E' 5H)} = 14.58 \text{mH}$

SECONDARIO 0 - 6.3 V:
 $K = (6.3 \text{ V RMS} = 8.9 \text{ Vp}) / (230 \text{ RMS} = 325.22 \text{ Vp}) = 0.027$
 $LS1 = (0.027 \times 0.027) \times 5 \text{ (SE IL PRIMARIO E' 5H)} = 3.65 \text{mH}$



MIN = -11V
MAX = -58V

Rp=2000 Lp=50 UL=29 Cp=150p Cs=300p



```
.inc GU50.txt
.OPTIONS numdgt=16
.OPTIONS plotwinsize=0

.MODEL DKDZLV130 D      .MODEL DKDZLV150 D
+ IS=-8E-044E-15      + IS=-141.52E-15
+ RS=1.1171           + RS=1.1254
+ RSH=10928           + RSH=3.8525E-3
+ IEF=3.7E-056E-3    + IEF=16.965E-3
+ EG=1.0400           + EG=1.0800
+ CIO=43.085E-12      + CIO=43.085E-12
+ M=-.39187           + M=-.31196
+ VJ=-50855           + VJ=-50877
+ ISR=-3.1217E-12     + ISR=-9.8581E-12
+ NR=-2.1000          + NR=-3.2000
+ BV=130.30           + BV=130.30
+ IBV=10.000E-3       + IBV=10.000E-3
+ NBV=5.0000          + NBV=5.0000
+ TBV1=-.00098        + TBV1=-.00098
+ TRBF=0.0314         + TRBF=0.0314
+ TRSL=-0.0100        + TRSL=-0.0600
```

.tran 0 80s 78s
.ac dec 100 1 100k