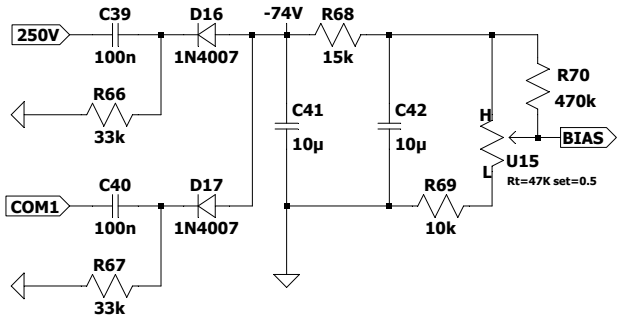
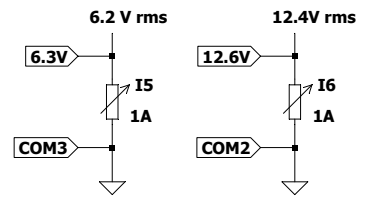


**SECONDARIO 0 - 250 V:**  
 $K = (260V\ RMS = 367.74\ Vp) / (230\ RMS = 325.22\ Vp) = 1.13$   
 $LS1 = (1.13 \times 1.13) \times 5\ (SE\ IL\ PRIMARIO\ E\ SH) = 6.38H$

**SECONDARIO 0 - 12.6 V:**  
 $K = (12.6V\ RMS = 17.6\ Vp) / (230\ RMS = 325.22\ Vp) = 0.054$   
 $LS1 = (0.054 \times 0.054) \times 5\ (SE\ IL\ PRIMARIO\ E\ SH) = 14.58\ mH$

**SECONDARIO 0 - 6.3 V:**  
 $K = (6.3\ V\ RMS = 8.8\ Vp) / (230\ RMS = 325.22\ Vp) = 0.027$   
 $LS1 = (0.027 \times 0.027) \times 5\ (SE\ IL\ PRIMARIO\ E\ SH) = 3.65\ mH$



MIN = -11V  
MAX = -58V

Rp=2000 Lp=50 UL=29 Cp=150p Cs=300p

