

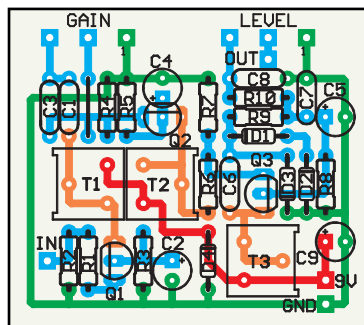
# English 30 OverDrive

Desenvolvido por: Emilio - Diy Italia

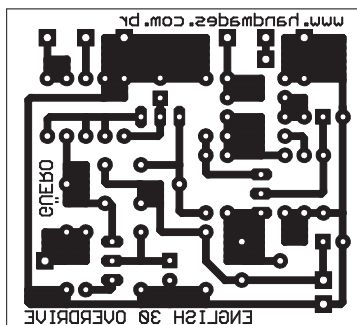
Layout por: Güero 2.0

Baseado no INPUT STAGE do VOX AC30. A tensão no Dreno dos FETS deve ser próxima a 4,5V.

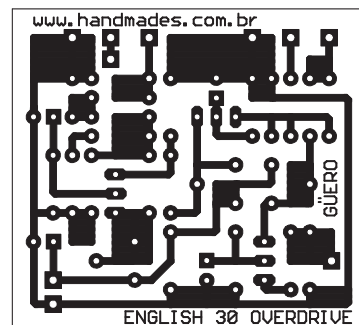
Layout



Para transferir



Layout invertido



## Resistores

R1	33K
R2	1M
R3	1K5
R4	1M
R5	1K5
R6	1K5
R7	1M
R8	47R
R9	15K
R10	15K

## Capacitores

C1	47n
C2	22uF
C3	1n
C4	22uF
C5	22uF
C6	15n
C7	2n2
C8	2n2
C9	100uF

## Diodos

D1	4148
D2	4148
D3	4148
D4	4001

## Trimpots

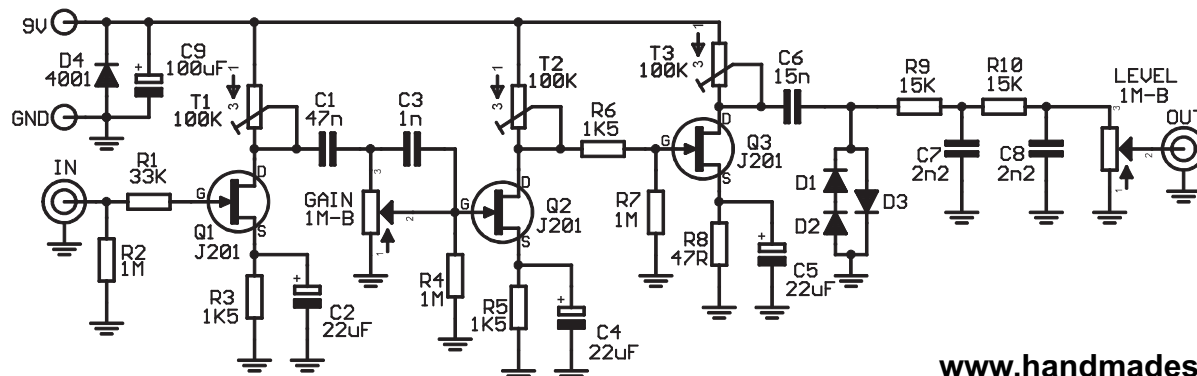
T1	100K
T2	100K
T3	100K

## Pots

GAIN	1M-B
LEVEL	1M-B

## Transistores

Q1	J201
Q2	J201
Q3	J201



www.handmades.com.br