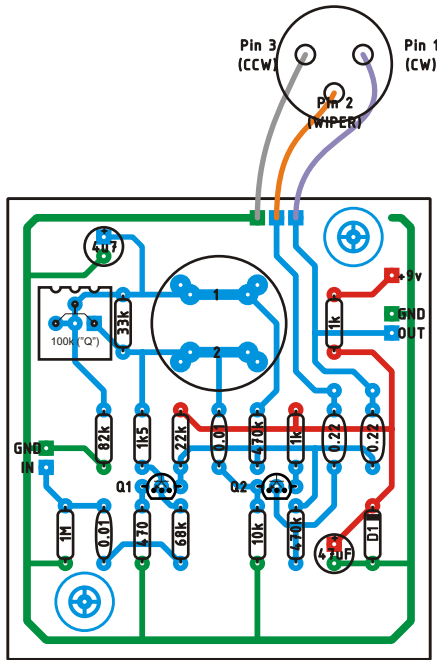


Build the standard wah circuit, mounting pads match regular wah enclosure. There's the option of using a trimpot instead of the 33k 'q' resistor (use one or the other, not both). Offboard wiring except for the pot is not shown, check offboard wiring project at [tonepad](http://tonepad.com). Trademarks remain property of their owners. Visit [tonepad.com](http://tonepad.com) for more!



LAYOUT

## Parts List

### Resistors

- 1 - 470 ohm
- 2 - 1k
- 1 - 1K5 (1.5k)
- 1 - 10k
- 1 - 22k
- 1 - 33k or 100k trimpot
- 1 - 68k
- 1 - 82k
- 2 - 470k
- 1 - 1M

### Capacitors

- 2 - 0.01 $\mu$ F
- 2 - 0.22 $\mu$ F
- 1 - 4.7 $\mu$ F
- 1 - 47 $\mu$ F

### Pots

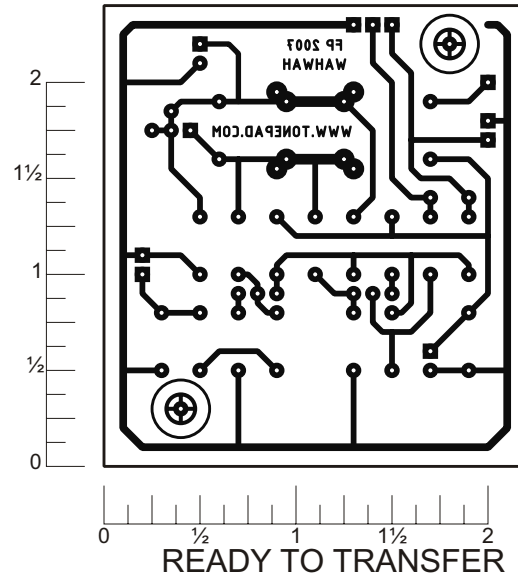
- 1 - Wah pot

### Transistors

- Q1 - MPSA18
- Q2 - MPSA18

### Diodes

- 1 - 1N914



READY TO TRANSFER

