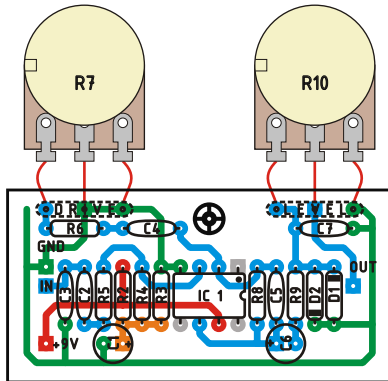


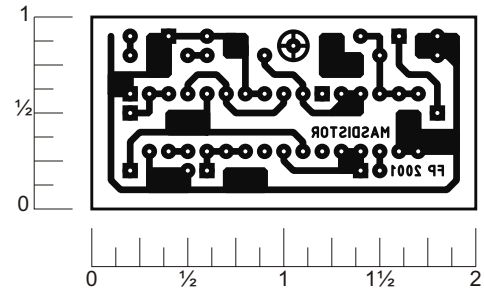
# MAS DISTORTION

Rev.4.Dec.8.2005

You can build either the MXR Distortion+ or the DOD Overdrive 250 in this board. Try different kinds of diodes for clipping. These circuits are very similar, so much that they can be constructed around the same printed circuit board. Use the parts list to substitute with the values for the circuit you choose to build. Off board components except for the potentiometers are not shown on the layout. Registered trademarks are property of their owners.



LAYOUT



READY TO TRANSFER

## MXR PARTS LIST

### Resistors

R1 -  
R2 - 1M  
R3 - 1M  
R4 - 1M  
R5 - 10k  
R6 - 4k7 (4.7k)  
R7 - 500k Rev-log. pot.  
R8 - 1M  
R9 - 10k  
R10 - 50k log. pot.

### Capacitors

C1 - 1 $\mu$ F  
C2 - 0.01 $\mu$ F  
C3 - 0.001 $\mu$ F  
C4 - 0.047 $\mu$ F  
C5 - 10pF  
C6 - 1 $\mu$ F  
C7 - 0.001 $\mu$ F

### ICs

IC1 - 741

## DOD PARTS LIST

### Resistors

R1 -  
R2 - 20k  
R3 - 20k  
R4 - 1M  
R5 - 10k  
R6 - 47k  
R7 - 500k Rev. Log. pot.  
R8 - 1M  
R9 - 10k  
R10 - 100k log. pot

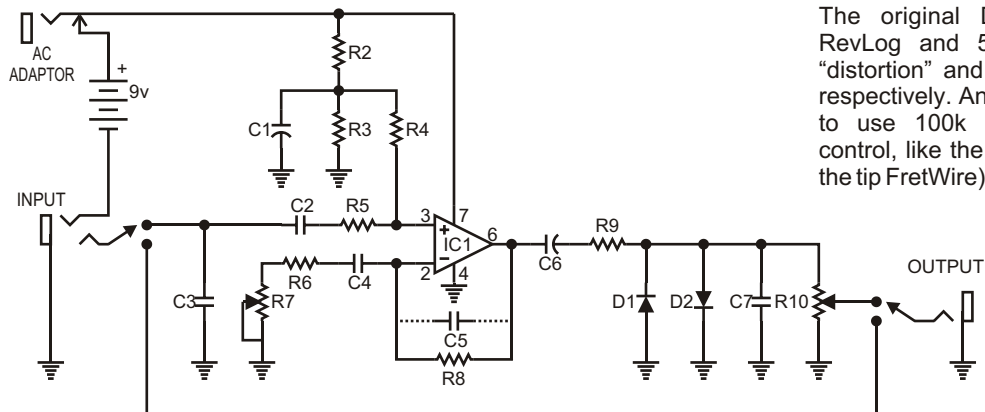
### Capacitors

C1 - 10  $\mu$ F  
C2 - 0.01  $\mu$ F  
C3 -  
C4 - 0.05  $\mu$ F  
C5 -  
C6 - 10  $\mu$ F  
C7 - 0.001  $\mu$ F

### ICs

IC1 - 741

## Schematic



### NOTES:

The original Dist+ used 500k RevLog and 50k Log pots for "distortion" and "volume" controls respectively. An advisable mod is to use 100k Log for "volume" control, like the DOD. (Thanks for the tip FretWire)