

Fig.1- POWER SUPPLY +13.8V 5A

13.8V low voltage transformer components :

R1=270R 1/4W 2%

C4-5=10uF 25V

T1=220Vac/15VAC – 8A Mains Transformer

TR1=4k7 (Multiturn)

D1-2=1N4002 (1A/100V)

S1=2 Pole Single Throw Mains Switch

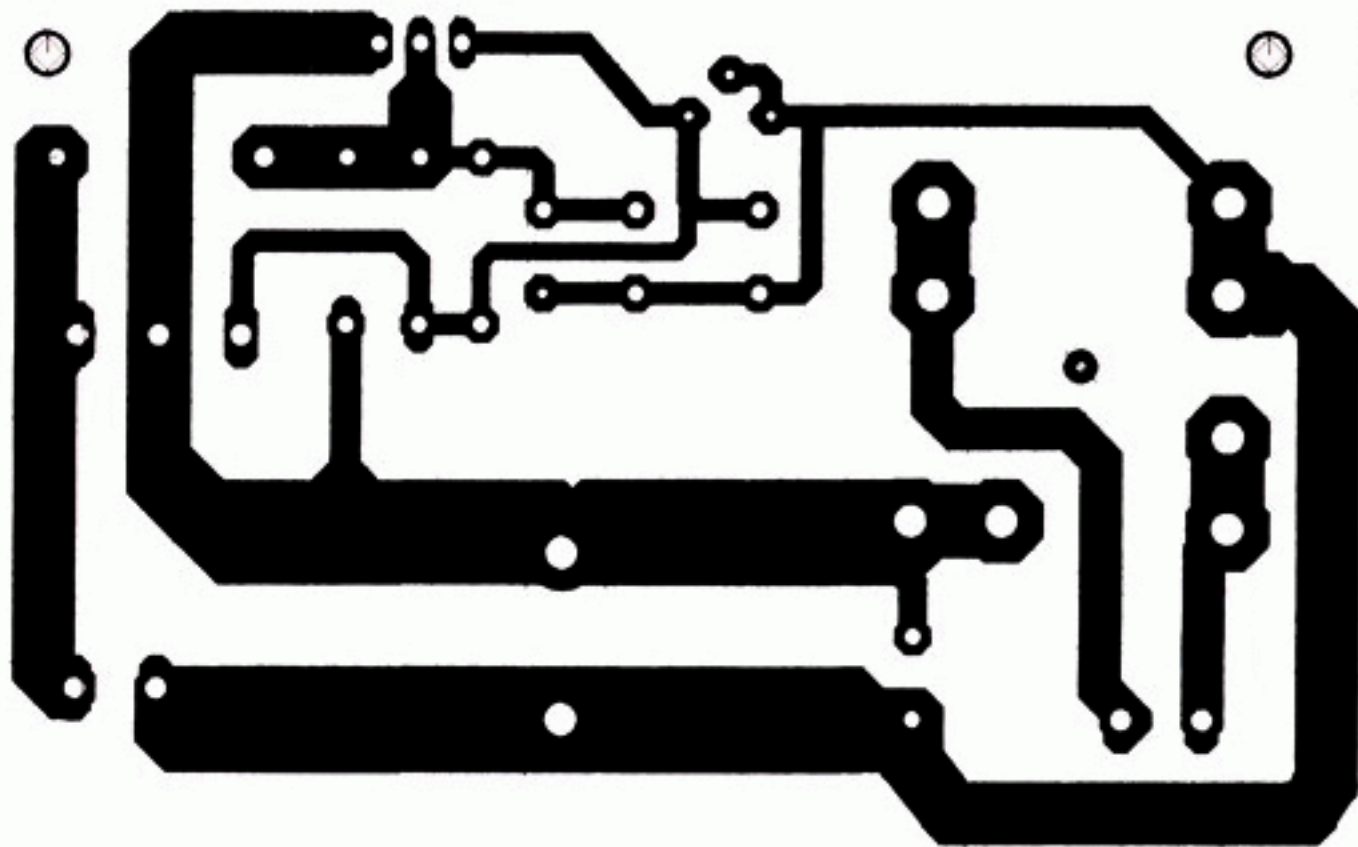
C1=10000uF 40V

C2-3=100 nF 100V Polyester

B1=25A Bridge Rectifier

F1=250mA Fuse

IC1= LM338



Sam Electronic Circuits
<Bottom side>