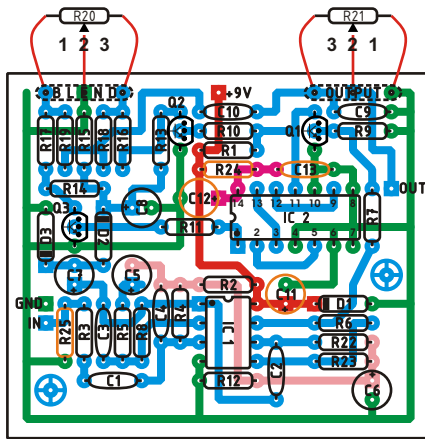
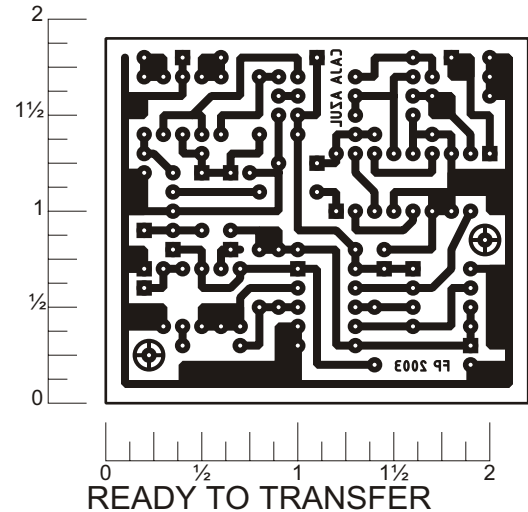


MXR Blue Box workalike. Off board components except for the potentiometers are not shown on the layout. Trademarks are property of their owners.



LAYOUT



Parts List

Resistors

R1 - 10k	R14 - 56k
R2 - 56k	R15 - 56k
R3 - 150k	R16 - 56k
R4 - 1M	R17 - 56k
R5 - 1k	R18 - 56k
R6 - 1M	R19 - 56k
R7 - 56k	R20 - 50k Log Pot
R8 - 470k	R21 - 50k Log Pot
R9 - 10k	R22 - 56k
R10 - 1M	R23 - 10k
R11 - 1M	R24 - 330ohm
R12 - 56k	R25 - 2.2M
R13 - 56k	

Capacitors

C1 - 0.01 μ F
C2 - 0.05 μ F
C3 - 300pF
C4 - 0.001 μ F
C5 - 10 μ F
C6 - 10 μ F
C7 - 1 μ F
C8 - 1 μ F
C9 - 0.01 μ F
C10 - 0.05 μ F
C11 - 100 μ F
C12 - 100 μ F
C13 - 0.1 μ F

ICs

IC1 - 4558
IC2 - CD4013

Diodes

D1 - 1N914
D2 - 1N914
D3 - 1N914

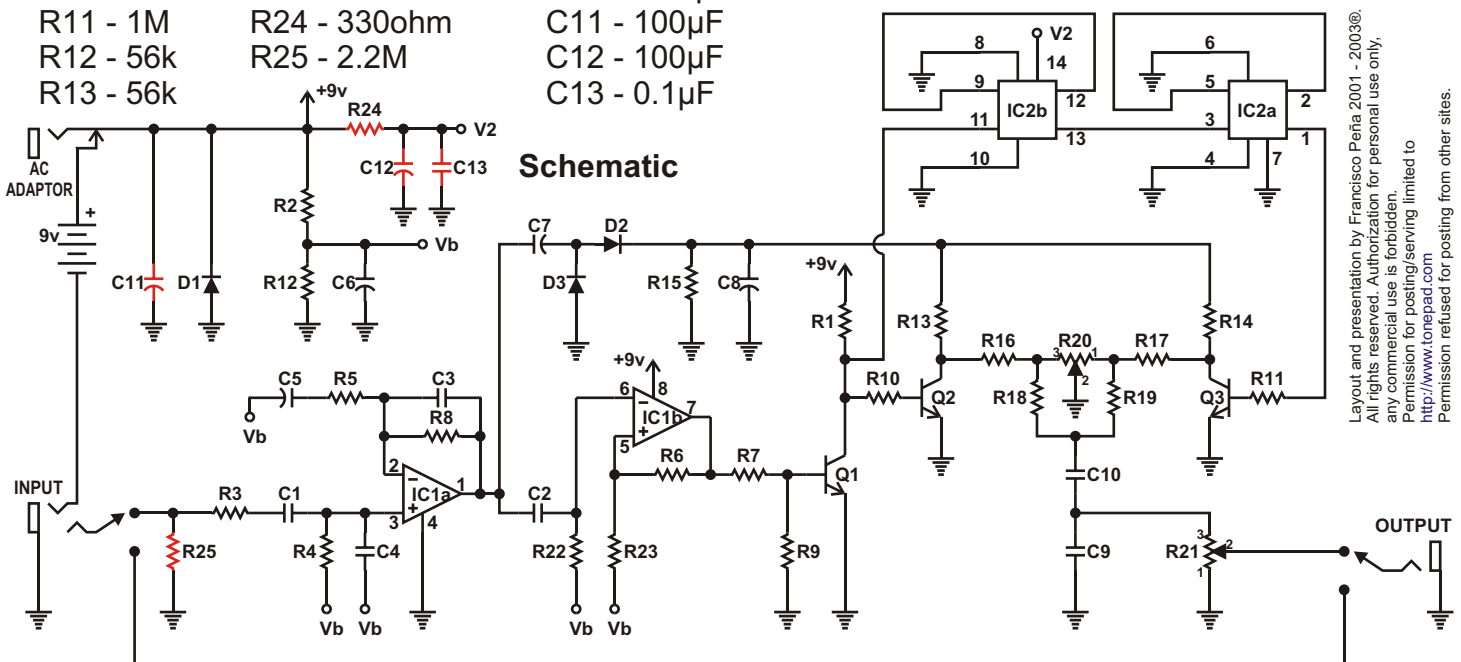
Transistors:

Q1 - 2N3904
Q2 - 2N3904
Q3 - 2N3904
Originals were 2SC1849
Reissue uses MPSA18
2N5088 can be used too

NOTES:

Parts in RED are not in the 1977 factory schematic.

R24 is a jumper in 1977 version, leave all other parts in RED empty.



Layout and presentation by Francisco Peña 2001 - 2003©.
All rights reserved. Authorization for personal use only.
any commercial use is forbidden.
Permission for posting/serving limited to
<http://www.tonepad.com>
Permission refused for posting from other sites.