

VACUUM TUBE SOCKET & TUBE SHIELD

- ***9 pin Vacuum tube socket & shield 52~55***
- ***8 pin Vacuum tube socket & retainer 56~58***



VACUUM TUBE SOCKET

BELTON

(VT9 SERIES)

CAT. NO.: BVT9-1

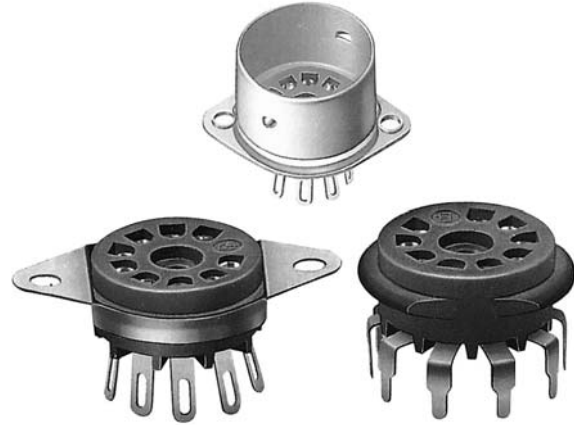
9 Pin Miniature Conventional Wiring and PCB Type Socket

Features

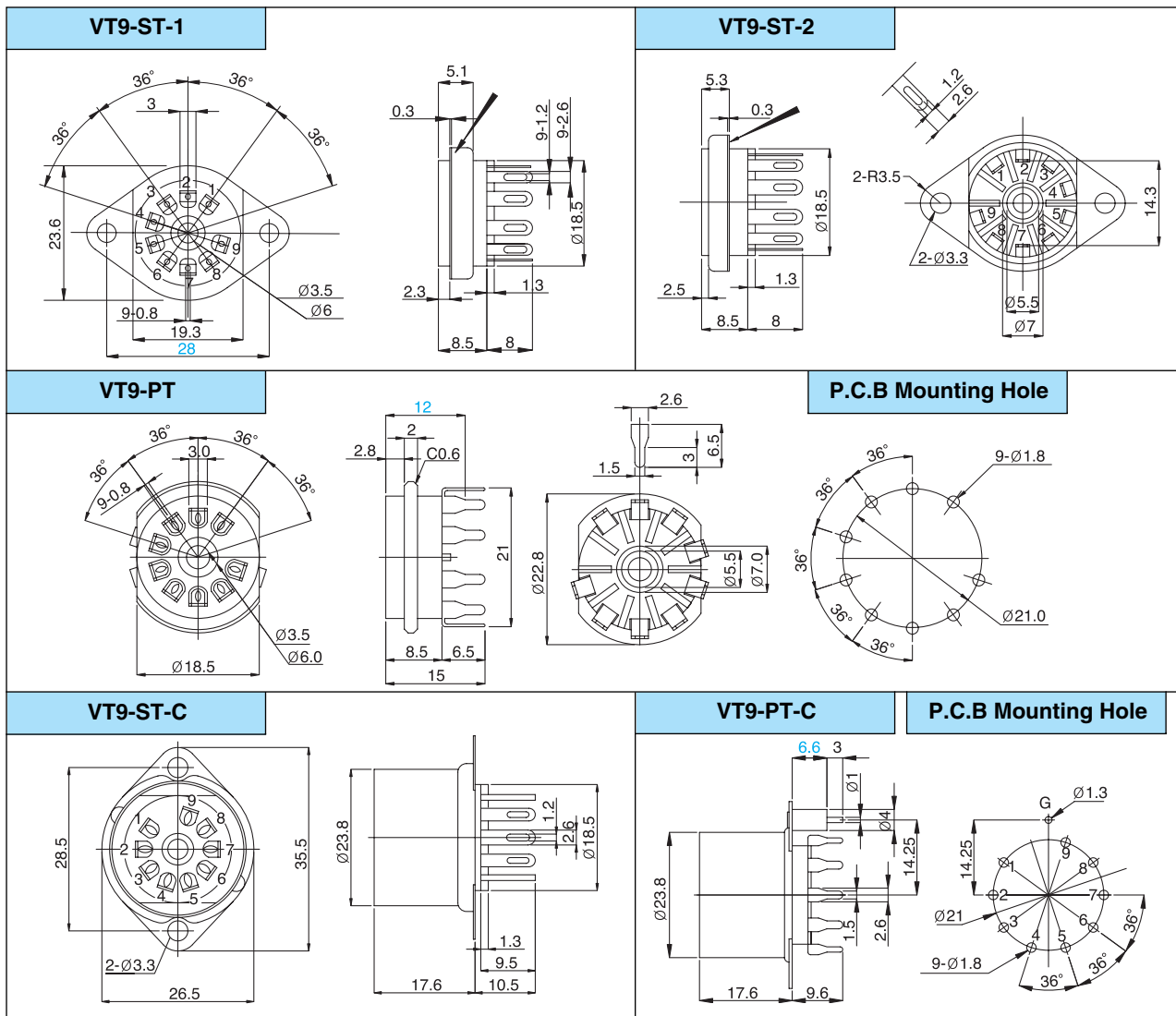
- With panel saddle mounting
- Phosphorous bronze pin terminal with tin plating
- Glassfiber filled PPS Insulating material
- Easy mount with collar attached socket

Applications

- Applicable to all types of electric and electronic equipments using vacuum tube



Dimensions



Belton Engineering Co., Ltd.

Unit 1208, Daerung Techno town 8,
481-11, Gasan-Dong,
Geumcheon-Gu, Seoul, Korea

TEL : (822)2163-0060~0065
FAX : (822)2163-0066
E-mail : belton@unitel.co.kr



VACUUM TUBE SOCKET

BELTON

(VT9 SERIES)

CAT.NO.: BVT9-2

Specially designed 9 pin vacuum tube socket for auto-wave solder

Features

- Safety attachment with 3 positions of mounting pin
- Easy mount with the precise designed tube pins
- Glassfiber filled PPS insulating material

Applications

- Applicable to all types of electric and electronic equipments using vacuum tube

PATENT



REVERBERATION
UNIT

ROTARY
SWITCH

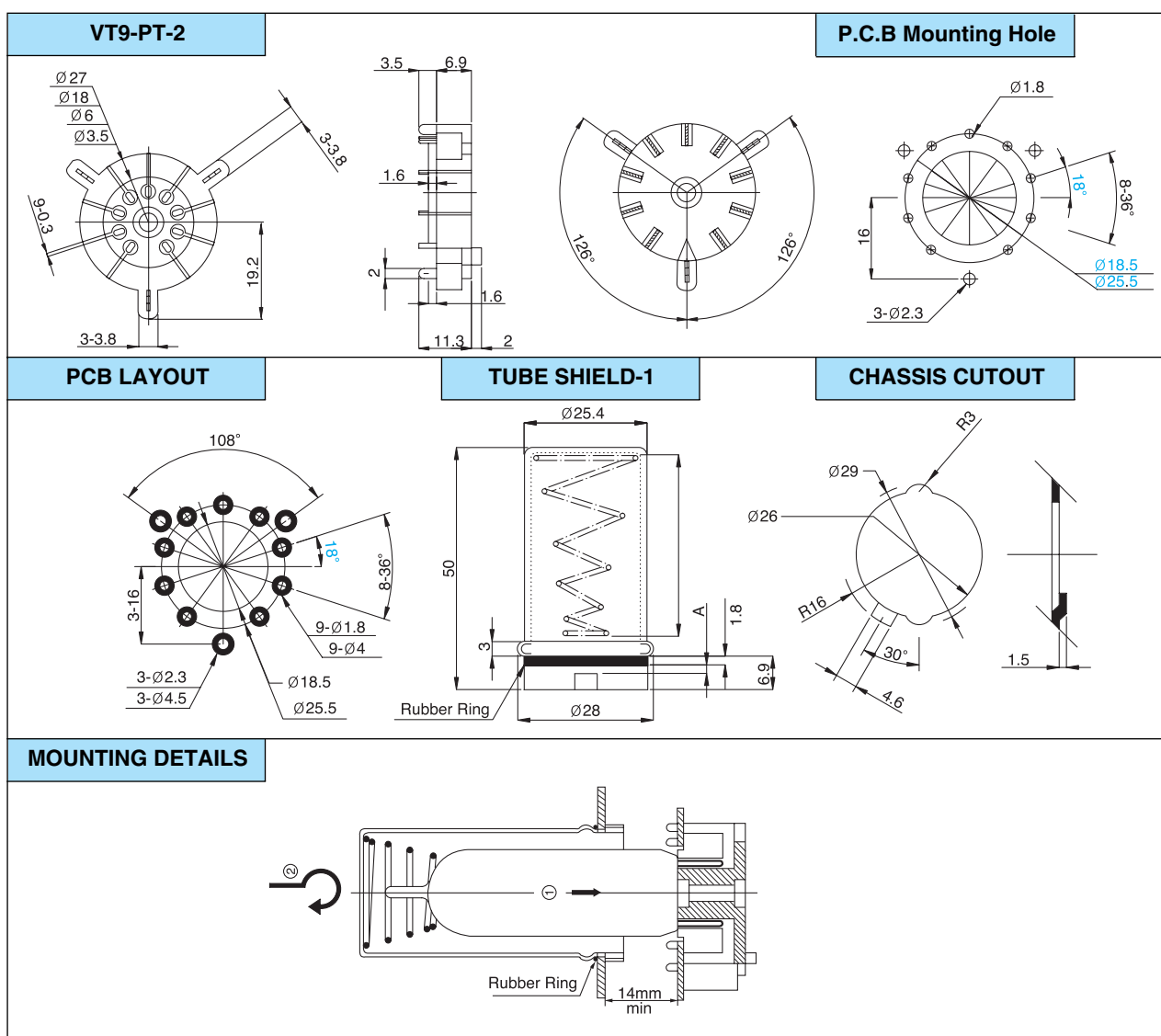
ENCODER
SWITCH

VACUUM TUBE
SOCKET & SHIELD

POWER ENTRY

JACK & XLR
SOCKET

Dimensions



Belton Engineering Co., Ltd.

Unit 1208, Daerung Techno town 8,
481-11, Gasan-Dong,
Geumcheon-Gu, Seoul, Korea

TEL : (822)2163-0060~0065
FAX : (822)2163-0066
E-mail : belton@unitel.co.kr



Precise designed tube shield and tube retainer for 8 & 9 pin socket

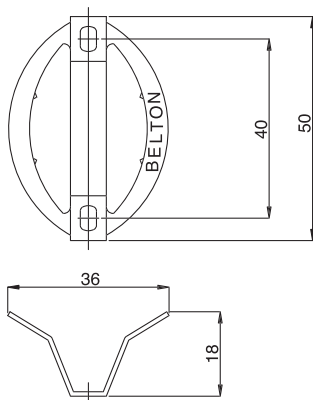
Applications

- Tube retainer-1 ; for use on the standard 8 pin socket(VT8-PT or ST)
- Tube retainer-2 ; for the VT8-PT-2 socket (special design for 8 pin)
- Tube shield-1 ; for the VT9-PT-2 socket (special design for 9 pin)
- Tube shield-2 ; for the standard 9 pin socket (VT9-ST or PT)



Dimensions

TUBE RETAINER-1

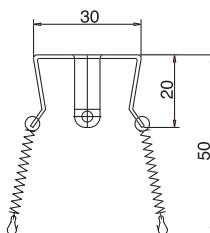


- Materials ; Spring plate with Ni plating

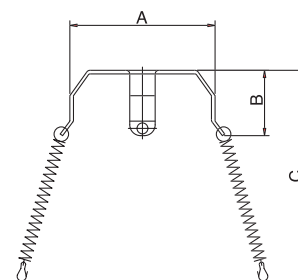
TUBE RETAINER-2

**Available to change the spring length by tube size

Tube retainer #2-1



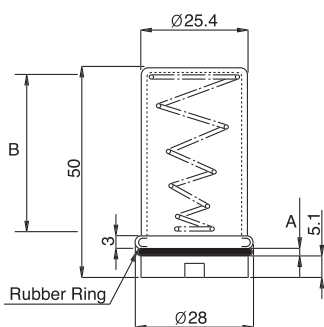
Tube retainer #2-2



- Materials ; Steel plate with Ni plating and natural coil spring

TUBE SHIELD-1

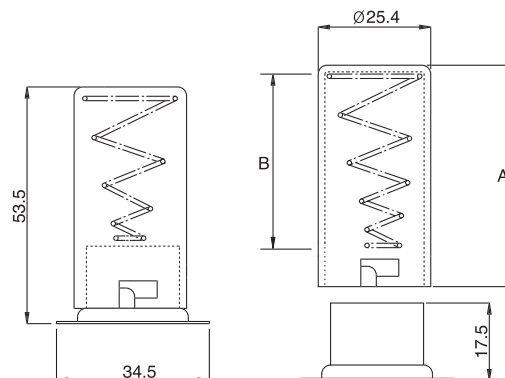
Rubber Thick. (A)	Spring Leng. (B)
1.8mm	50mm
2.5mm	26mm



- Materials;Aluminum sleeve with natural coil spring

TUBE SHIELD-2

CAN Height (A)	Spring Leng. (B)
40mm	26mm
50mm	20mm



- Materials;Aluminum sleeve with natural coil spring



Belton Engineering Co., Ltd.

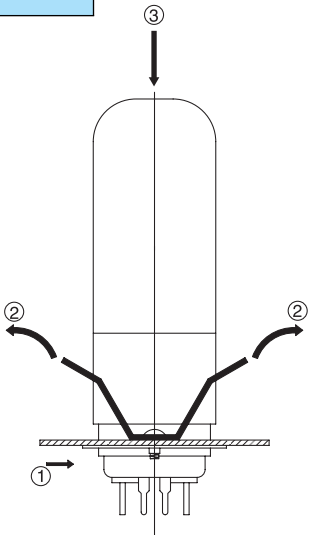
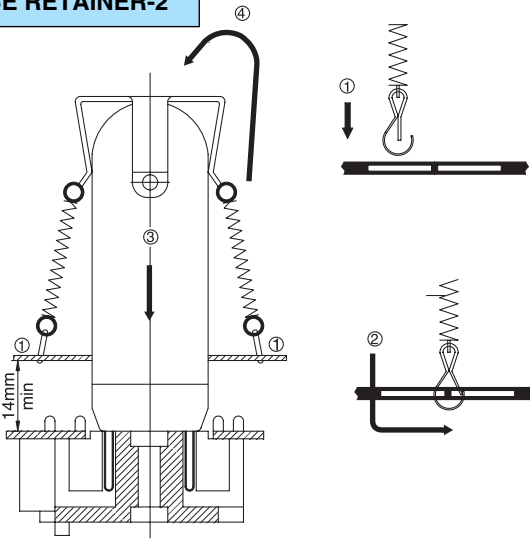
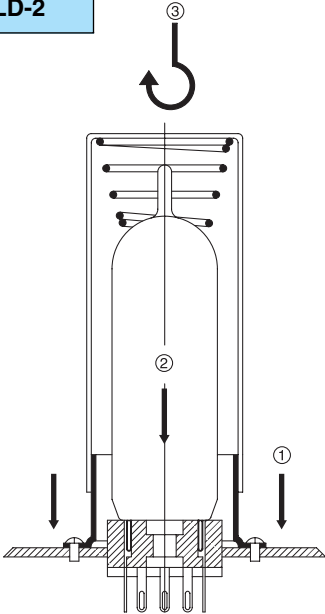
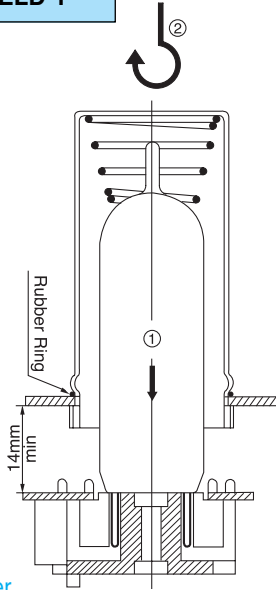
Unit 1208, Daerung Techno town 8,
481-11, Gasan-Dong,
Geumcheon-Gu, Seoul, Korea

TEL : (822)2163-0060~0065
FAX : (822)2163-0066
E-mail : belton@unitel.co.kr



Proposed mounting method of tube socket with tube shield

Progress order

TUBE RETAINER-1	TUBE RETAINER-2
 <p>Progress order</p> <ol style="list-style-type: none">1. Build tube socket on the chassis2. Spread out the wing of tube retainer-13. Insert vacuum tube into the socket	 <p>Progress order</p> <ol style="list-style-type: none">1. Insert hook to the chassis hole2. Push and hook up the hooks to the chassis3. Insert the vacuum tube into the socket4. Pull up tube retainer-2 and cap it on the top of tube
TUBE SHIELD-2	TUBE SHIELD-1
 <p>Progress order</p> <ol style="list-style-type: none">1. Build collar on the chassis2. Insert the tube into the socket3. Cap and push the tube shield-2 and turn right till stop	 <p>Progress order</p> <ol style="list-style-type: none">1. Insert vacuum tube into the socket2. Cap and push the tube shield-1 to the bottom and turn right till stop

REVERBERATION UNIT
ROTARY SWITCH
ENCODER SWITCH
VACUUM TUBE SOCKET & SHIELD
POWER ENTRY
JACK & XLR SOCKET





VACUUM TUBE SOCKET

BELTON

(VT8 SERIES)

CAT. NO.: BVT8-1

High Insulated 8 Pin Vacuum Tube Socket

Features

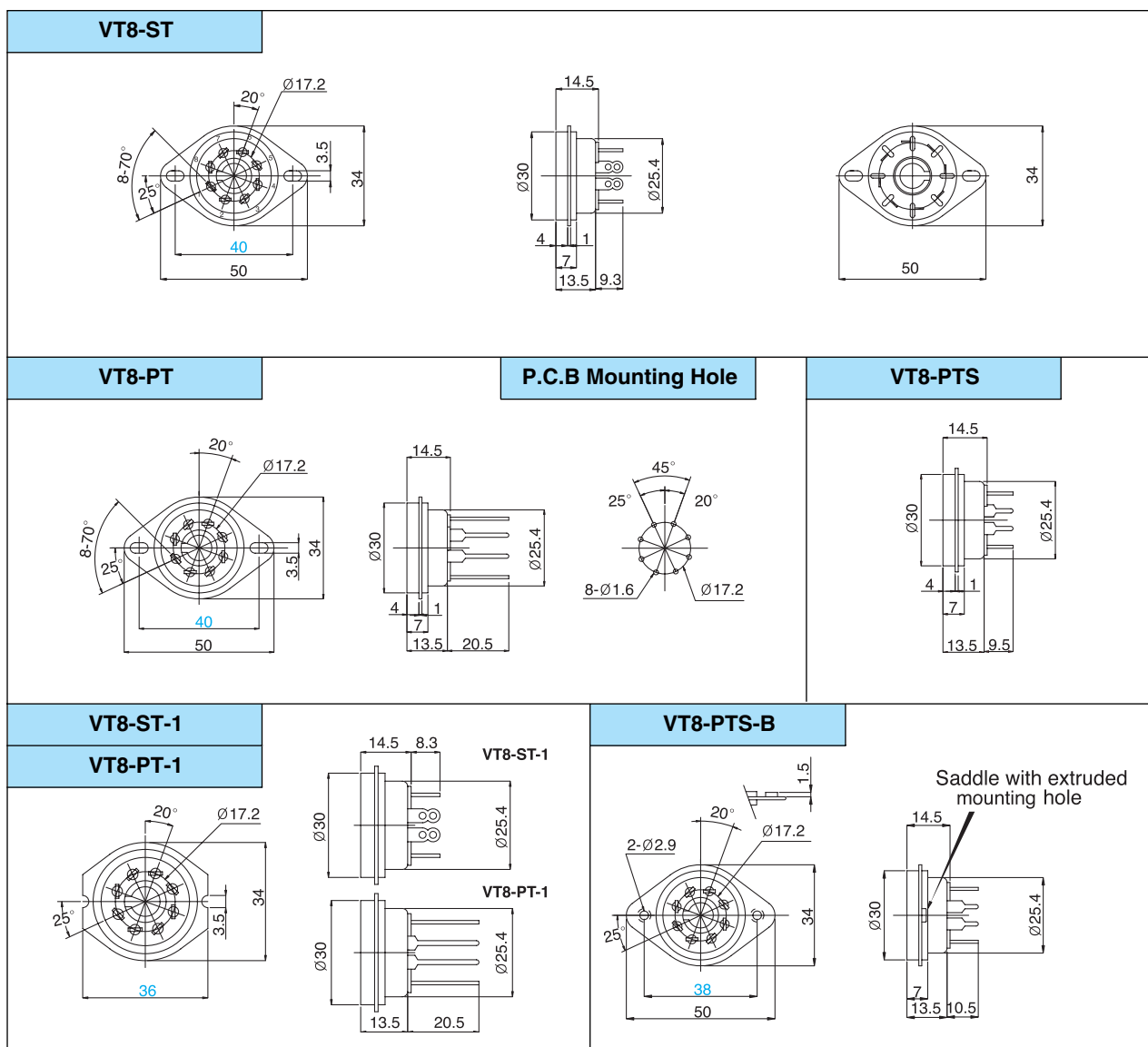
- With panel saddle mounting
- Easy mount with the saddle of **extruded screw** hole
- Phosphorus bronze terminal pin with solder plating
- Glassfiber filled PPS Insulating material

Applications

- Applicable to all types of electric and electronic equipments using vacuum tube and relay



Dimensions



Belton Engineering Co., Ltd.

Unit 1208, Daerung Techno town 8,
481-11, Gasan-Dong,
Geumcheon-Gu, Seoul, Korea

TEL : (822)2163-0060~0065
FAX : (822)2163-0066
E-mail : belton@unitel.co.kr



VACUUM TUBE SOCKET

BELTON

(VT8 SERIES)

AT. NO.: BTL-01

Easy mounting 8 pin vacuum tube socket without additional fixing bolt and nut

Features

- Fixing terminals on the P.C.B instead of bolt & nut
- Phosphorous bronze terminal pin with Sn plating
- Glassfiber filled PPS insulating material

Applications

- Applicable to all types of electric and electronic equipments using vacuum tube and relay

Dimensions

NEW



PATENT

REVERBERATION
UNIT

ROTARY
SWITCH

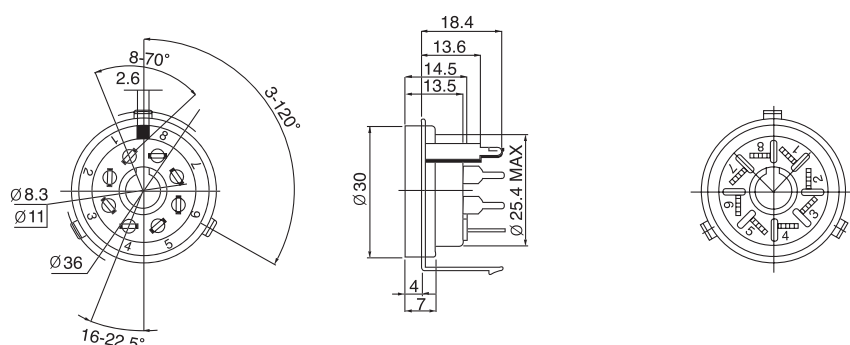
ENCODER
SWITCH

VACUUM TUBE
SOCKET & SHIELD

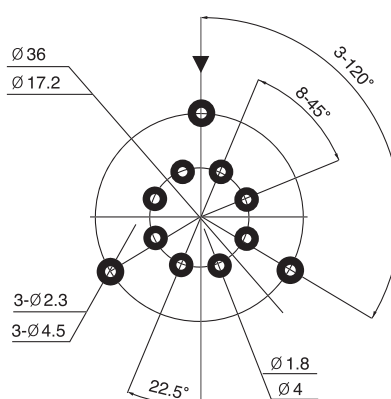
POWER ENTRY

JACK & XLR
SOCKET

VT8-PTL-01



P.C.B PATTERN



Belton Engineering Co., Ltd.

Unit 1208, Daerung Techno town 8,
481-11, Gasan-Dong,
Geumcheon-Gu, Seoul, Korea

TEL : (822)2163-0060~0065
FAX : (822)2163-0066
E-mail : belton@unitel.co.kr



VACUUM TUBE SOCKET

BELTON

(VT8 SERIES)

CAT.NO.: BVT8-2

Specially designed 8 pin vacuum tube socket for auto-wave solder

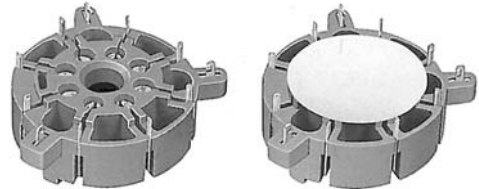
Features

- Safety attachment with 3 positions of mounting pins
- Easy mount with the precise designed tube pins
- Glassfiber filled PPS insulating material

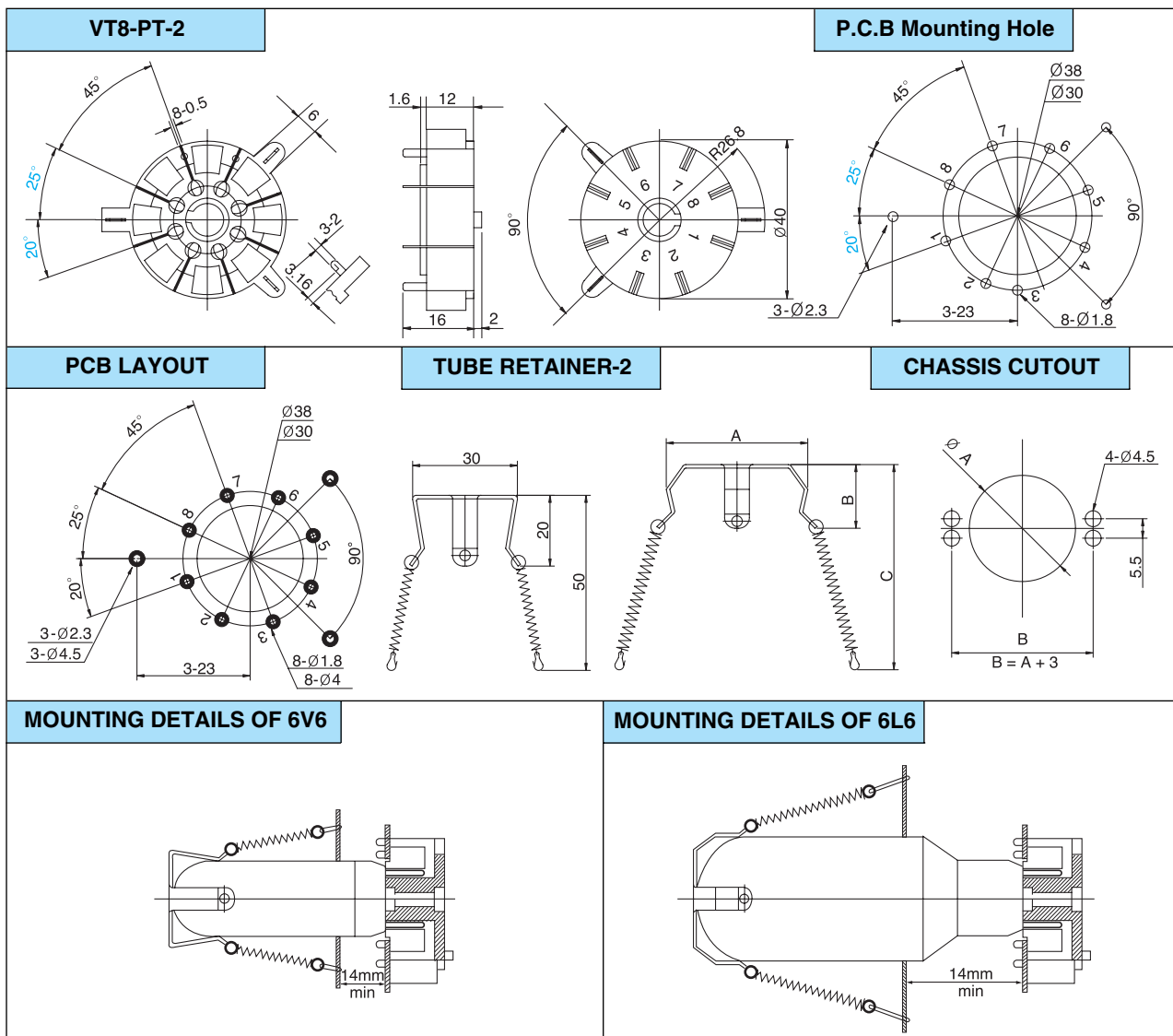
Applications

- Applicable to all types of electric and electronic equipments using vacuum tube

PATENT



Dimensions



Belton Engineering Co., Ltd.

Unit 1208, Daerung Techno town 8,
481-11, Gasan-Dong,
Geumcheon-Gu, Seoul, Korea

TEL : (822)2163-0060~0065
FAX : (822)2163-0066
E-mail : belton@unitel.co.kr