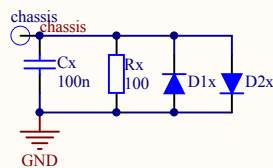
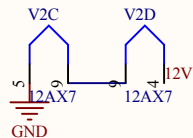
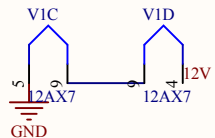
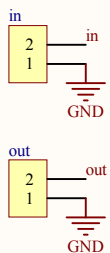
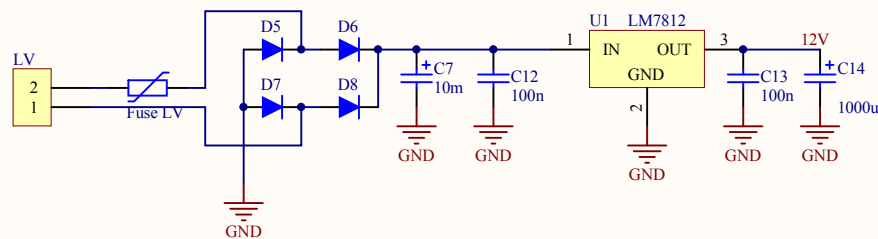
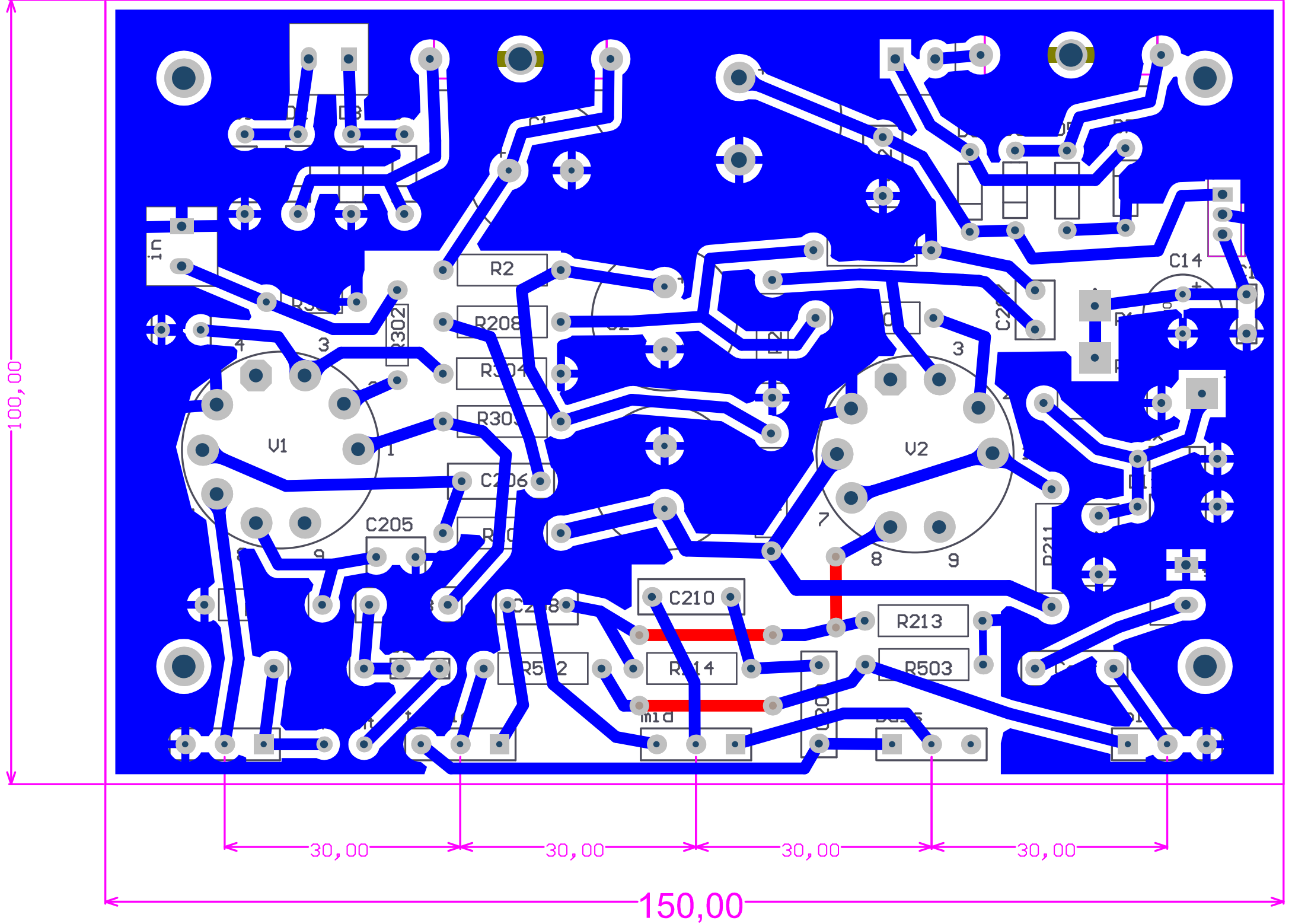


l'ultimo triodo beve 1,5mA (da schema)  
 assumendo circa 1mA per V2A e 1mA per V1B  
 dal nodo A passano circa 3,5mA (verso C) e 0,5mA verso V1A



based on "anvil new" schematic

Title		
Size A4	Number	Revision
Date:	18/09/2011	Sheet of
File:	D:\Programmi\...\Rhythm_simple.SchDoc	Drawn By:



# Bill of Materials

Bill of Materials For Project [Rhythm\_Simple.PrjPCB] (No PCB Document Selected)

Source Data From: Rhythm\_Simple.PrjPCB  
 Project: Rhythm\_Simple.PrjPCB  
 Variant: None

Creation Date: 18/09/2011 18:41:14  
 Print Date: 40804 40804,77872

Footprint	Comment	LibRef	Designator	Description	Quantity
Pot (5,08mm)	500kA	Potentiometer	bass, gain, vol	Potentiometer	3
Jumper	Jumper	Jumper	bright	Connettore a filo	1
5.08mm					
Panasonic ED 47uF 450V	Panasonic ED 47uF 450V	Panasonic ED 47uF 450V	C1, C2, C?2a	Panasonic ED 47uF 450V	3
Kendeil 10mF 25V	Kendeil 10mF 25V	Kendeil 10mF 25V	C7	Kendeil 10mF 25V	1
Wima MKP4 100nF 250V (7.5mm)	Wima MKT 100nF 63V	Wima MKT 100nF 63V	C12, C208	Wima MKT 100nF 63V	2
Wima MKT 100nF 63 V (5mm)	Wima MKT 100nF 63V	Wima MKT 100nF 63V	C13, C204	Wima MKT 100nF 63V	2
Panasonic FC 1000uF 50V	Panasonic FC 1000uF 50V	Panasonic FC 1000uF 50V	C14	Panasonic FC 1000uF 50V	1
Wima MKP4 22nF 400V (10mm)	Wima MKP4 22nF 400V	Wima MKP4 22nF 400V	C203, C206, C209, C210, Cout	Wima MKP4 22nF 400V	5
MKT 1uF 63V (5mm)	MKT 1uF 63V (5mm)	MKT 1uF 63V (5mm)	C205, C207, C303	MKT 1uF 63V (5mm)	3
Pin0	Pin0	Pin0	chassis	Connettore a filo	1
Wima MKP4 100nF 250V (7.5mm)	Wima MKP4 100nF 250V	Wima MKP4 100nF 250V	Cx	Wima MKP4 100nF 250V	1
DIODE 10mm	1N1448	1N1448	D1, D1x, D2, D2x, D3, D4, D5, D6, D7, D8	High Conductance Fast Diode	10
Fuse Holder Moresetto 2 poli	Fuse Holder Morsetto 2 poli	Fuse Holder Morsetto 2 poli	Fuse HV, Fuse LV	Fuse Holder	2
Pot (5,08mm)	25kB	Potentiometer	HV, in, LV, out	Header, 2-Pin, Right Angle	4
			mid	Potentiometer	1
Pin1	Pin1	Pin1	P1, P2	Connettore a filo	2
R Potenza	R potenza	R potenza	R2, R2a, R206, R207, R208, R209, R210, R211, R212, R213, R214, R303, R304, R502, R503, Rx	R Potenza	16
CMF55	CMF-55	CMF-55	R205, R301, R302	Resistor	3
Pot (5,08mm)	250kB	Potentiometer	treble	Potentiometer	1
T03B	LM7812	LM7805CT	U1	3-Terminal Positive Regulators	1
NOVAL_NAF	12AX7	12AX7	V1, V2	12AX7	2
					65

Approved	Notes