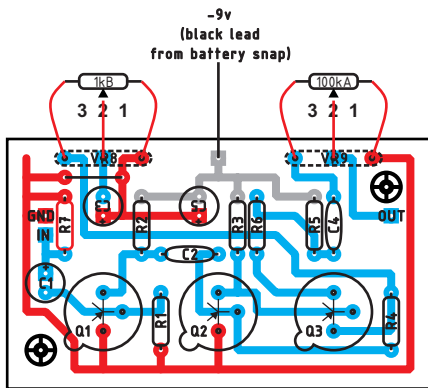


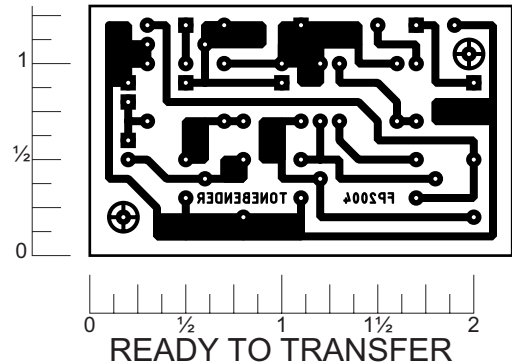
TONE BENDER MKII

Rev.1.Jan.12.2004

Build the ToneBender Professional MKII on this board. This circuit uses positive ground, keep that in mind when using with other pedals (don't share the same power supply with negative ground pedals). Off board components except for the potentiometers are not shown on the layout. Trademarks are property of their owners.



LAYOUT



READY TO TRANSFER

Parts List

Resistors

R1 - 100k
R2 - 10k
R3 - 47k
R4 - 100k
R5 - 1k
R6 - 8k2 (8.2k)
R7 - 2M2 (2.2M)

Capacitors

C1 - 4.7 μ F
C2 - 0.1 μ F
C3 - 4.7 μ F
C4 - 0.01 μ F
C5 - 47 μ F

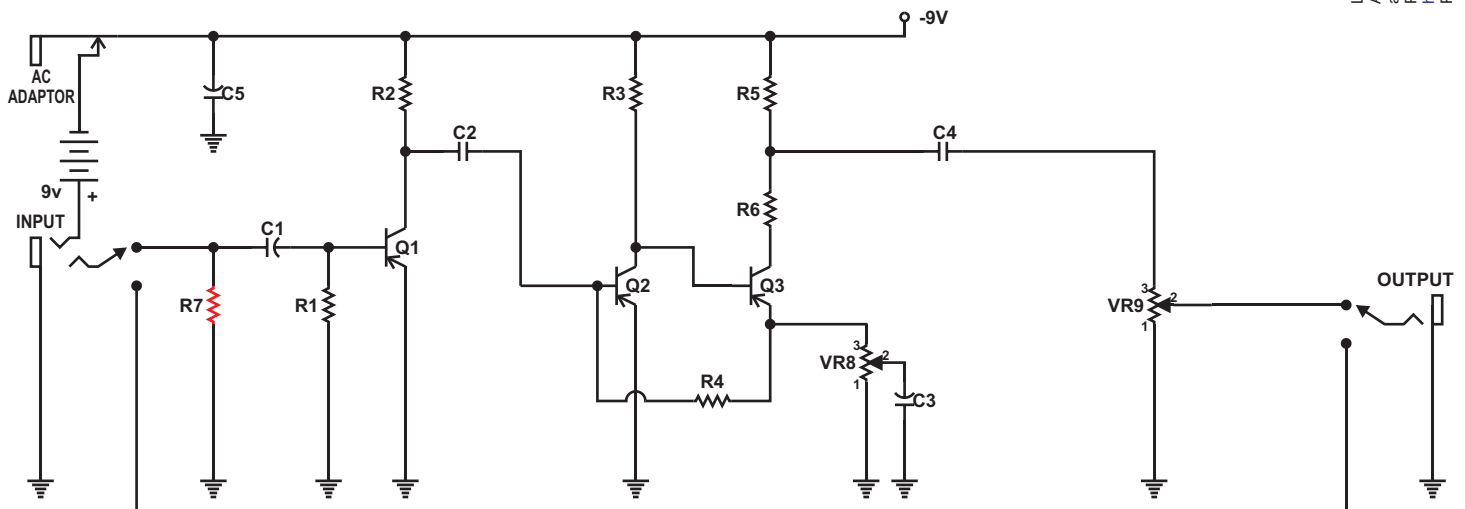
Pots

VR8 - 1k lin.
VR9 - 100k log.

Transistors

Q1 - PNP Ge
Q2 - PNP Ge
Q3 - PNP Ge

Schematic



Layout and presentation© by Francisco Peña 2001-2004®.
All rights reserved. Authorization for personal use only.
any commercial use is forbidden.
Permission for posting/serving limited to
<http://www.tonepad.com>
Permission refused for posting from other sites.