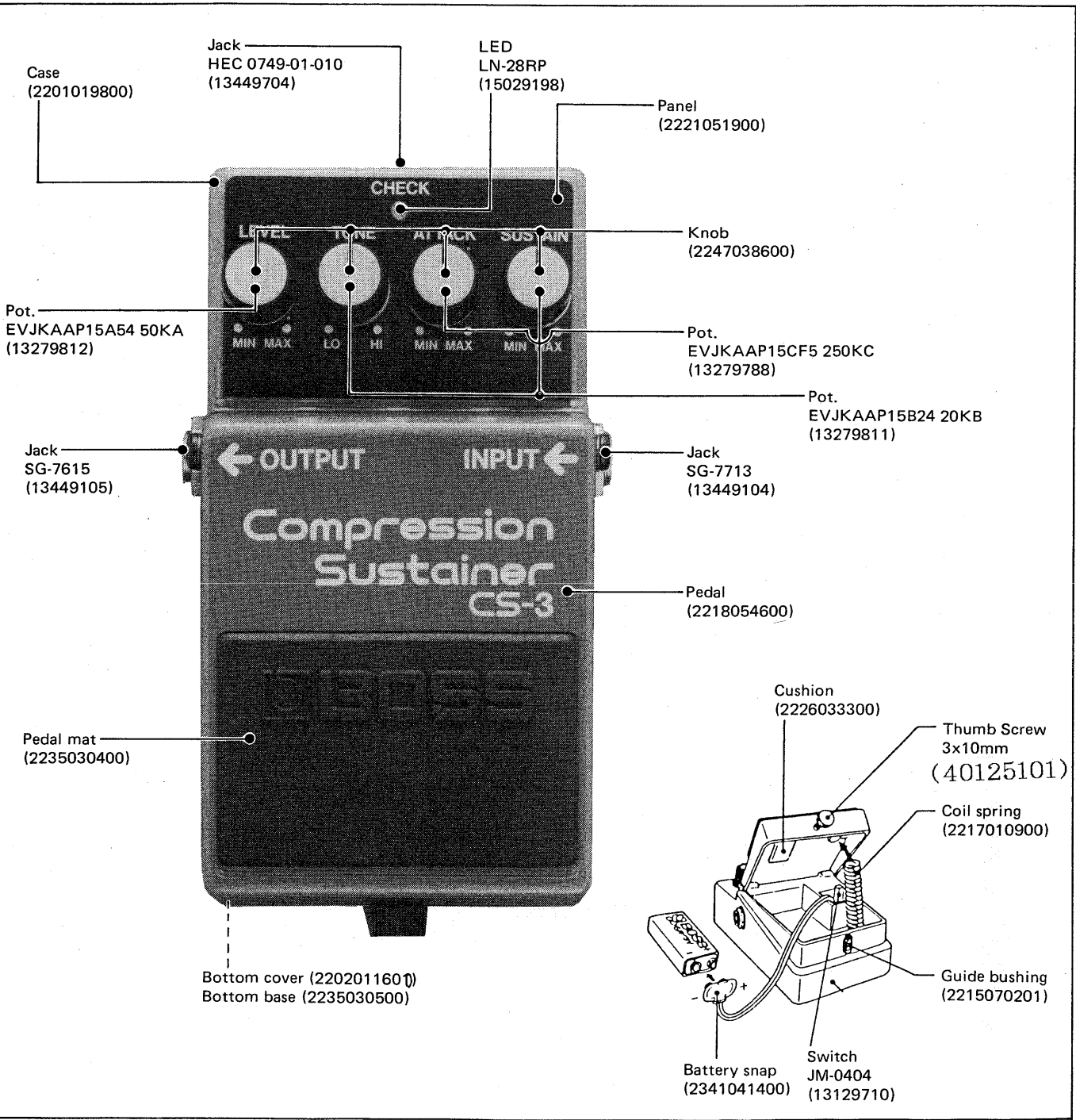


BOSS CS-3 SERVICE NOTES

First Edition

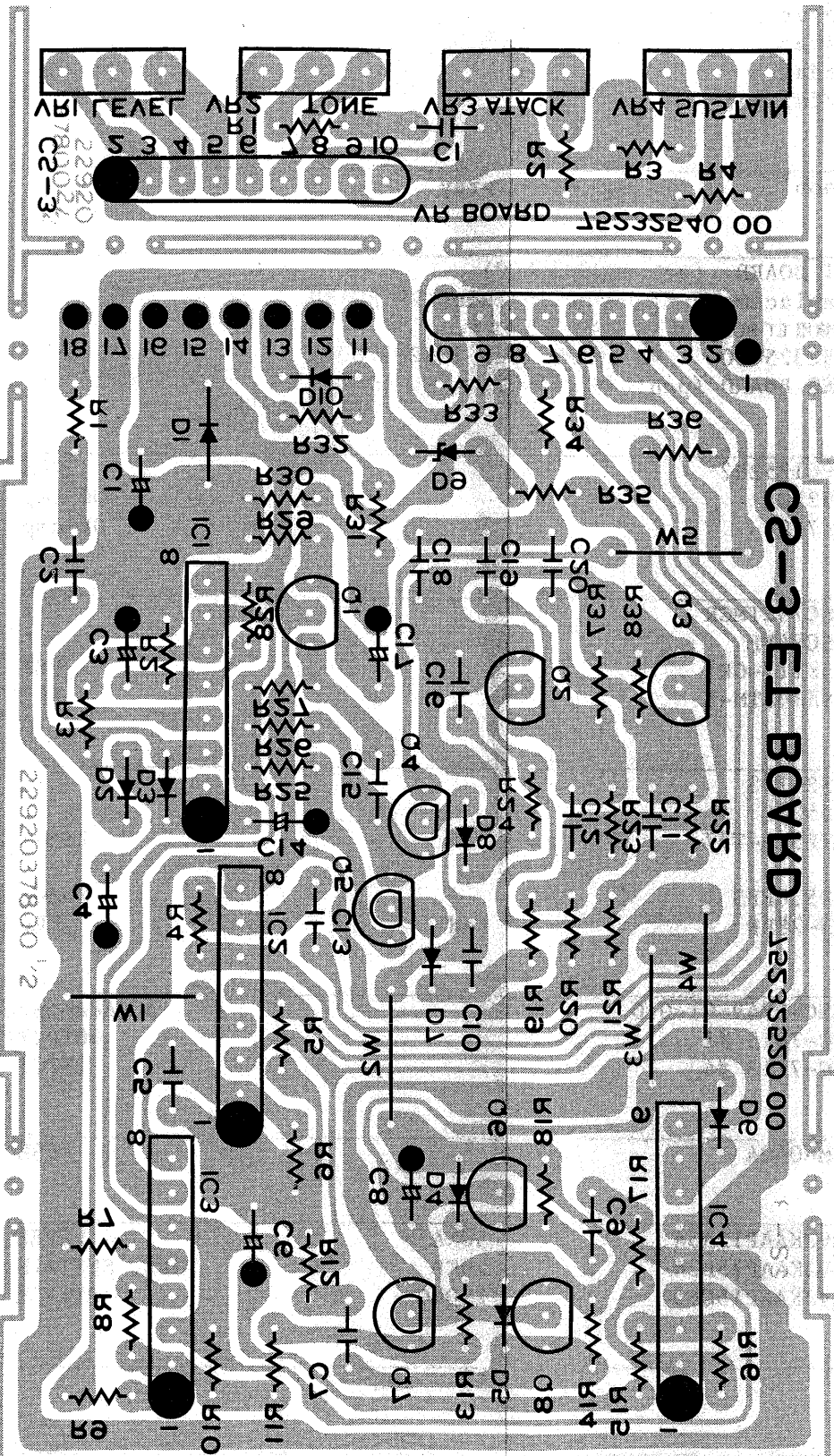
SPECIFICATIONS

Power Source	: 9V Battery or AC Adaptor (BOSS ACA-100, 120, 220 or 240)
Current Draw	: 10mA (@9V DC)
Switches	: Effect On/Off
Jacks	: Input, Output, AC Adaptor
Indicator	: Effect On/Off (Battery Check)
Equivalent Input Noise	: -110dBm (IHF-A)
Input Impedance	: 1MΩ
Output Load Impedance	: Over 10KΩ
Demensions	: 70 (W) x 125 (D) x 55 (H) mm 2-3/4 (W) x 4-15/16 (D) x 2-3/16 (H) in.
Weight	: 400 g/14 oz.



PARTS LIST

CASING			
2201019800	Case		
2221051900	Panel		
2202011600	Cover		
2235030500	Base		
2218054600	Pedal		
2235030400	Pedal mat		
KNOB			
2247038600	Knob	gray	
PCB ASSY			
7523252000	ET BOARD (pcb 2292037800) Replacement ET BOARD includes VR BOARD. 補修用 ET BOARD は VR BOARD を含みます。 ○ 7523254000 VR BOARD (pcb 2292037800) LED BOARD (pcb 2291049600) → CS-3用 LED BOARD → CE-3用 LED BOARDも 75222520 修理可能のコレ CE-3 LED BOARD 75222520		
IC			
15219124	μPC1252H2		VCA
15189136	M5218L		OP amp
15189187	BA718		OP amp
TRANSISTOR			
15129104	2SC732TMGR		
15129108	2SC945P		
15139106	2SK117-GR		FET
15139101	2SK30ATM-Y		FET
DIODE			
15019125	1SS-133		
15019209T0	S5500G		
15019405	MTZ5.6-T77		Zener
or			
15019526	RD5.6EB3		Zener
150129198	LN-28RP	red	Zener LED
15029198			
JACK			
13449704	HEC-0749-01-010		AC Adaptor
13449105	SG-7615 #1		OUTPUT
13449104	SG-7713 #4		INPUT
SWITCH			
13129710	JM-0404		PUSH
POTENTIOMETER			
13279812	EVJKAAP15A54	50KA	LEVEL
13279811	EVJKAAP15B24	20KB	TONE, SUSTAIN
13279788	EVJKAAP15CF5	250KC	ATTACK
FLAT CABLE			
2347019800		9P 40L	
MISCELLANEOUS			
2226033300	Cushion		
2217010900	Coil Spring		
2341041400	Battery Snap		
2215070201	Guide Bushing		
2216052900	Plastic sheet (clear)		
40125101	Thumb Screw		



ET BOARD

SOLDER SIDE

7523252000 (pcb 2292037800)

Replacement ET BOARD includes VR BOARD

補修用 ET BOARD は VR BOARD を含みます。

VR BOARD 7523254000 (pcb 2292037800)

CIRCUIT DIAGRAM

